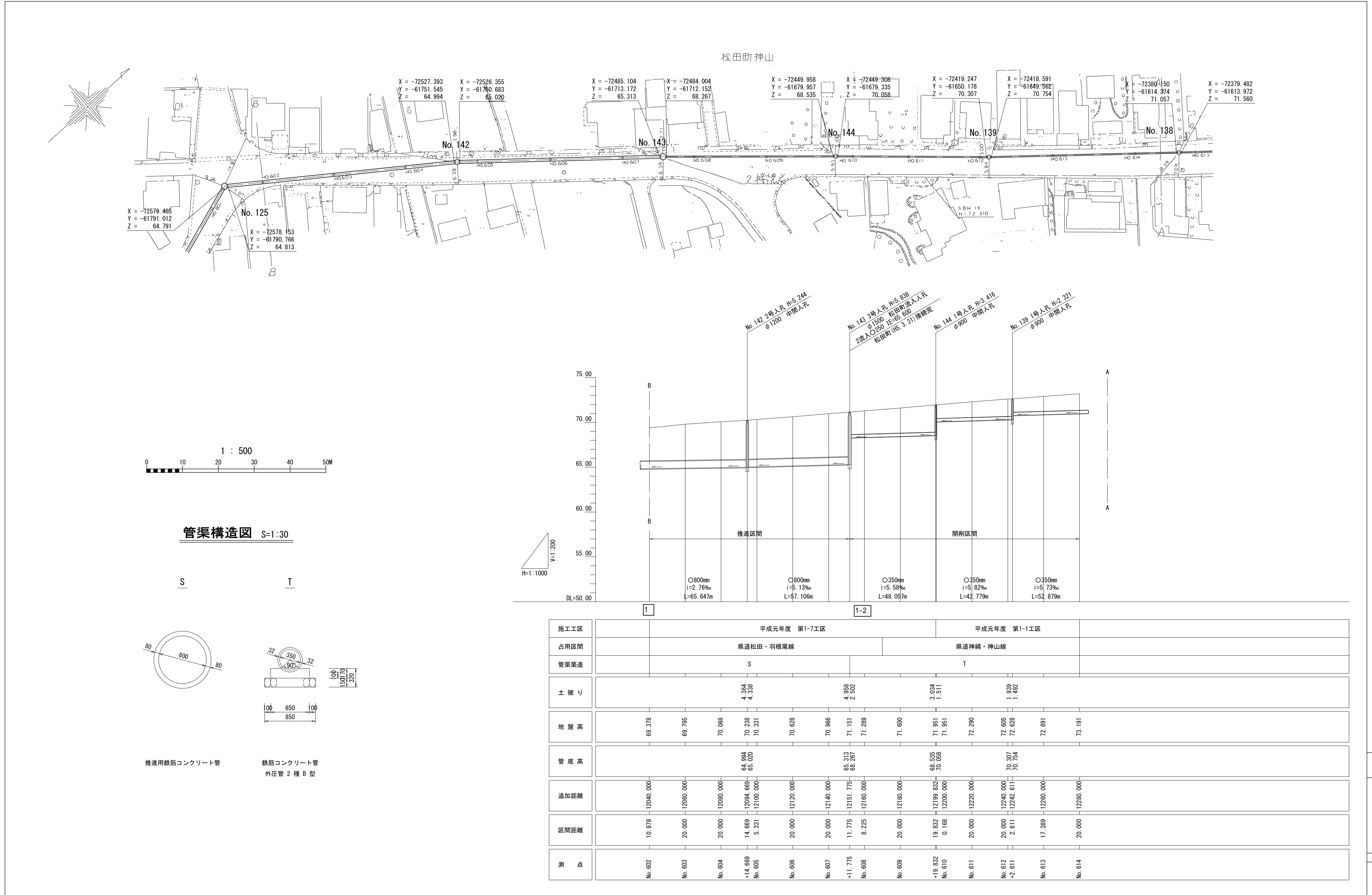


酒匂川流域下水道台帳

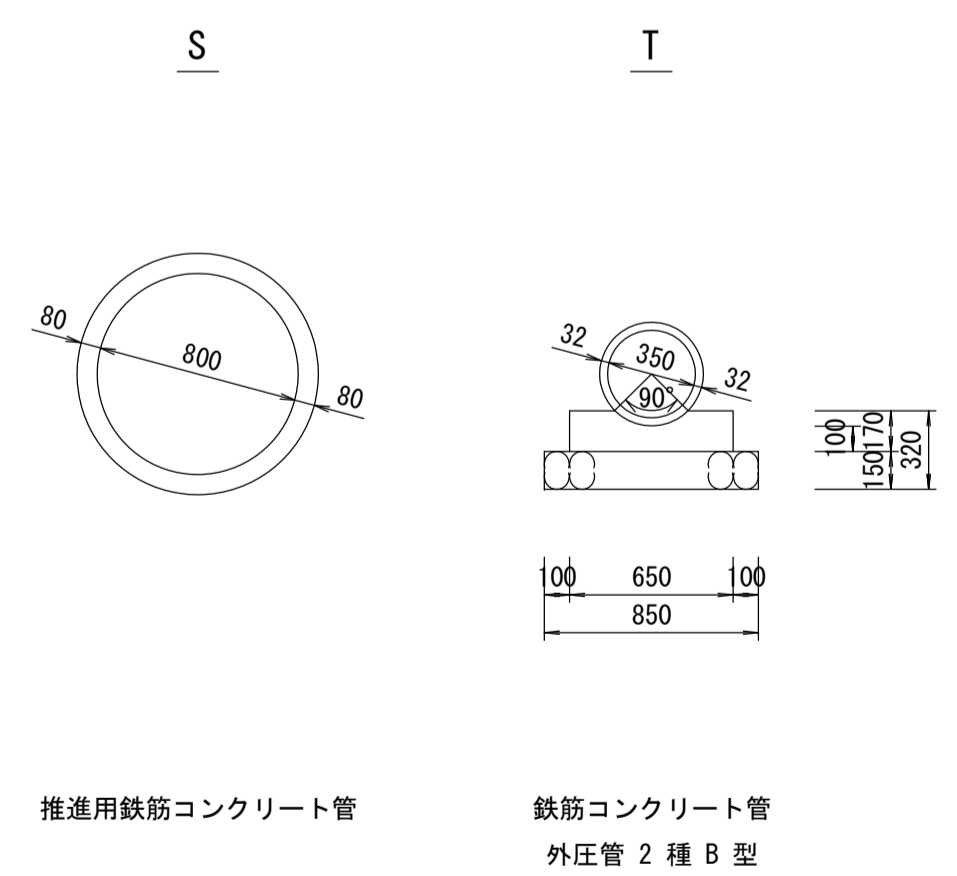
施設平面縦断図

(図面番号 42)

幹線名 左岸幹線



管渠構造図 S=1:30



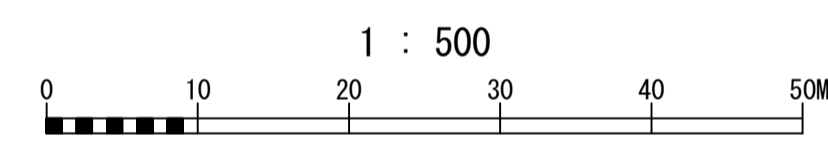
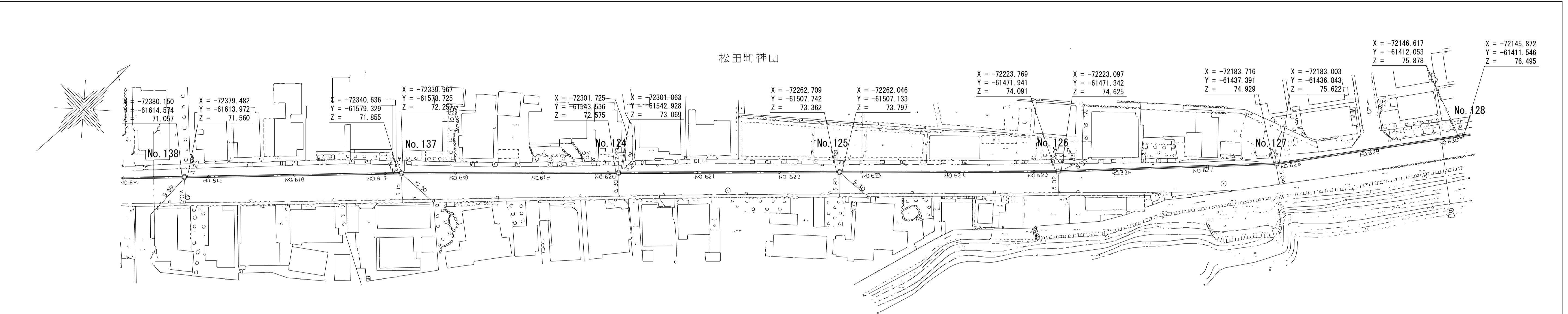
測点	平成元年度 第1-7工区										平成元年度 第1-1工区			
	No. 602	No. 603	No. 604	+1.669 No. 605	No. 606	No. 607	+1.775 No. 608	No. 609	+1.832 No. 610	No. 611	No. 612	+2.611 No. 613	No. 614	
施工区	県道松田・羽根尾線										県道神縄・神山線			
占用区間	S										T			
管渠築造	S										T			
土被り	4.364 4.338										4.958 2.502			
地盤高	69.378	69.795	70.068	70.238 70.331	70.628	70.966	71.151 71.289	71.600	71.951 71.951	72.290	72.605 72.628	72.891	73.191	
管底高	64.894 65.020										65.313 68.267			
追加距離	10.978	12040.000	12060.000	12094.669 12100.000	12120.000	12140.000	12151.775 12160.000	12180.000	12198.832 12200.000	12220.000	12240.000 12242.611	12260.000	12280.000	
区間距離	10.978	20.000	20.000	14.669 5.331	20.000	20.000	11.775 8.225	20.000	19.832 0.168	20.000	20.000 2.611	17.389	20.000	

酒匂川流域下水道台帳

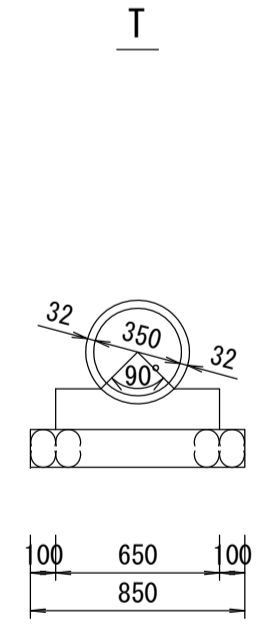
施設平面縦断図

(図面番号 43)

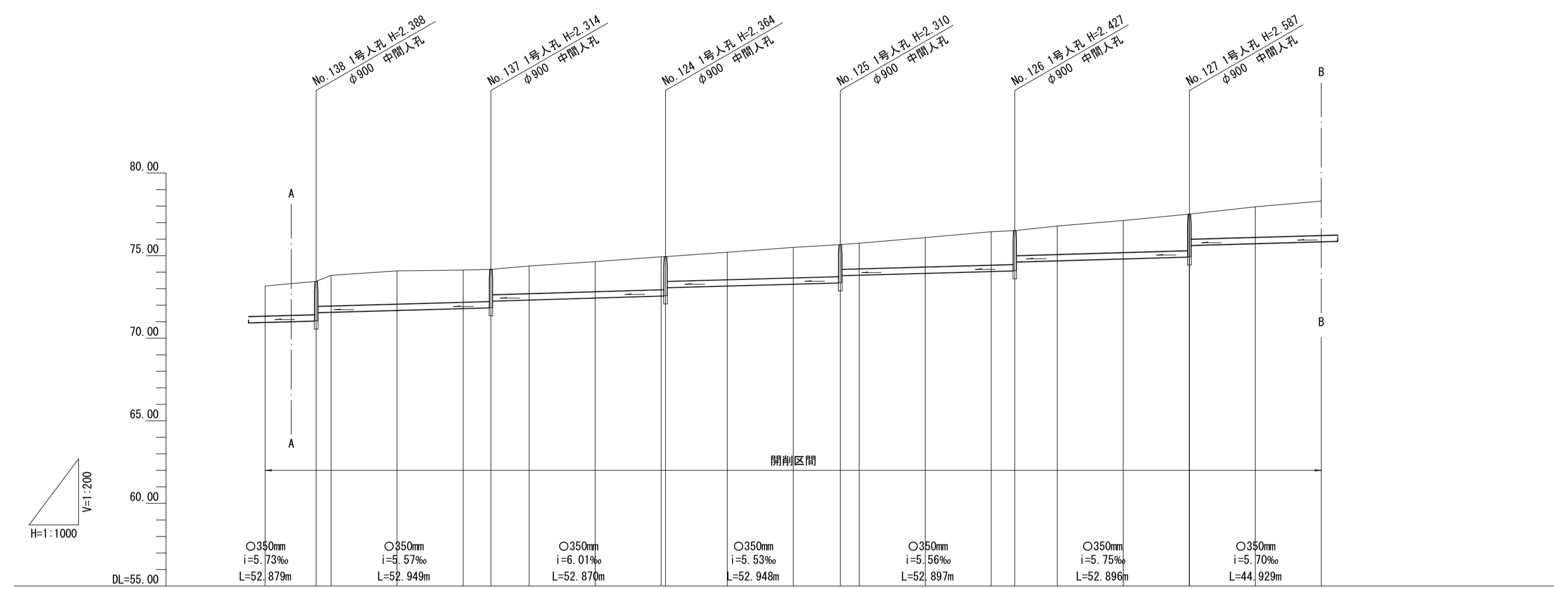
幹線名 左岸幹線



管渠構造図 S=1:30



鉄筋コンクリート管
外圧管 2 種 B 型



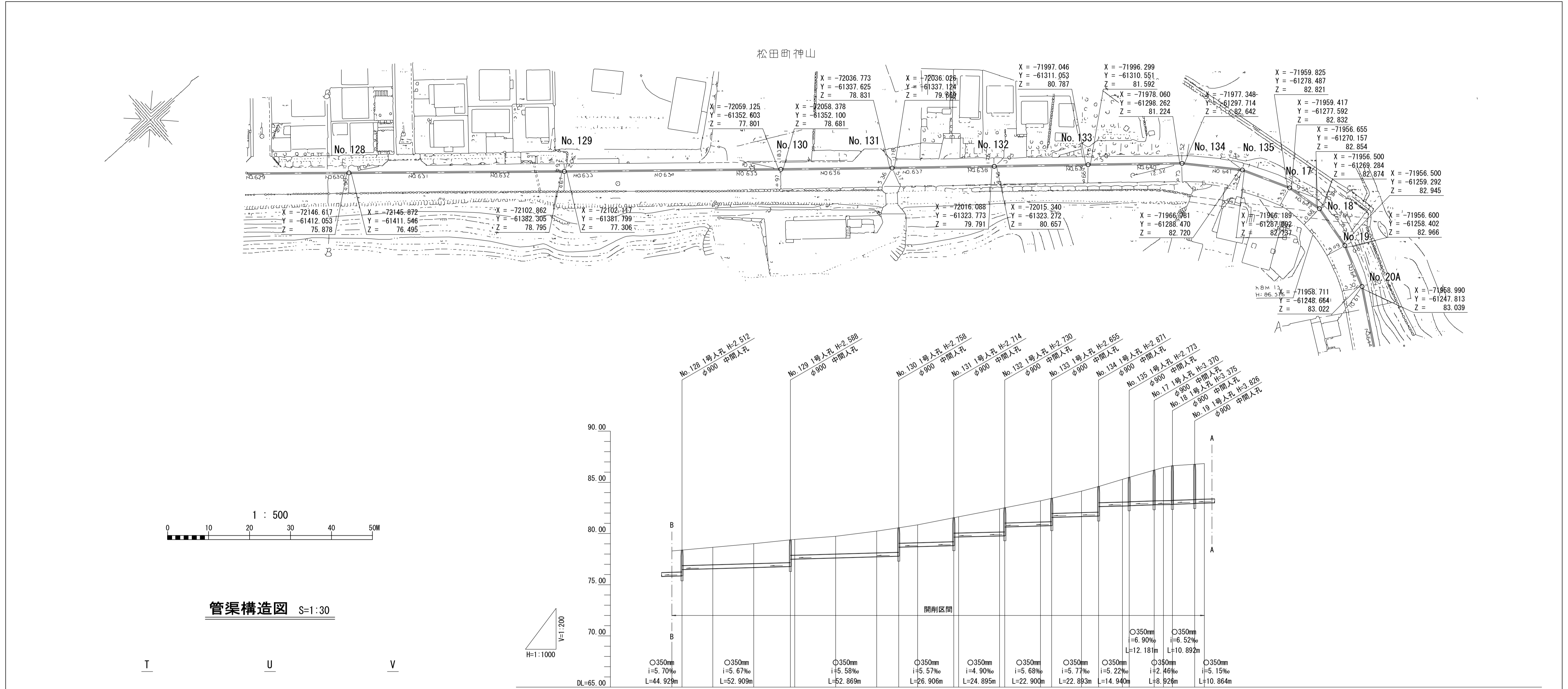
施工工区	平成元年度 第1-1工区																																													
占用区間	県道神縄・神山線																																													
管渠築造	T																																													
土被り		2,006 1,503		1,932 1,530		1,982 1,488		1,928 1,483		2,045 1,511		2,205 1,512		78,298																																
地盤高	73.161	73.445	73.802	74.079	74.123	74.169	74.371	74.636	74.933	74.939	75.204	75.497	75.672	75.755	76.095	76.445	76.518	76.796	77.121	77.516	77.516	77.956	78.298																							
管底高		71.057 71.560		71.855 72.257		72.575 73.069		73.362 73.797		74.091 74.625		74.929 75.622		75.755		76.445		76.518		77.121		77.516		77.956																						
追加距離	20,000	12,280,000	15,400	12,295,400	4,510	12,300,000	20,000	12,320,000	20,000	12,340,000	8,439	12,346,439	11,561	12,360,000	20,000	12,380,000	20,000	12,400,000	1,309	12,401,309	18,691	12,420,000	20,000	12,440,000	14,257	12,454,257	5,743	12,460,000	20,000	12,480,000	20,000	12,500,000	7,154	12,507,154	12,846	12,520,000	20,000	12,540,000	20,000	12,560,000	0,050	12,560,050	19,950	12,580,000	20,000	12,600,000
区間距離	20,000	15,400	4,510	20,000	20,000	8,439	11,561	20,000	20,000	1,309	18,691	20,000	14,257	5,743	20,000	20,000	7,154	12,846	20,000	20,000	0,050	19,950	20,000																							
測点	No. 614	+15.490 No. 615	No. 616	No. 617	+8.439 No. 618	No. 619	No. 620	+1.309 No. 621	No. 622	+14.257 No. 623	No. 624	No. 625	+7.154 No. 626	No. 627	No. 628	+0.050 No. 629	No. 630																													

酒匂川流域下水道台帳

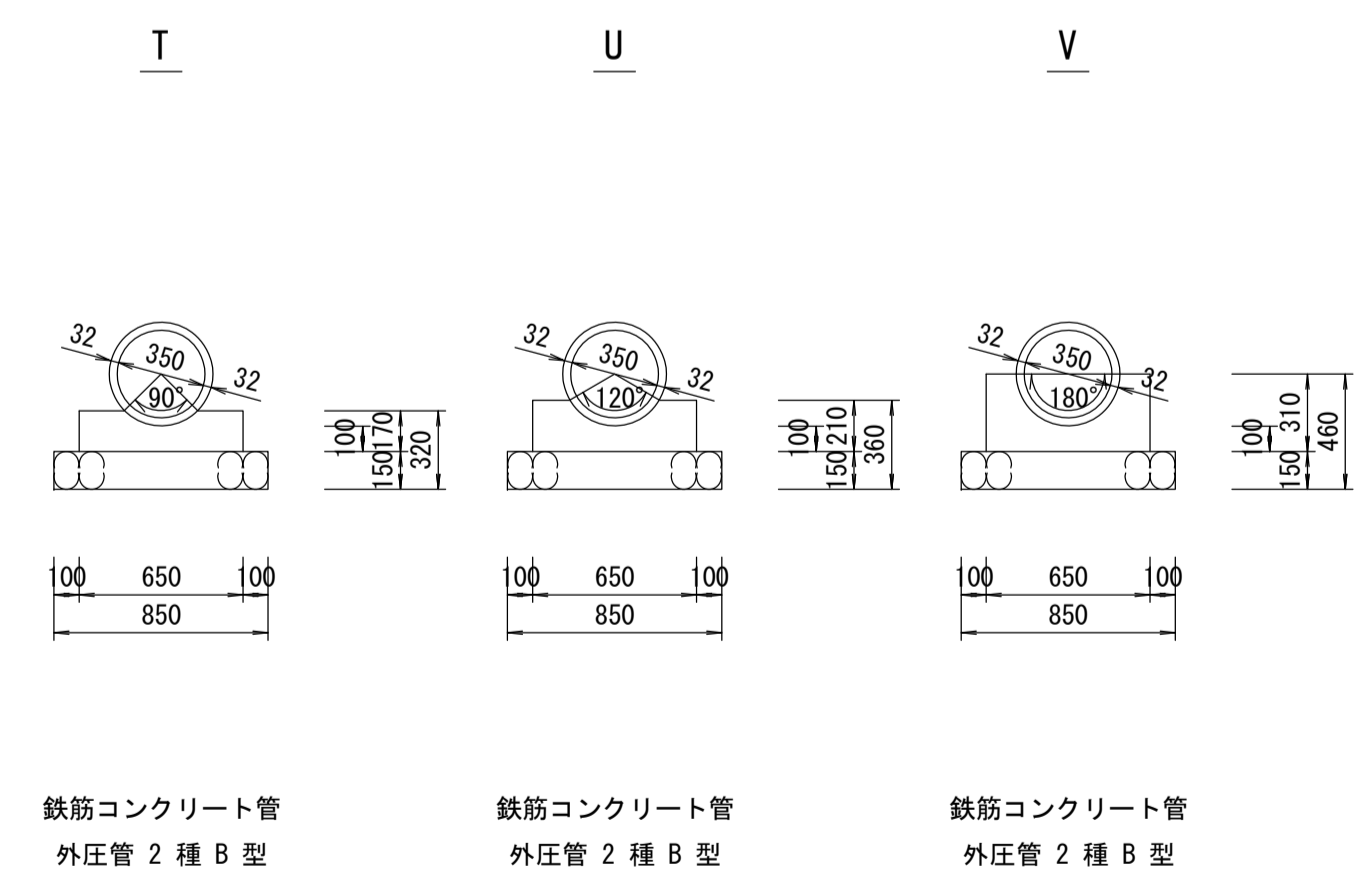
施設平面縦断図

(図面番号 44)

幹線名 左岸幹線



管渠構造図 S=1:30



施工区	平成元年度 第1-1工区																																
	県道神縄・神山線																																
占用区間	T			U			V																										
土被り	2.130	1.513		2.206	1.436		2.376	1.466		2.332	1.484		2.348	1.482		2.273	1.468		2.489	1.571		2.391	2.374		2.988	2.977		3.393	3.373		3.444	3.423	
地盤高	78.288	78.390	78.659	79.017	79.383	79.426	79.734	80.244	80.559	80.851	81.545	81.637	82.410	82.521	83.196	83.442	84.142	84.595	85.288	85.493	86.191	86.454	86.629	86.771	86.836								
管底高	75.878	76.495	76.795	77.506	77.801	78.681	78.831	79.669	79.791	80.657	80.767	81.592	81.724	82.642	82.720	82.832	82.854	82.874	82.874	82.874	82.874	82.874	82.874	82.874	82.874	82.874							
追加距離	0.000	12600.000	12604.979	12620.000	12640.000	12657.888	12660.000	12700.000	12710.757	12720.000	12737.663	12740.000	12760.000	12762.558	12780.000	12785.458	12800.000	12808.351	12820.000	12823.291	12835.472	12840.000	12844.398	12855.290	12860.000								
区間距離	0.000	4.979	15.021	20.000	17.888	2.112	20.000	20.000	10.757	9.243	17.663	2.337	20.000	2.558	17.442	5.458	14.542	8.351	11.649	3.291	12.181	4.528	4.398	10.892	4.710								
測点	No. 630	+4.979	No. 631	No. 632	+17.888	No. 633	No. 634	No. 635	+10.757	No. 636	+17.663	No. 637	No. 638	+2.558	No. 639	+5.458	No. 640	+8.351	No. 641	+3.291	+15.472	No. 642	+4.398	+15.290	No. 643								