

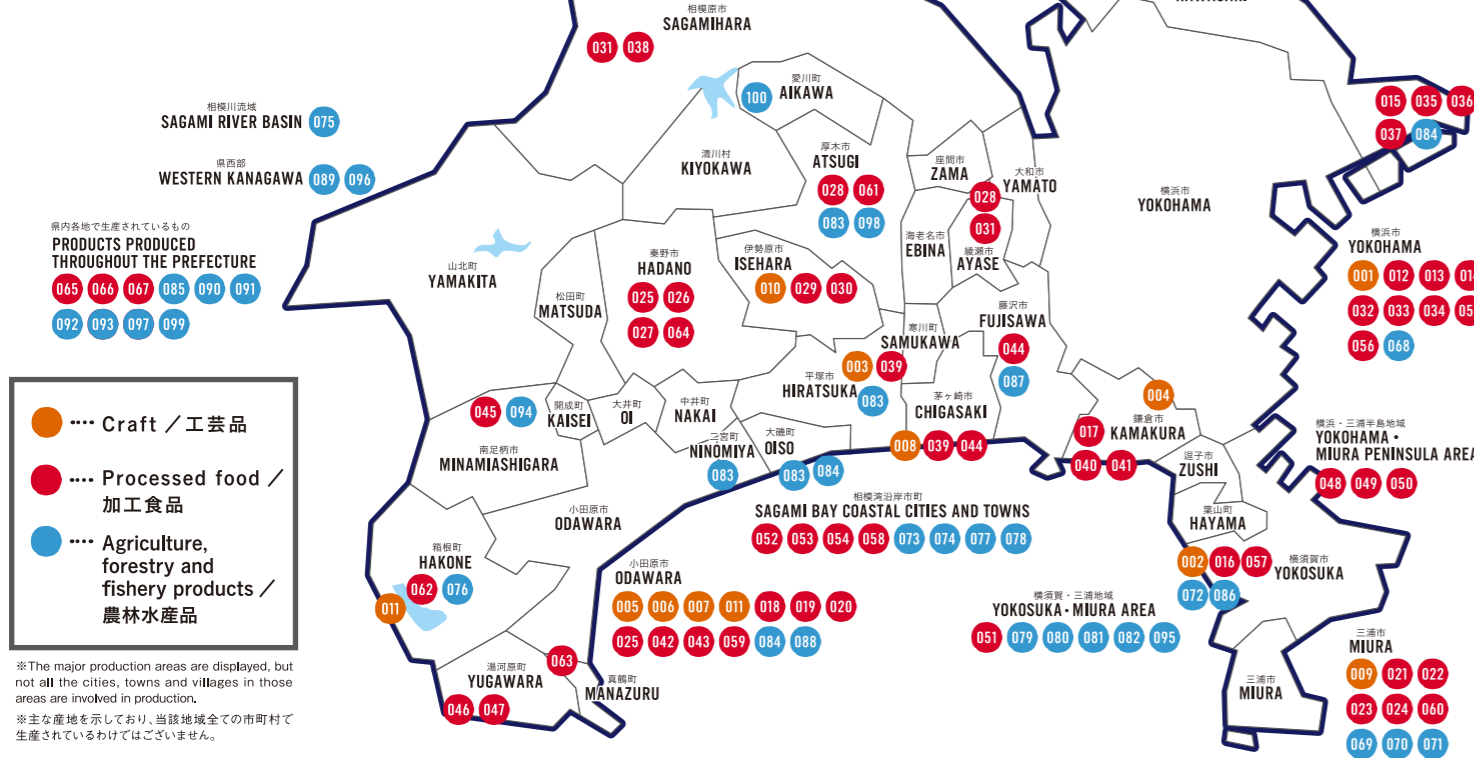
KANAGAWA MAP

Distribution map of Kanagawa
Specialty 100 Selections

かながわの名産100選分布マップ

You can search the specific name of a product here

具体的な産品名は 検索



県内各地で生産されているもの
PRODUCTS PRODUCED THROUGHOUT THE PREFECTURE
065 066 067 085 090 091
092 093 097 099

- Craft / 工芸品
- Processed food / 加工食品
- Agriculture, forestry and fishery products / 農林水産品

※The major production areas are displayed, but not all the cities, towns and villages in those areas are involved in production.
※主な産地を示しており、当該地域全ての市町村で生産されているわけではありません。

Shop to Experience the Appeal of Kanagawa

かながわの魅力を感じるアンテナショップ

Kanagawa antenna shop “Kanagawa-ya” SOGO YOKOHAMA

神奈川県アンテナショップ「かながわ屋」そごう横浜店

It carries over 350 types of famous products and specialty items from Kanagawa Prefecture, including freshly-harvested vegetables and popular famous confectionery brands.
Why don't you discover the new charms of Kanagawa at this fun shop where various fairs and events are held?

- 📍SOGO YOKOHAMA Food section B2F, 2-18-1 Takashima, Nishi-ku, Yokohama-city
- 🚶 Direct connection from Yokohama Station to East Exit Underground Shopping Mall
- 🕒10:00-20:00 ※Operating hours and regular holidays conform to those of SOGO YOKOHAMA ☎045-620-8535

神奈川県の名産品や特産品をはじめ、採れたて野菜や人気の銘菓など350種類以上の品を取り揃えています。フェアやイベントなども開催される楽しいアンテナショップで、新たな神奈川県の魅力を発見してみませんか？

- 📍横浜市西区高島2-18-1 そごう横浜店地下2階食品売場
- 🚶横浜駅から東口地下街直結 🕒10:00~20:00 ※営業時間、定休日はそごう横浜店に準じます ☎045-620-8535



Publisher / Contact Tourism Planning Division, Tourism Department, International Affairs, Culture and Tourism Bureau, Kanagawa Prefectural Government

〒231-8588 1 Nihon-Odori, Naka-ku, Yokohama-city, Kanagawa Prefecture TEL: 045-210-1111

Please be sure to read! ※The information listed is current as of September 2019. Due to changes in details, special holidays, and other circumstances, there may be occasions when certain establishments and facilities are not available, so please confirm in advance before using. ※The images used are for illustrative purposes only. ※The maps shown are rough maps. ※All prices displayed are tax inclusive. ※Please be aware in advance that there are facilities and stores with prices that are different from those displayed here due to revisions in the Consumption Tax Law.

必ずお読みください。 ※掲載されている情報は令和元年9月現在のものです。内容の変更や臨時休業などをご利用できない場合もございますので、予めご利用になる際にご確認ください。 ※掲載されている画像はイメージです。 ※掲載されている地図は簡図です。 ※表示価格はすべて税込価格です。 ※消費税改正により金額が掲載の価格と異なる施設、店舗がございます。予めご了承ください。

発行年月 2019.9
発行元・お問合せ先



KANAGAWA SPECIALTY 100

You can meet in KANAGAWA SELECTIONS



KANAGAWA SPECIALTY 100 You can meet in KANAGAWA SELECTIONS

Created from the traditional culture and natural features of Kanagawa Prefecture, the "Kanagawa Specialty 100 Selections" represent 100 specially selected items determined based on recommendations from residents and various groups of the prefecture. We strongly encourage you to visit Kanagawa Prefecture and enjoy some of the 100 specially selected items, including "Odawara Paper Lanterns" which were essential items for travelers crossing the mountains of Hakone during the Edo period, "Kawasaki Daishi Candy" which is fun to watch and listen to rhythmic chopping of candies, and the extremely fresh "Misaki Tuna," which boasts some of the largest catches in Japan.

神奈川県伝統と風土が生み出した「かながわの名産100選」は、県民や各団体等からの推薦を受けて決定した選りすぐりの100の品々です。江戸時代、箱根の山越えをする旅人の必需品だった「小田原提灯(ちょうちん)」、リズムカルな鉛切りの音が楽しい「川崎大師の飴」、全国有数の水揚げ量を誇る鮮度抜群の「三崎のまぐろ」など、100の素敵な体験をしに神奈川県へ出かけませんか？

Odawara Paper Lanterns

小田原提灯(ちょうちん)

Odawara Paper Lantern-Making Experience

小田原ちょうちん製作体験



The Odawara Paper Lantern is a traditional handicraft which was very popular among travelers of the Edo period, with the special characteristic of foldability. With this hands-on experience, you make your own original paper lantern by drawing your favorite pictures or letters on Japanese paper and then attaching the paper to a frame made from thin strips of bamboo. Many tourists from overseas try their hand at making these.

📍 3-6-23 Honcho, Odawara-city (Odawara Juku Nariwai Rest House)
 🚶 Approx. 15 mins walk from Odawara Station
 🕒 10:00-19:00 (Nov.-March:-18:00) Held on 2nd and 4th Sunday of each month.
 🎫 Lantern-Making Experience: 1,000 yen/person (Approx. 90 mins.)
 ☎️ 0465-22-5002 (Odawara tourist association)

小田原提灯(ちょうちん)は折り畳み可能な蛇腹型が特徴で、江戸時代の旅人に大人気だった伝統工芸品です。こちらの体験では、和紙に好きな絵や文字を書き、竹ひごで作った骨組みに張り付けてオリジナルの提灯(ちょうちん)を製作。海外からの観光客も多く体験しています。

📍 小田原市本町3-6-23 (小田原宿なりわい交流館) 🚶 小田原駅から徒歩約15分
 🕒 10:00~19:00 (11月~3月 ~18:00) 毎月第2・4日曜日開催
 🎫 体験料/一人1,000円(約90分) ☎️ 0465-22-5002 (小田原市観光協会)

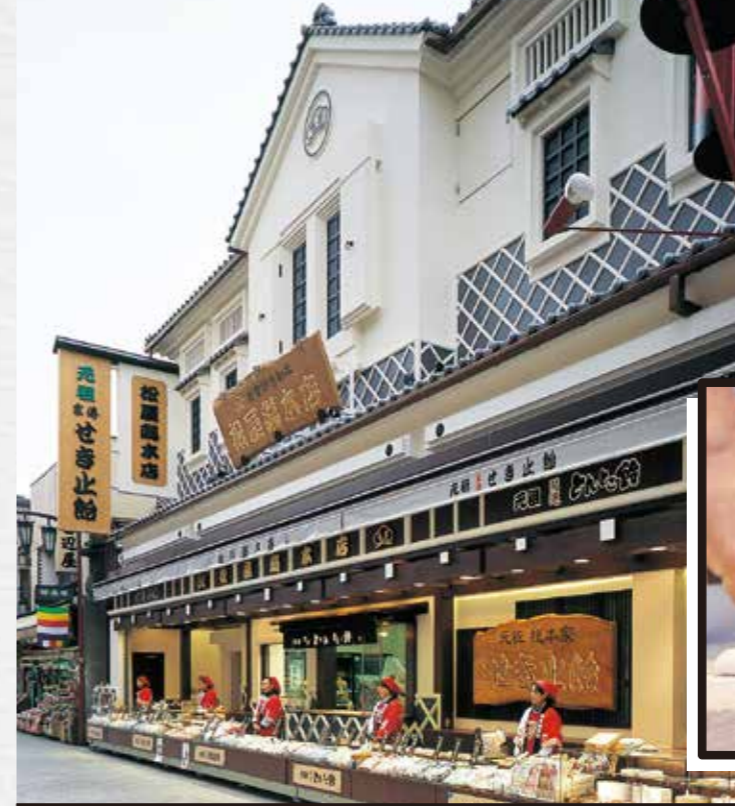
Kawasaki Daishi Candy

川崎大師の飴



Matsuya SOUHONTEN

松屋総本店



Matsuya SOUHONTEN is a confectionery shop with a long standing history, even among the other old shops in the Kawasaki Daishi Nakamise-dori shopping street. Chopping nimbly and rhythmically, the craftsmen cut strands of candy into small pieces one after the other. Plump and pliable like soft candy, freshly-made "tontoko" candy is highly recommended as a souvenir.

📍 4-39 Daishimachi, Kawasaki-ku, Kawasaki-city 🚶 Approx. 8 mins walk from Kawasaki Daishi Station
 🕒 9:00-17:00 No holidays ☎️ 044-277-7711

松屋総本店は川崎大師仲見世通りの中でも老舗の飴屋さんです。職人さんがトントンと軽快なリズムを刻みながら次々に飴を切っていく実演販売を行っています。ソフトキャンディーのようにふっくら柔らかい出来立てのどんとこ飴はお土産におすすめ。

📍 川崎市川崎区大師町4-39 🚶 川崎大師駅から徒歩約8分
 🕒 9:00~17:00 無休 ☎️ 044-277-7711

Misaki Tuna

三崎のまぐろ



Visiting the Fish Market

魚市場見学



At the Miura City Low-Temperature Wholesale Market, you can see rows and rows of frozen tuna lined up on the second floor being auctioned off on the days the auctions are held. It is recommended you head off early to the auctions as they sometimes end at around 9:45 in the morning. You can also see marine products other than tuna being bought and sold at an adjoining market. (Viewing of transactions of products other than tuna is suspended until the end of November 2019 due to renovations.)

📍 5-245-7 Misaki, Miura-city
 🚶 Approx. 15 mins by bus from Misakiguchi Station and 5 mins walk from "Misakiko" bus stop
 🕒 Viewing hours: around 8:00-10:00 No regular holidays
 ☎️ 046-882-1111 (Public Market Management Office, Economic Department, Miura city)

三浦市低温卸売市場では、取引日に市場の2階からずらりと並んだ冷凍マグロの入札の様子を見学することができます。朝9:45頃には入札が終わってしまう日もあるので早めのお出かけがおすすめ。隣接の市場ではマグロ以外の海産物の取引の見学もできます。(改修工事により、マグロ以外の取引の見学は2019年11月末まで中止しています。)

📍 三浦市三崎5-245-7 🚶 三崎口駅からバス約15分「三崎港」下車徒歩約5分
 🕒 [見学可能時間] 8:00~10:00 不定休
 ☎️ 046-882-1111 (三浦市経済部市場管理事務所)