

(湖 沼)

図-5 湖沼の水質汚濁状況

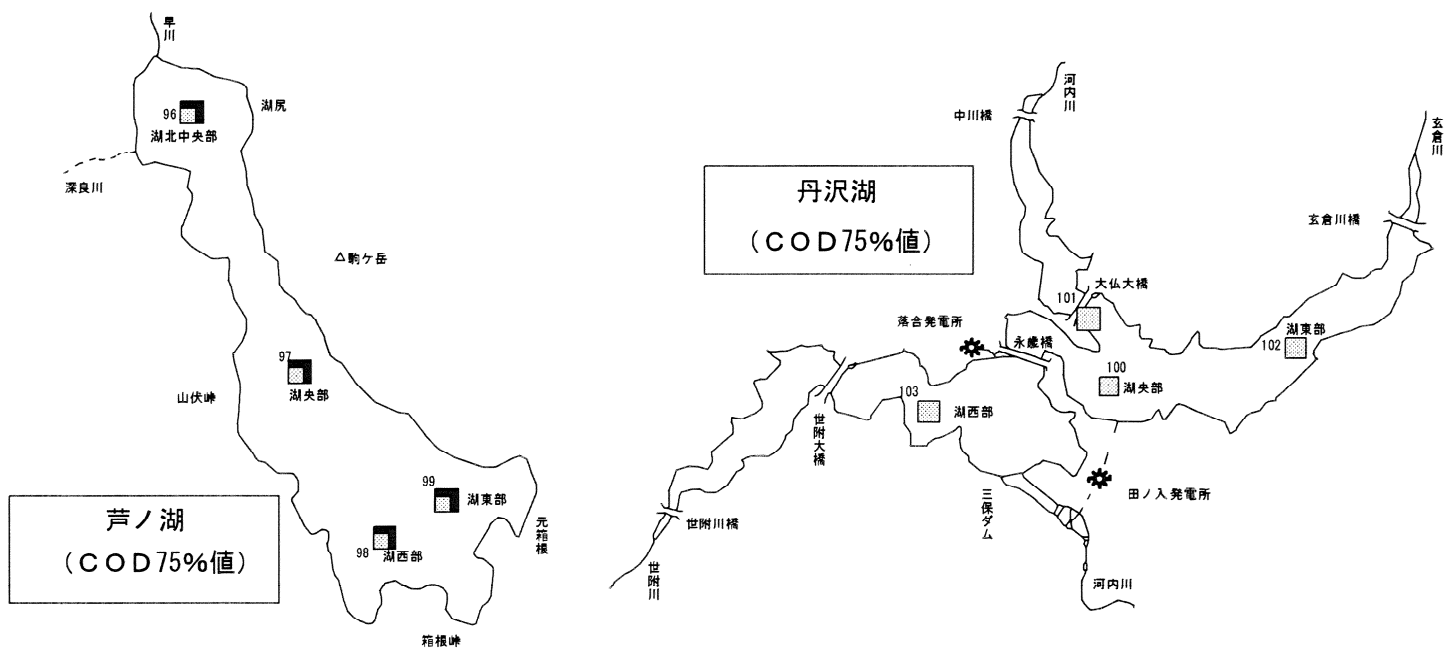
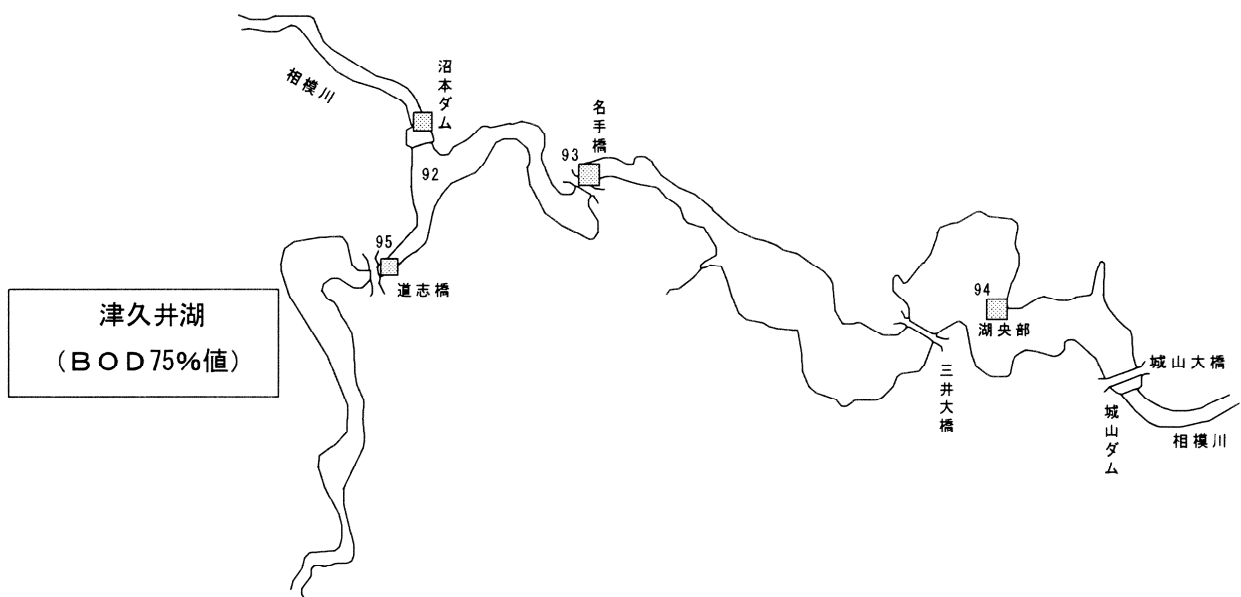
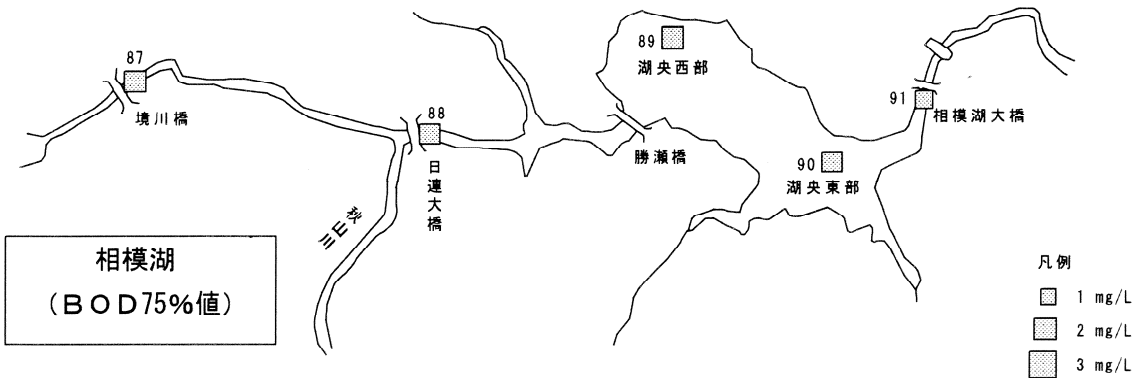


図-6 湖沼における年平均値の推移(全測定地点の平均値)  
(BOD・COD・透明度・pH・全窒素・全磷)

図6-1 相模湖

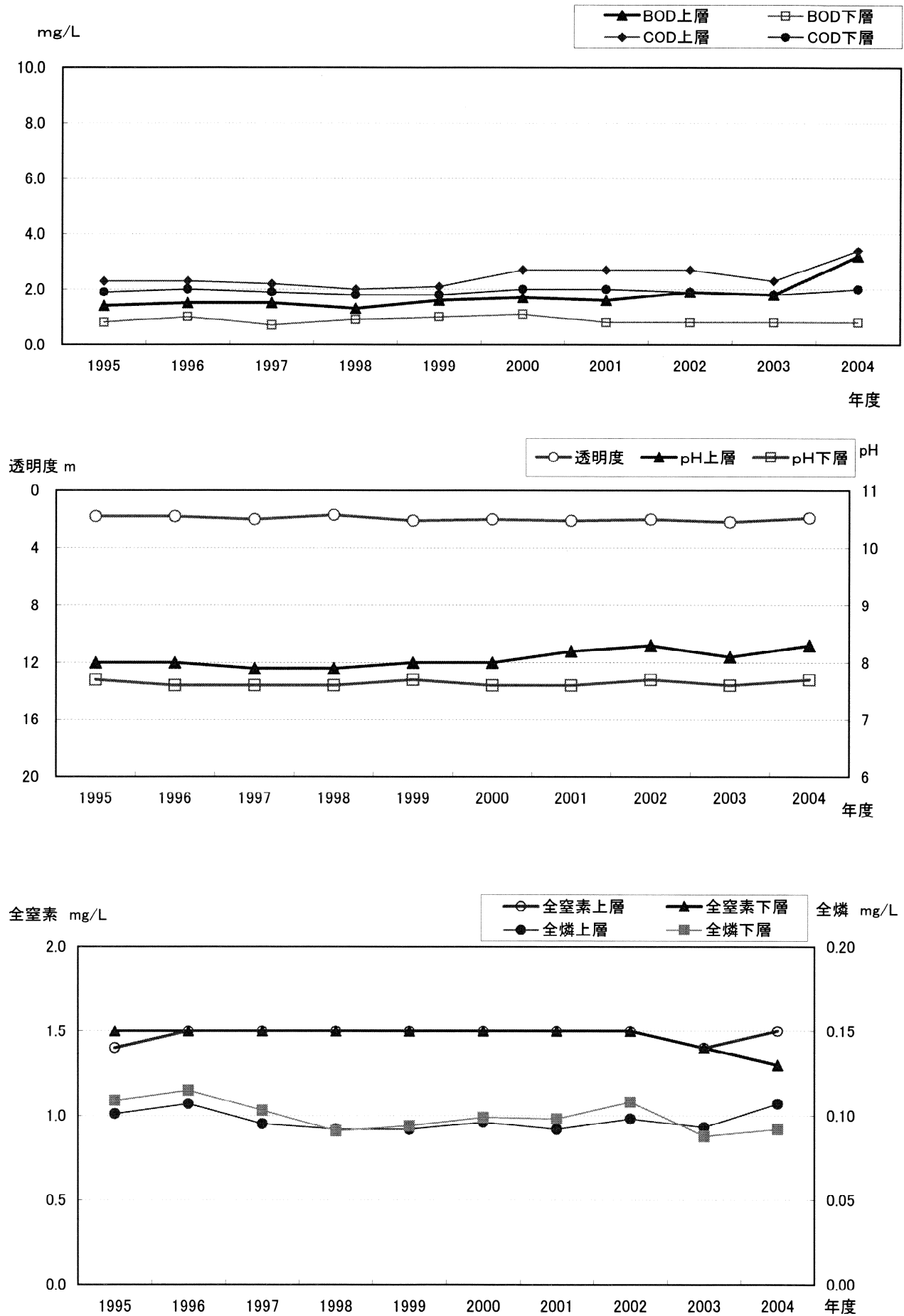


図6-2 津久井湖

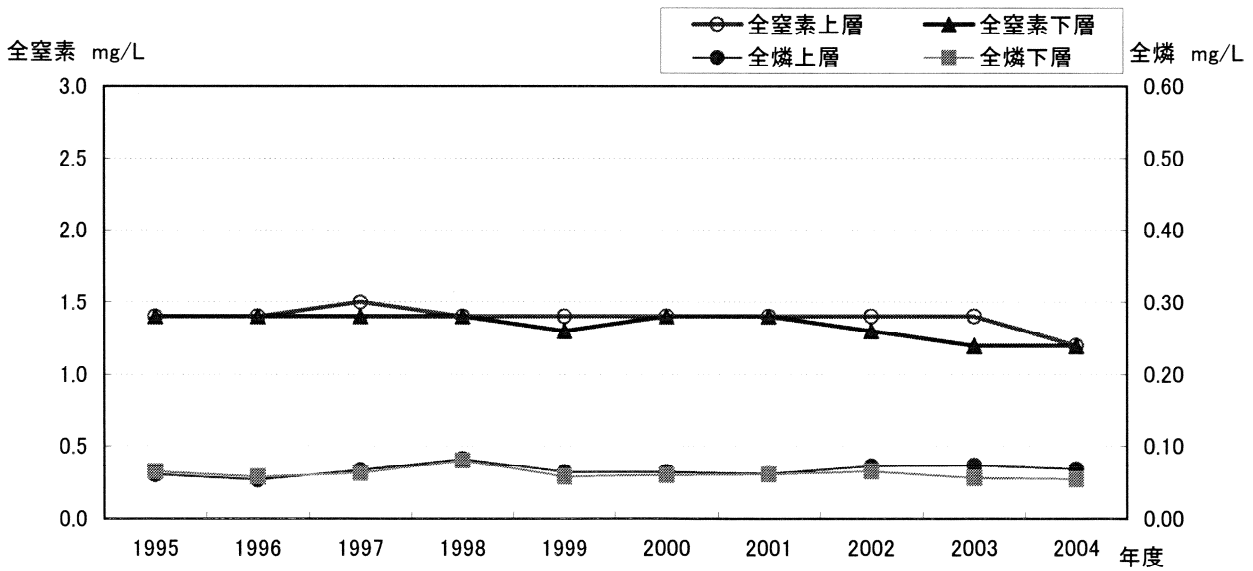
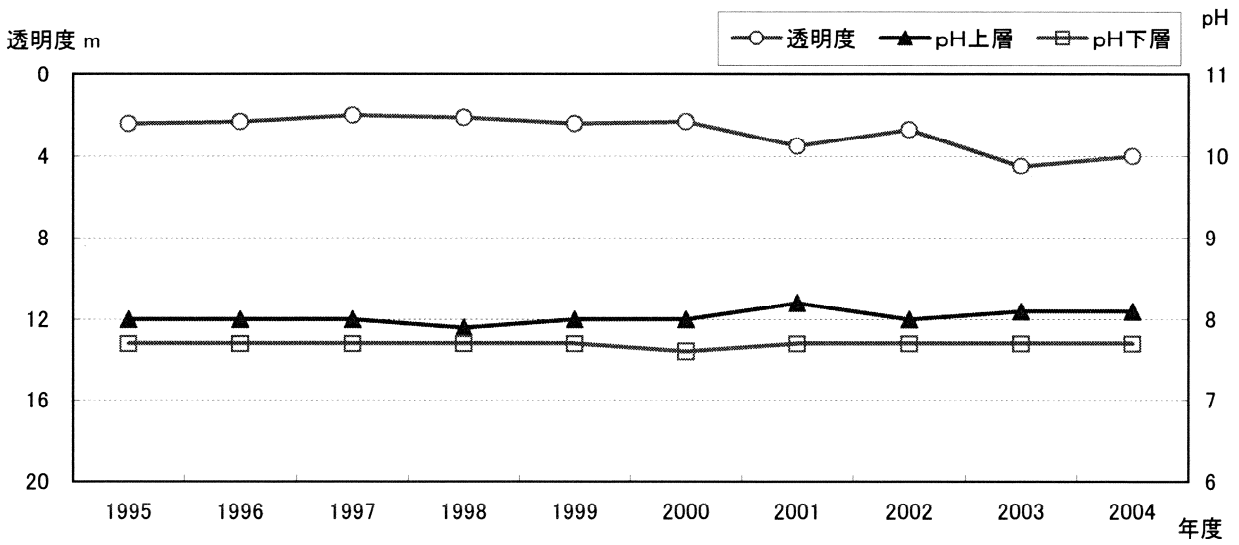
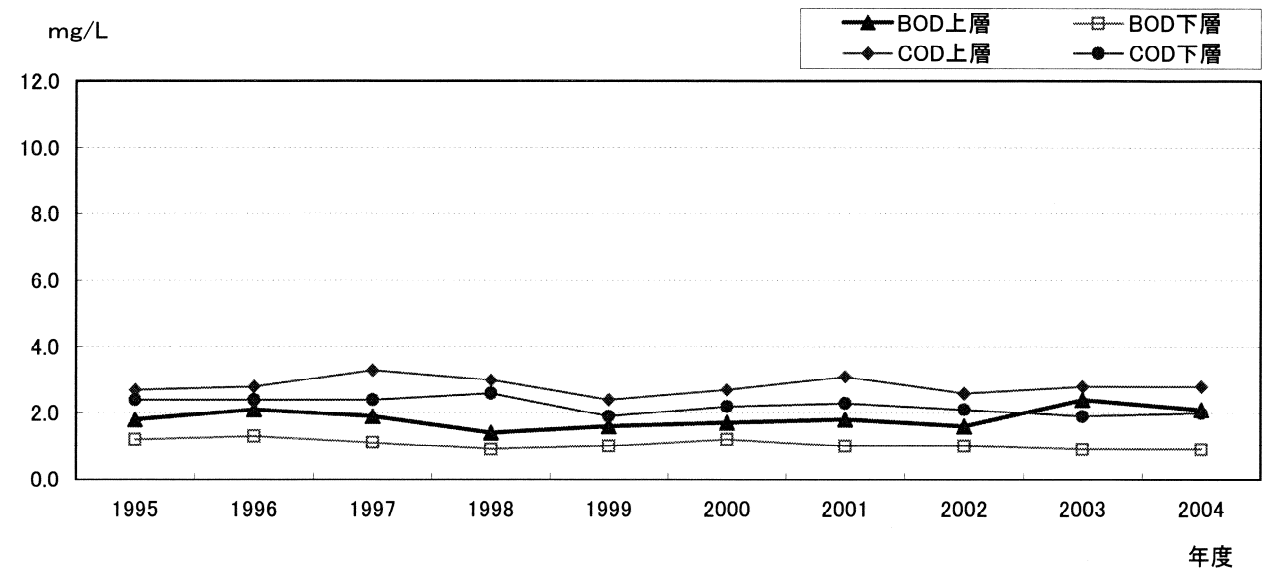


図6-3 芦ノ湖

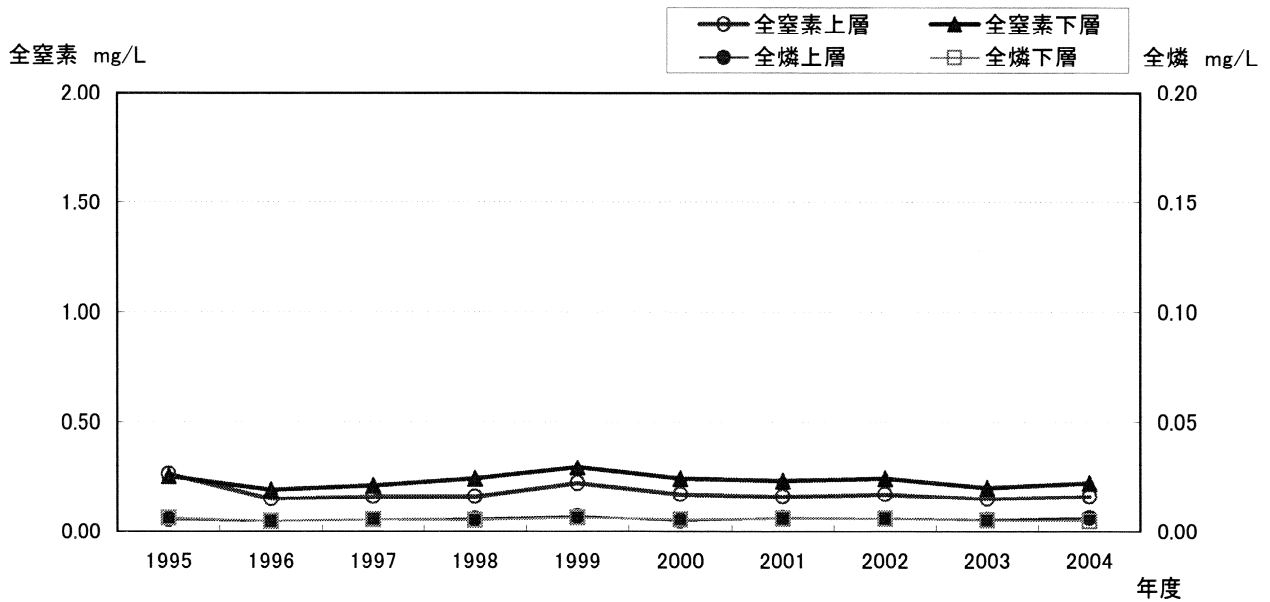
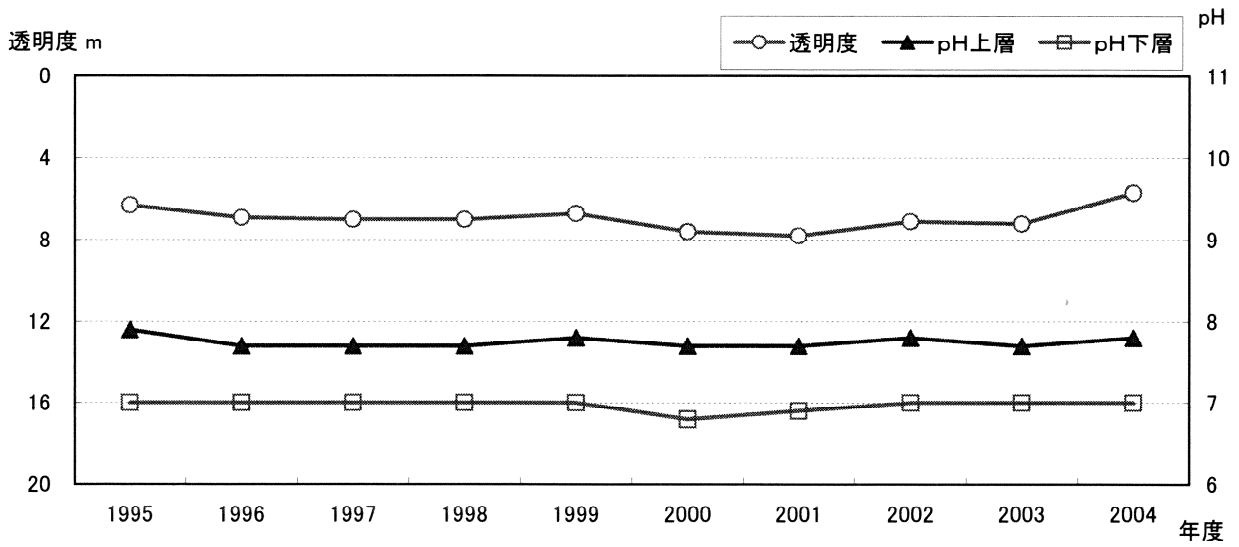
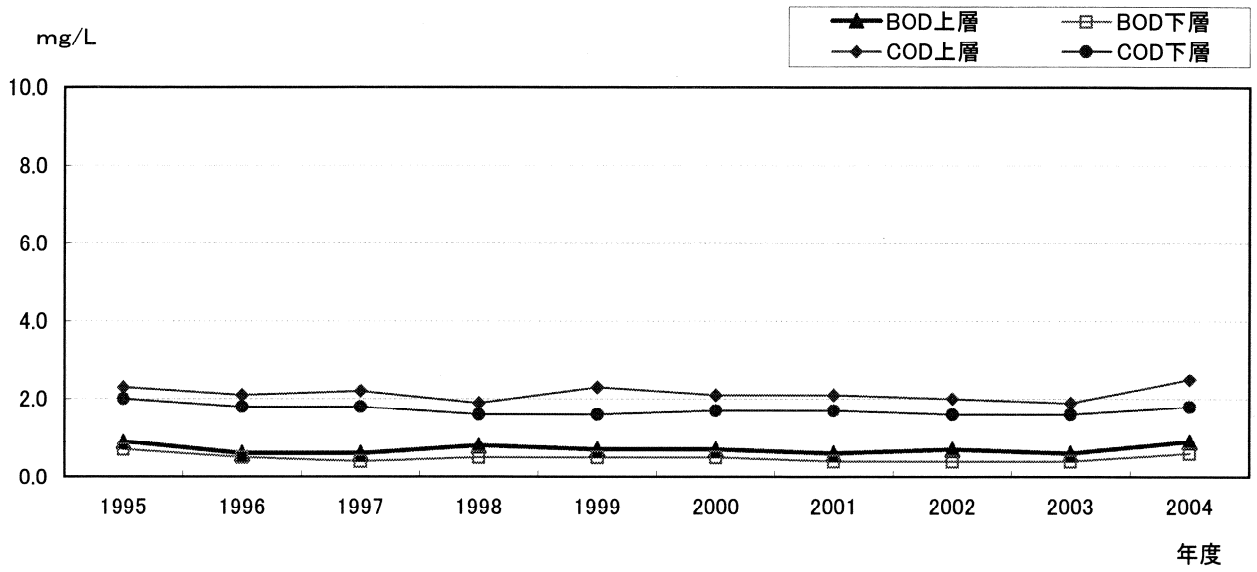
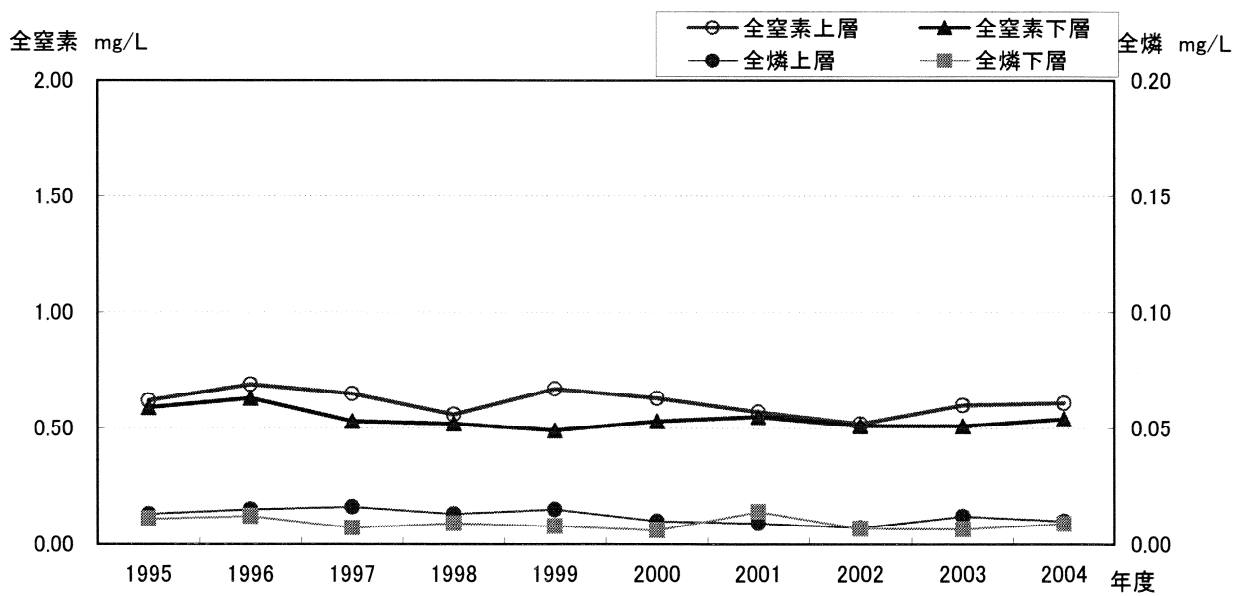
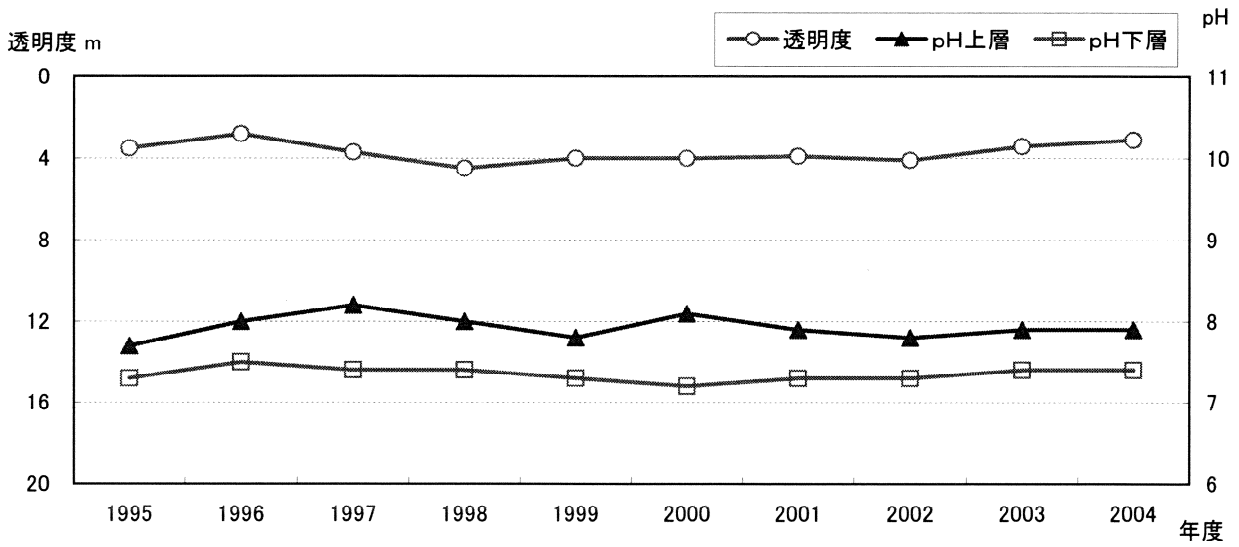
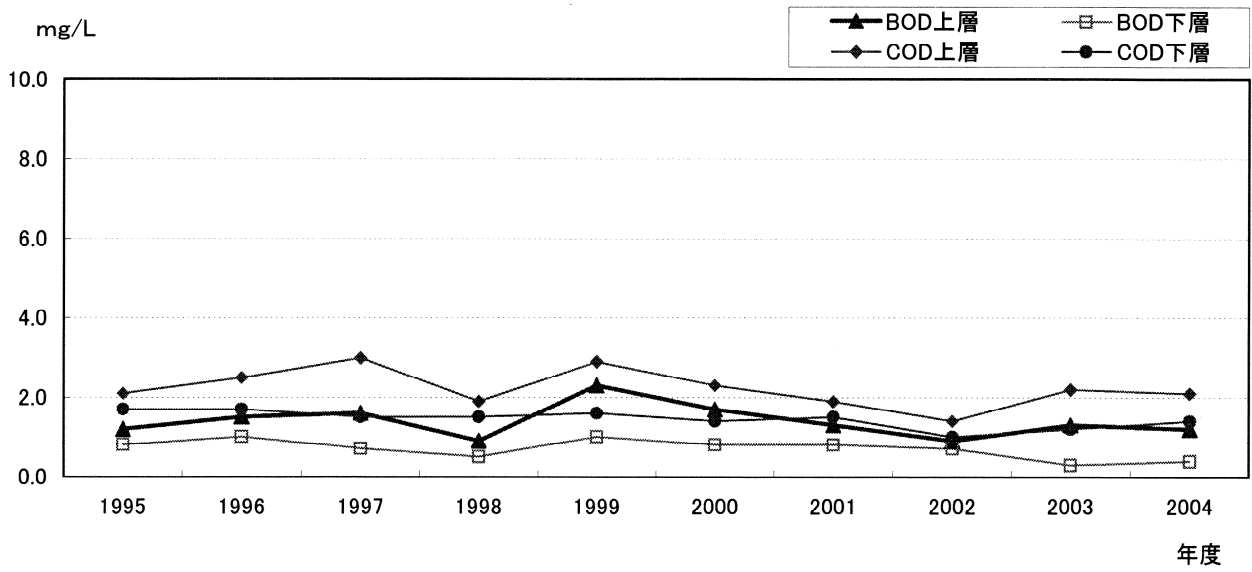


图6-4 丹沢湖



図一七 湖沼の主要地点における年平均値の推移  
(BOD・COD・透明度・pH・全窒素・全磷)

図7-1 相模湖(湖中央東部)

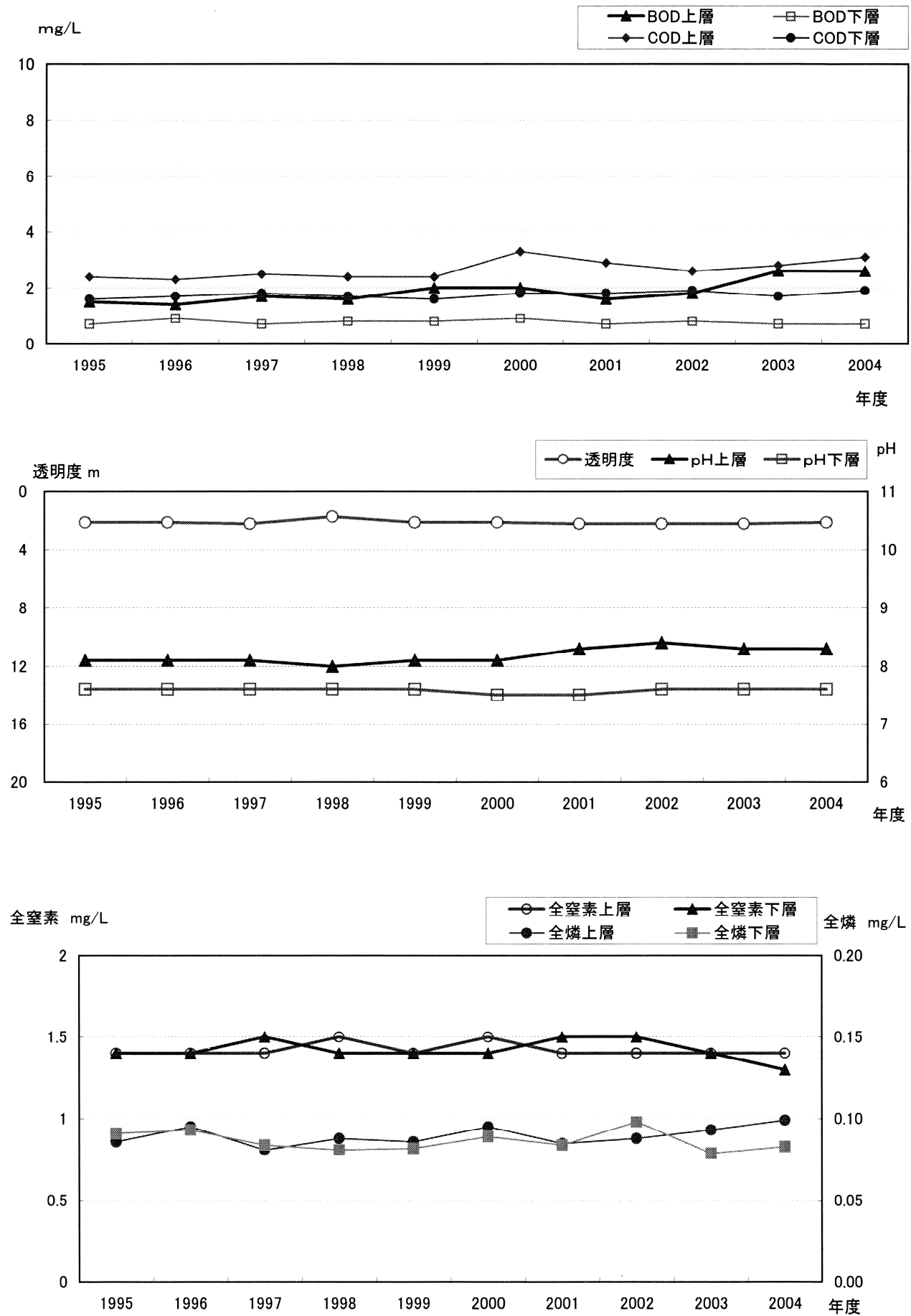


图7-2 津久井湖(湖央部)

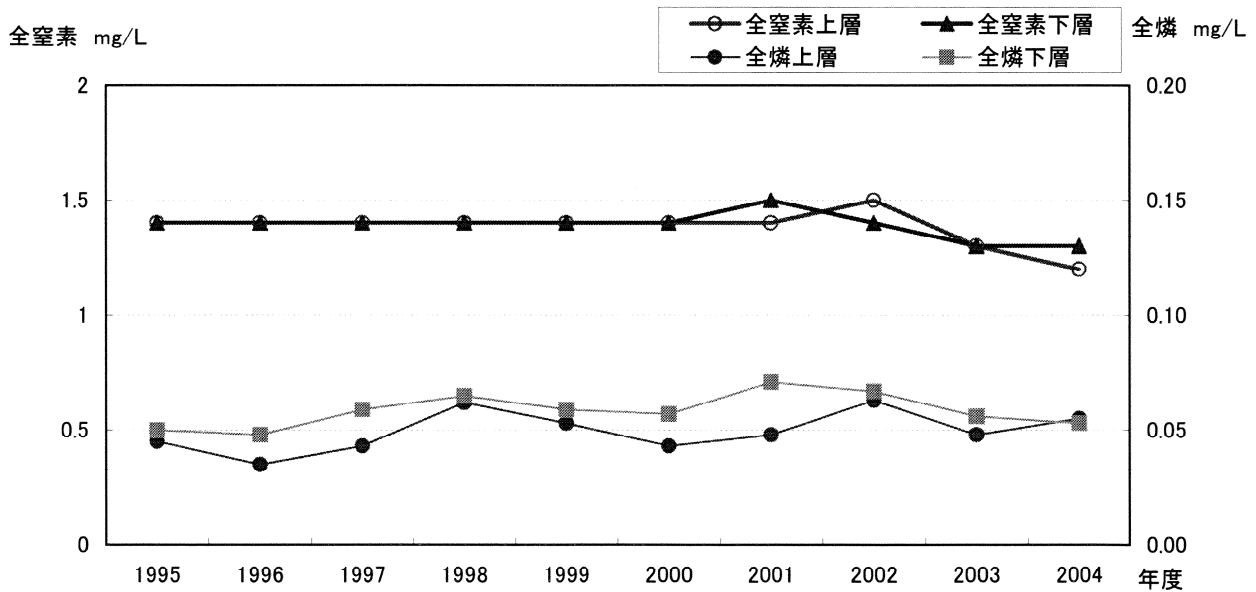
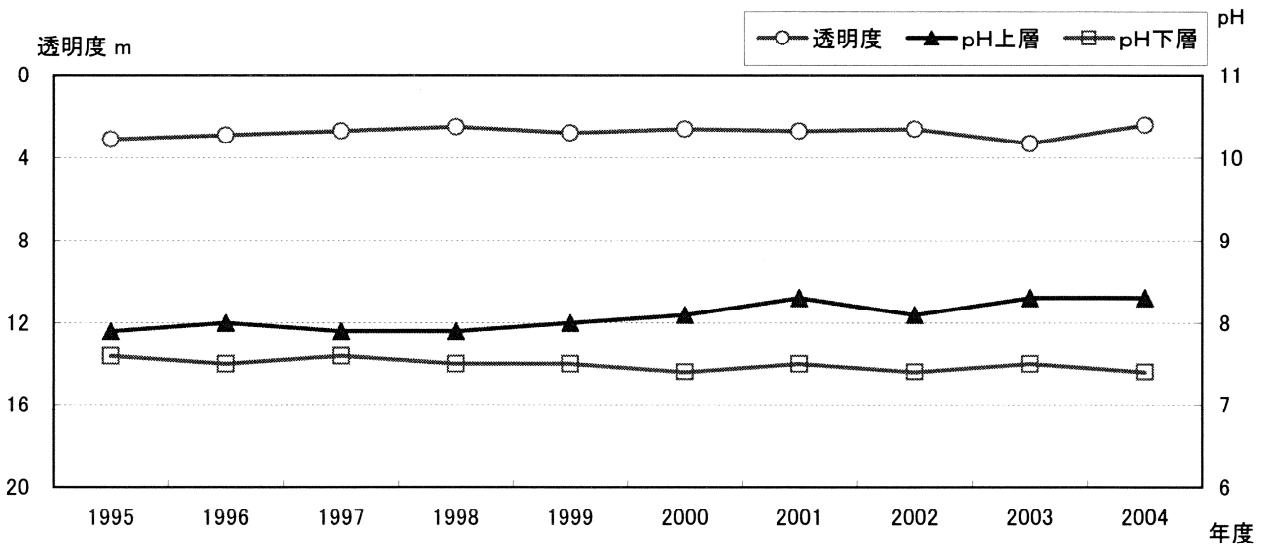
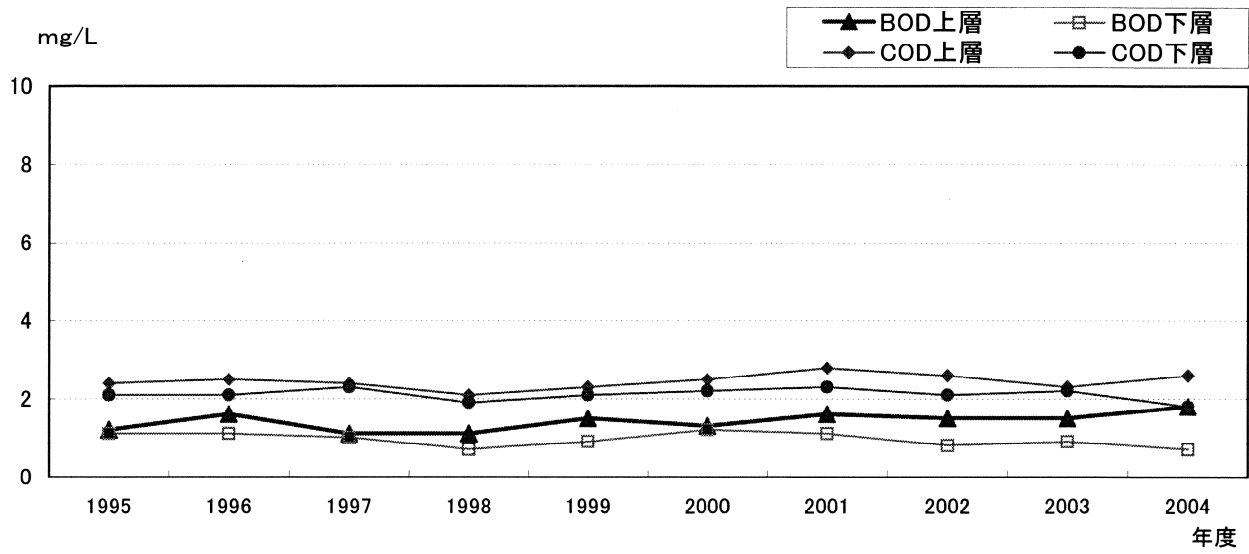




图7-3 芦ノ湖(湖央部)

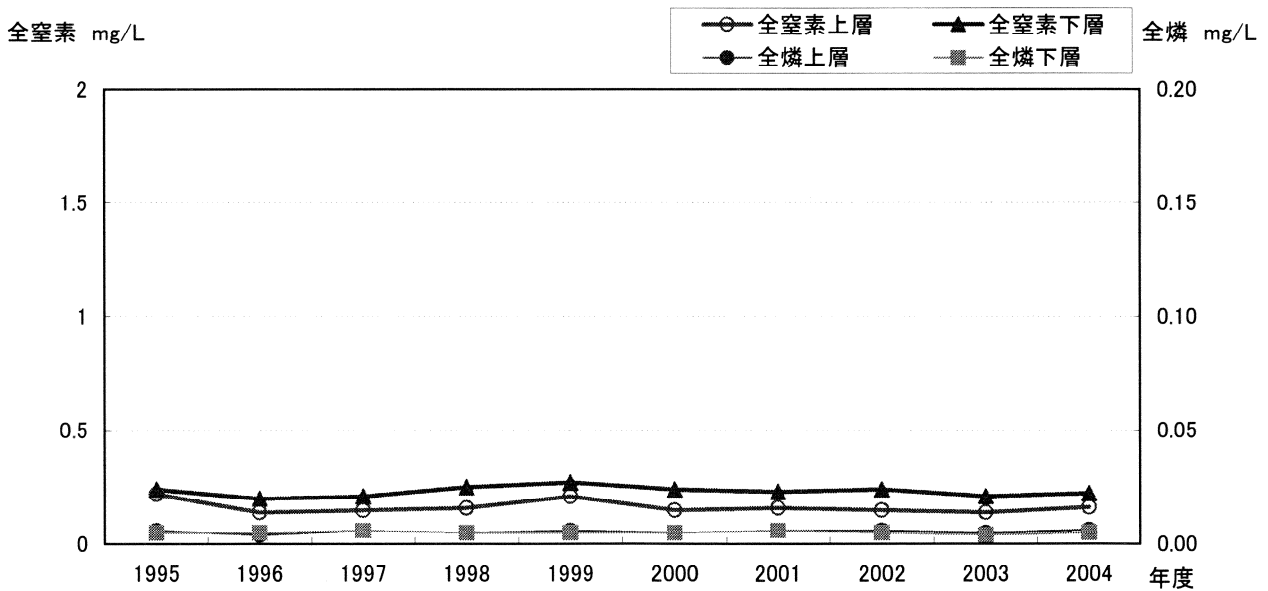
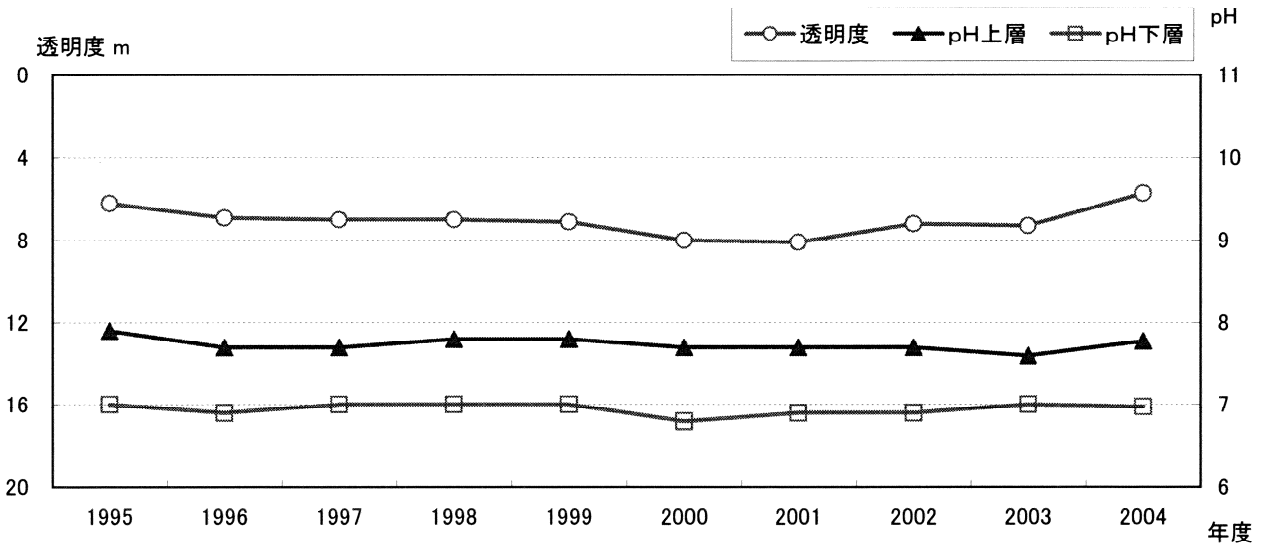
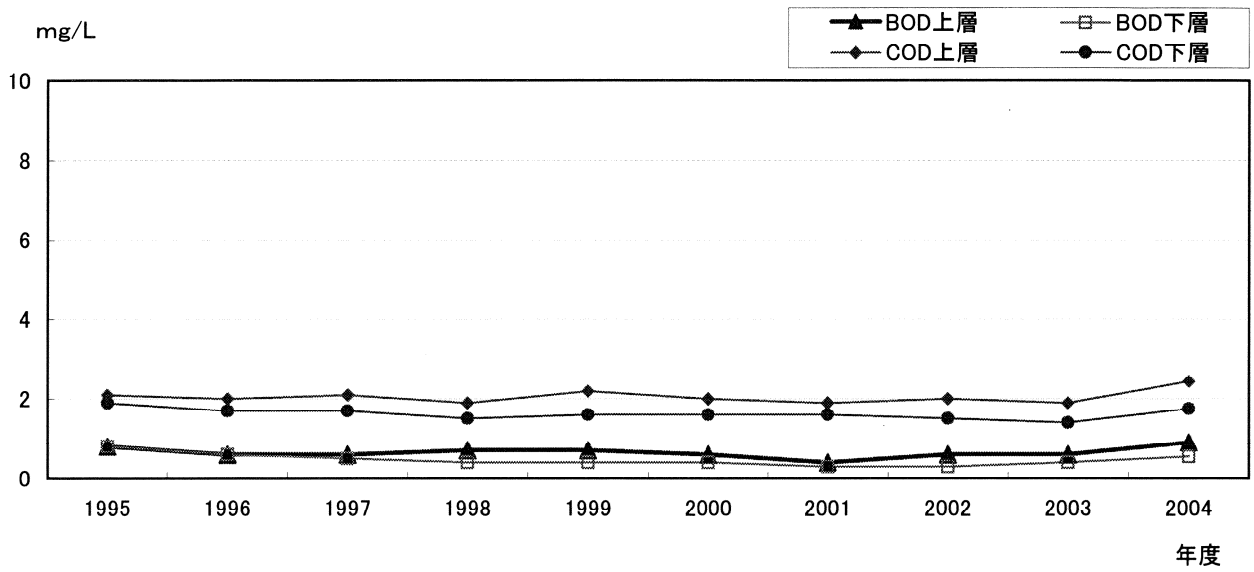


图7-4 丹沢湖(湖央部)

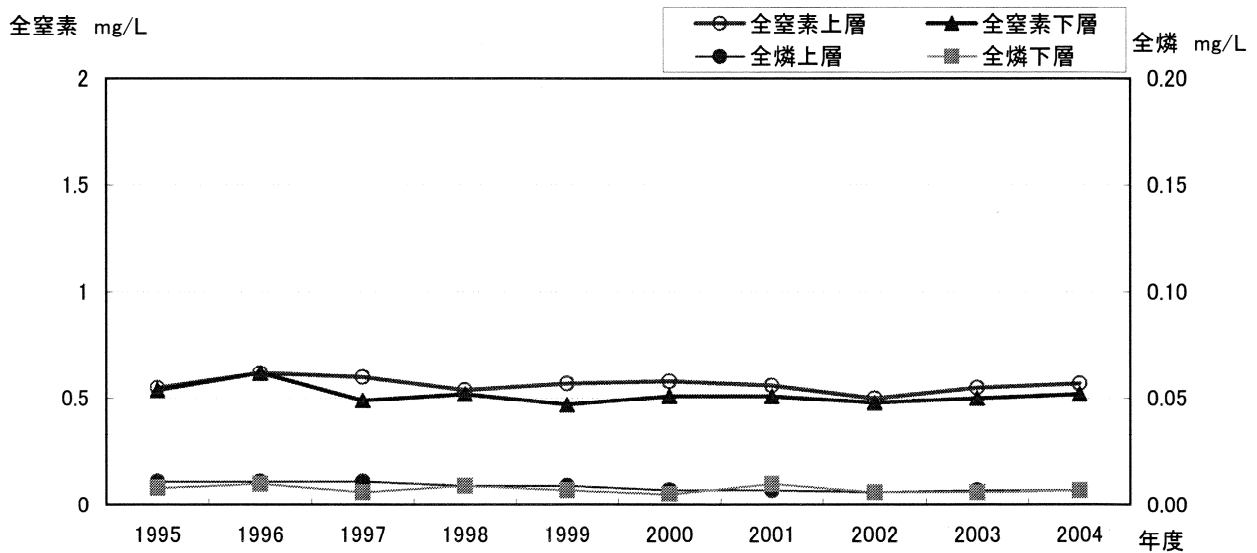
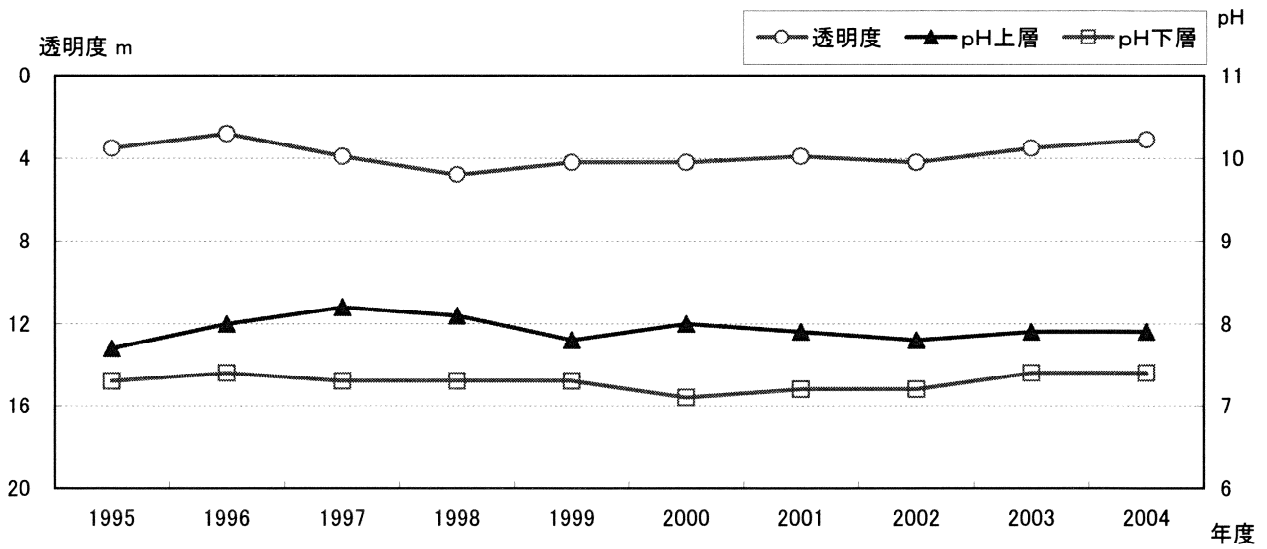
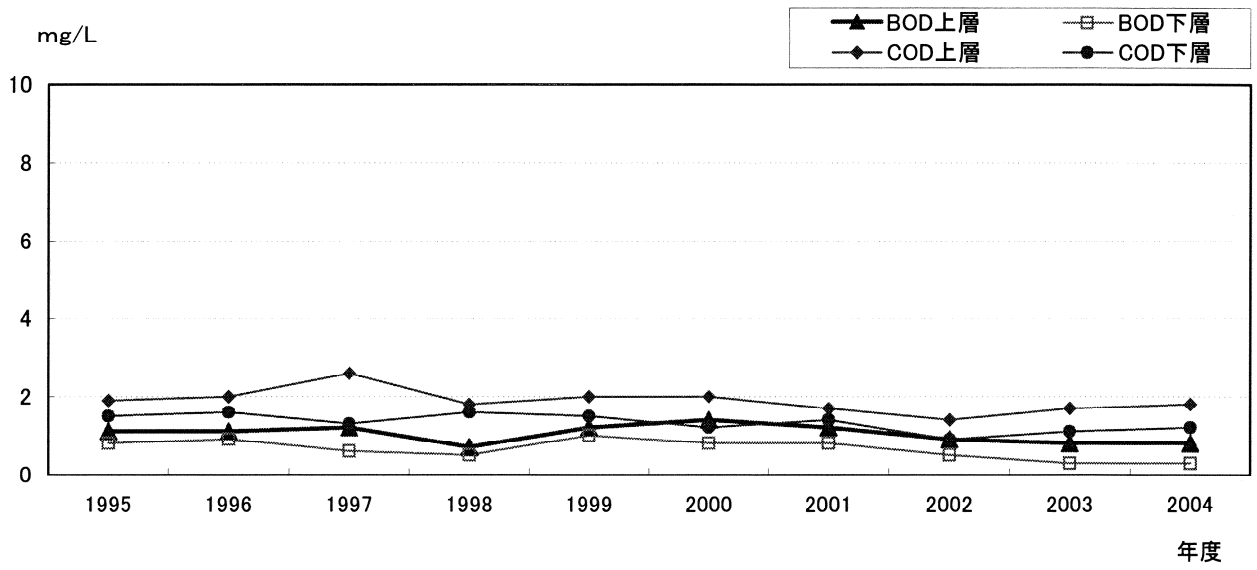


図-8 湖沼の主要地点における月別推移  
(透明度・pH・BOD・COD・全窒素・全磷)

図8-1 相模湖(湖央東部)

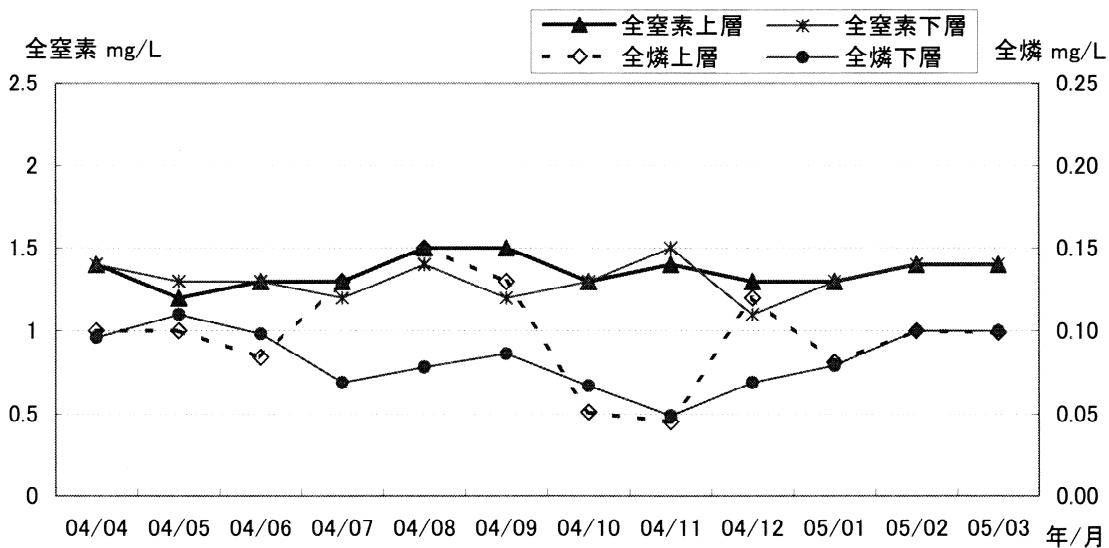
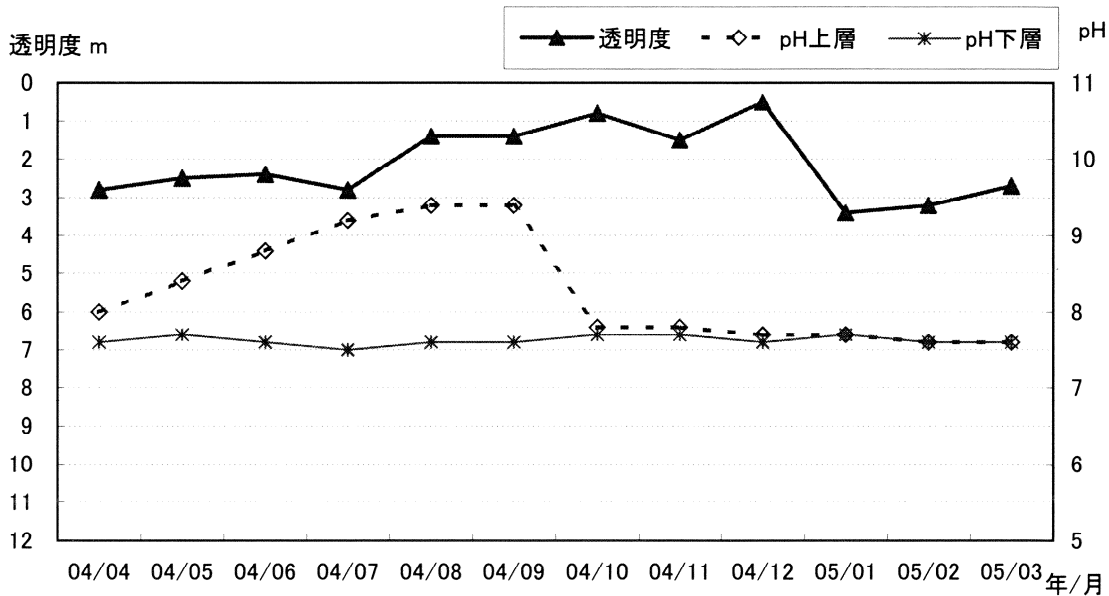
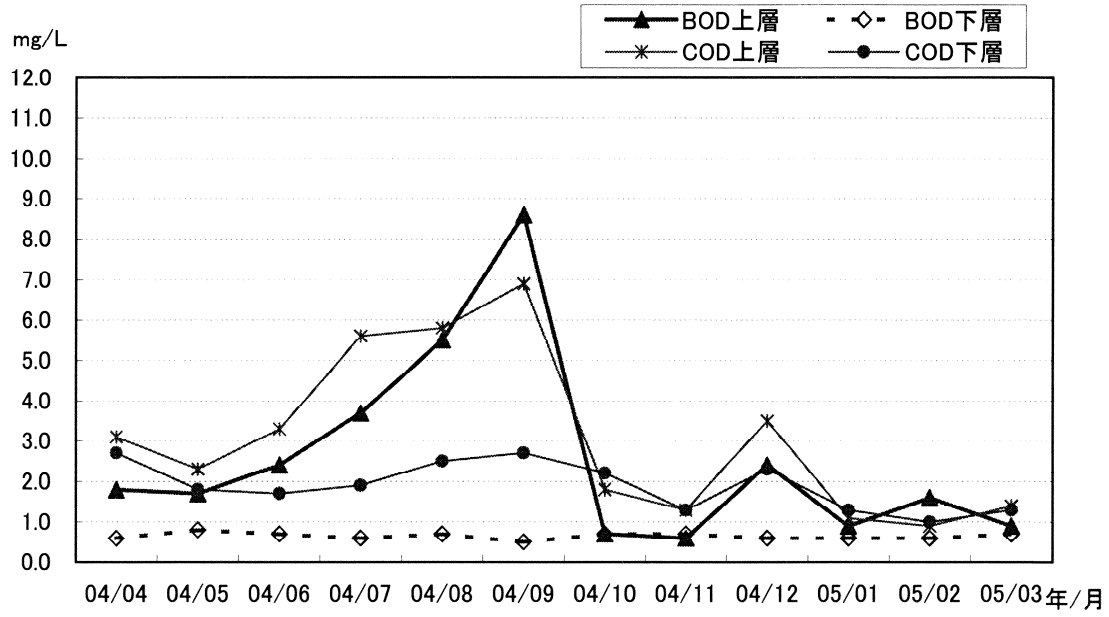


图8-2 津久井湖(湖央部)

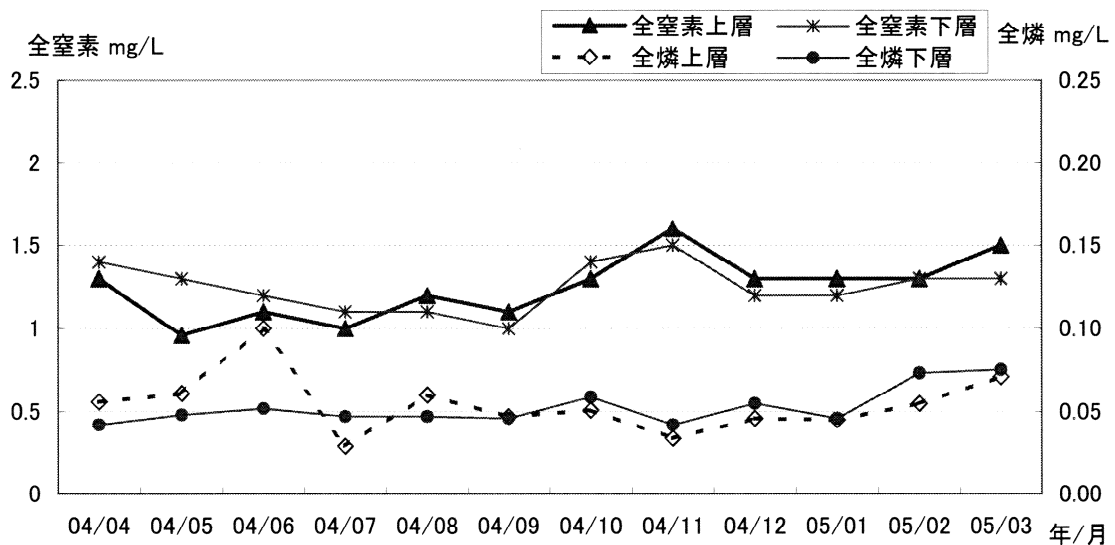
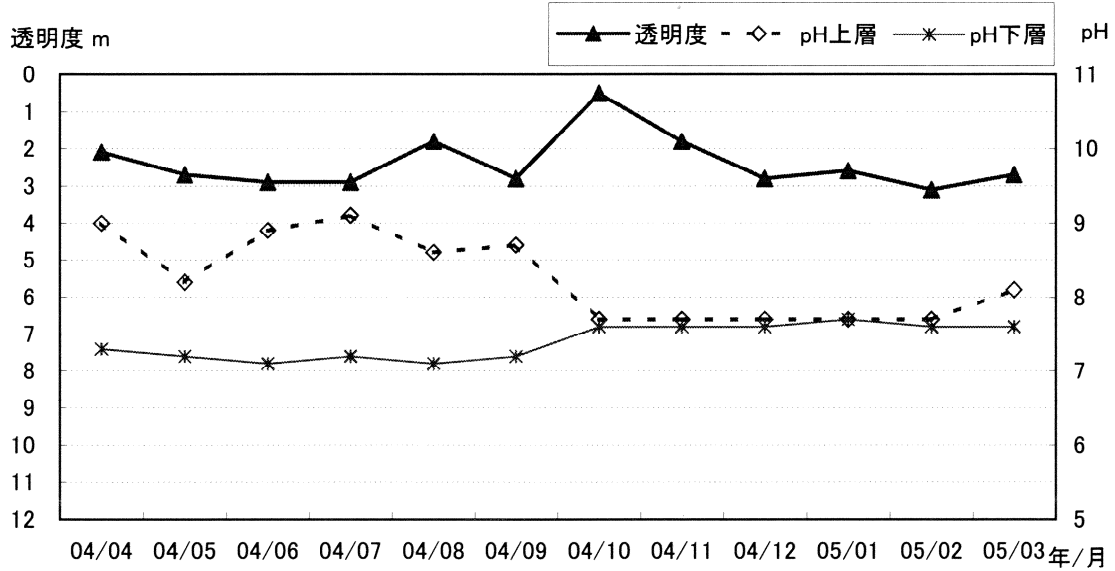
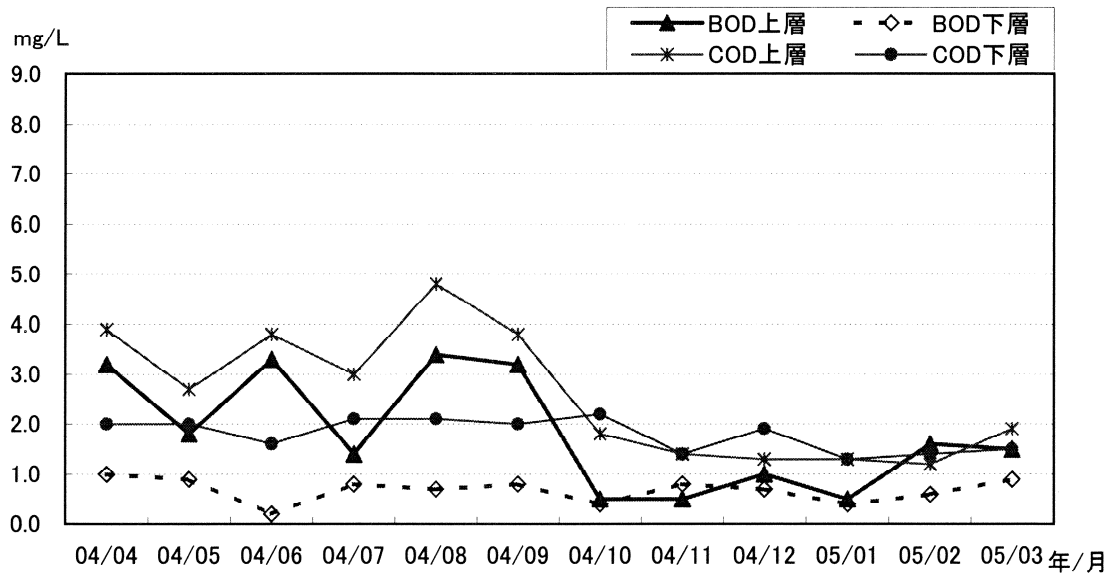


図8-3 芦ノ湖(湖央部)

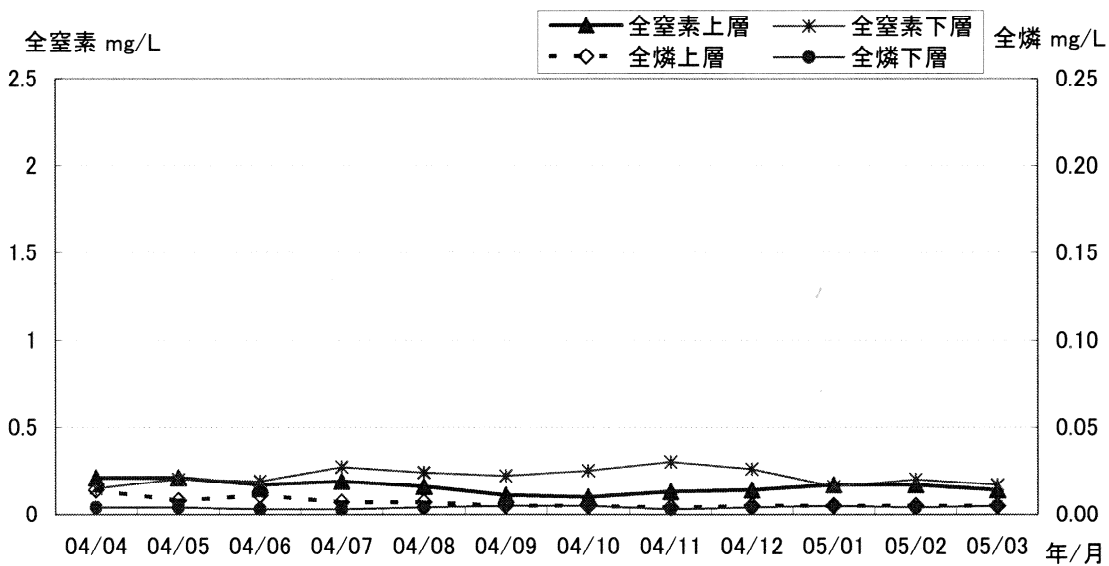
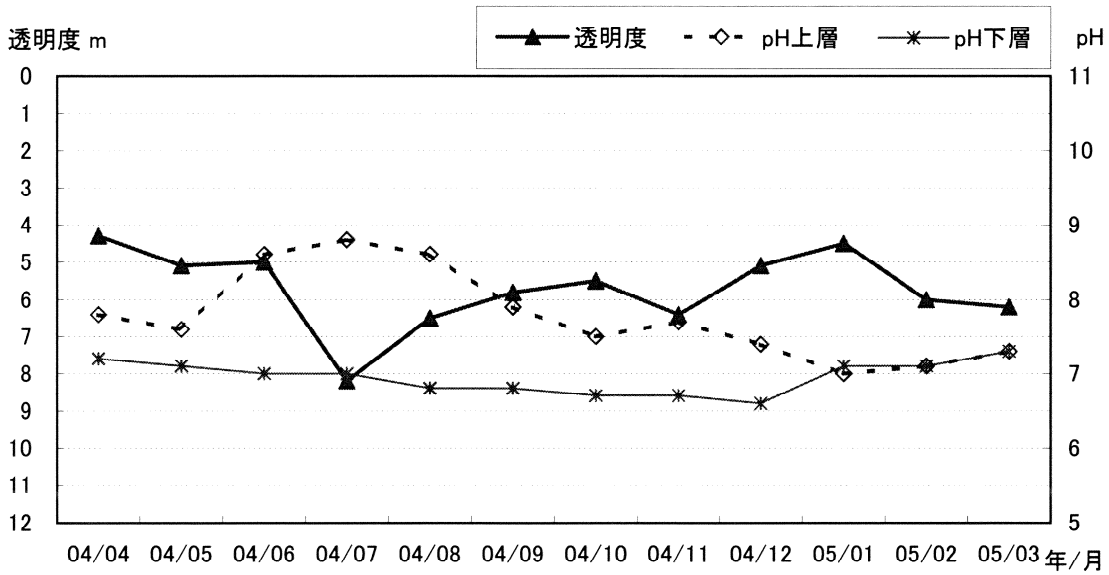
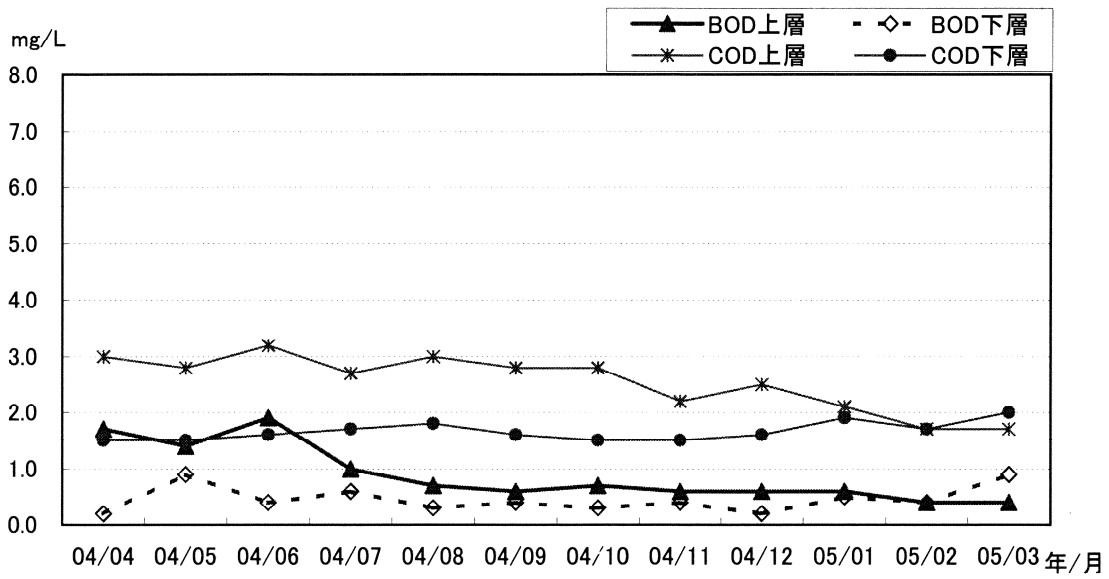


図8-4 丹沢湖(湖央部)

