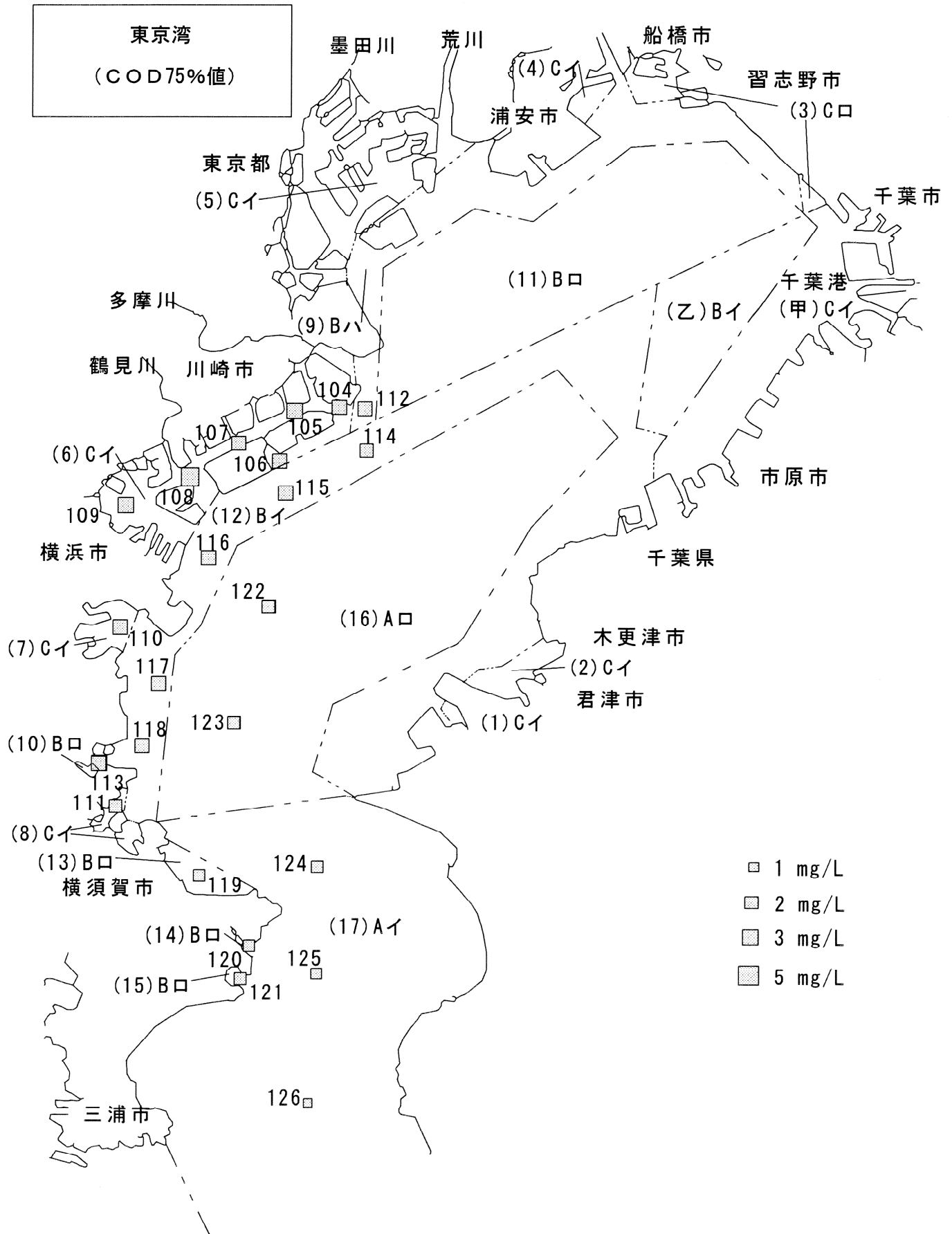


(海 域)

図-9 海域の水質汚濁状況



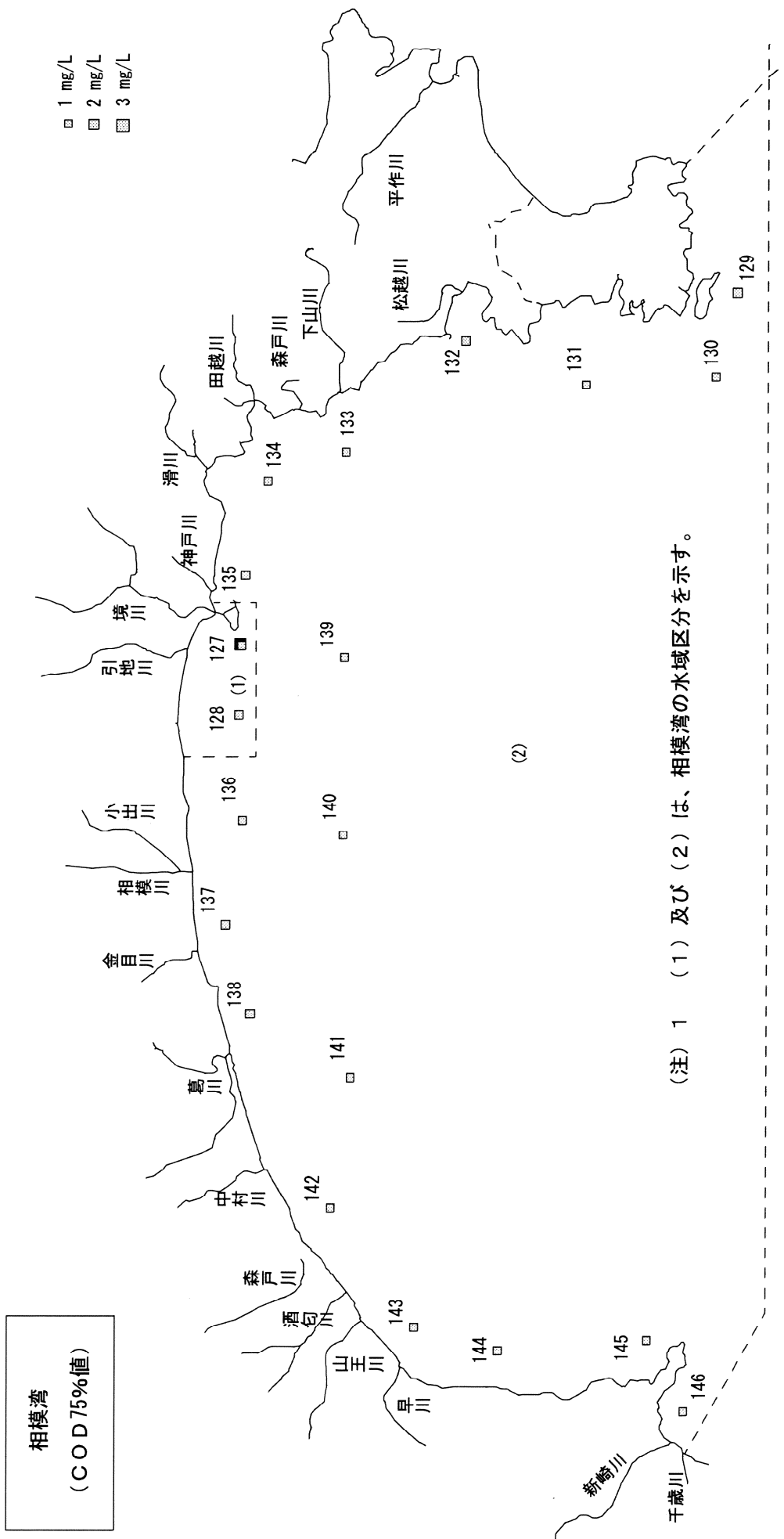


図-10 東京湾における年平均値の推移(全測定地点の平均値)
(pH・COD・全窒素・全磷)

図10-1 東京湾(全域)

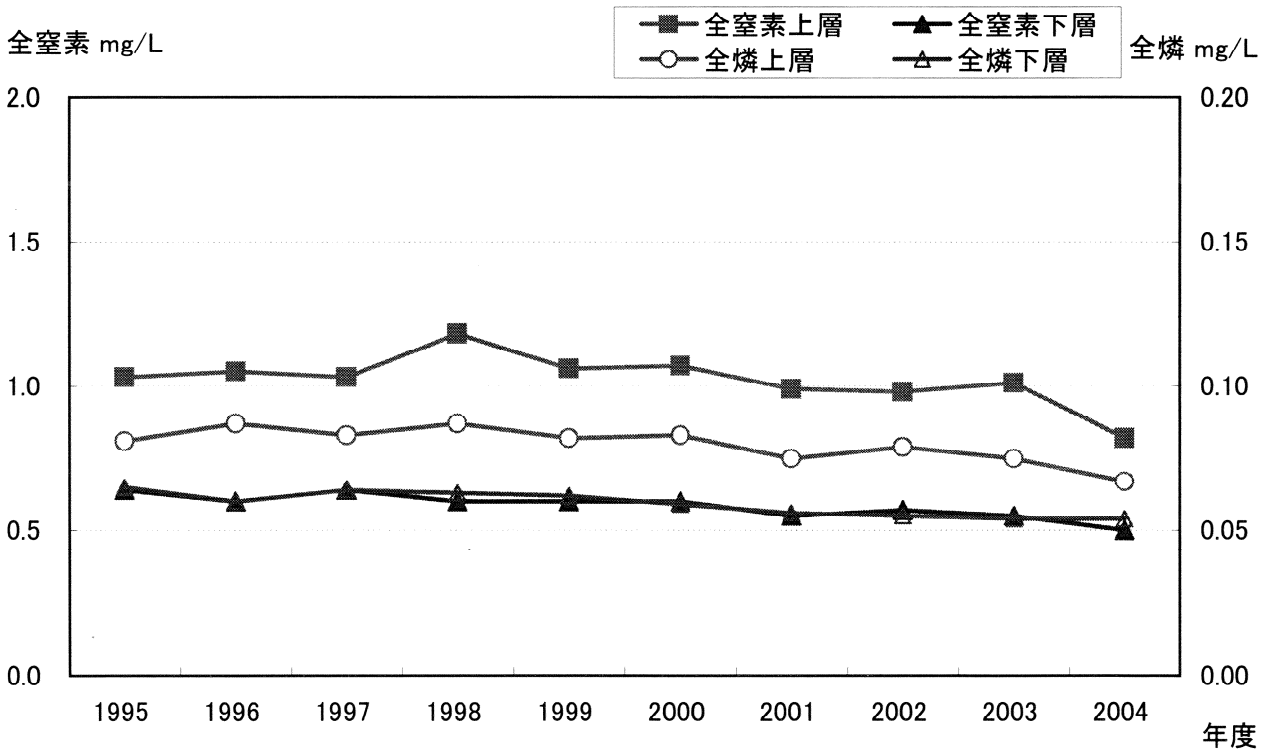
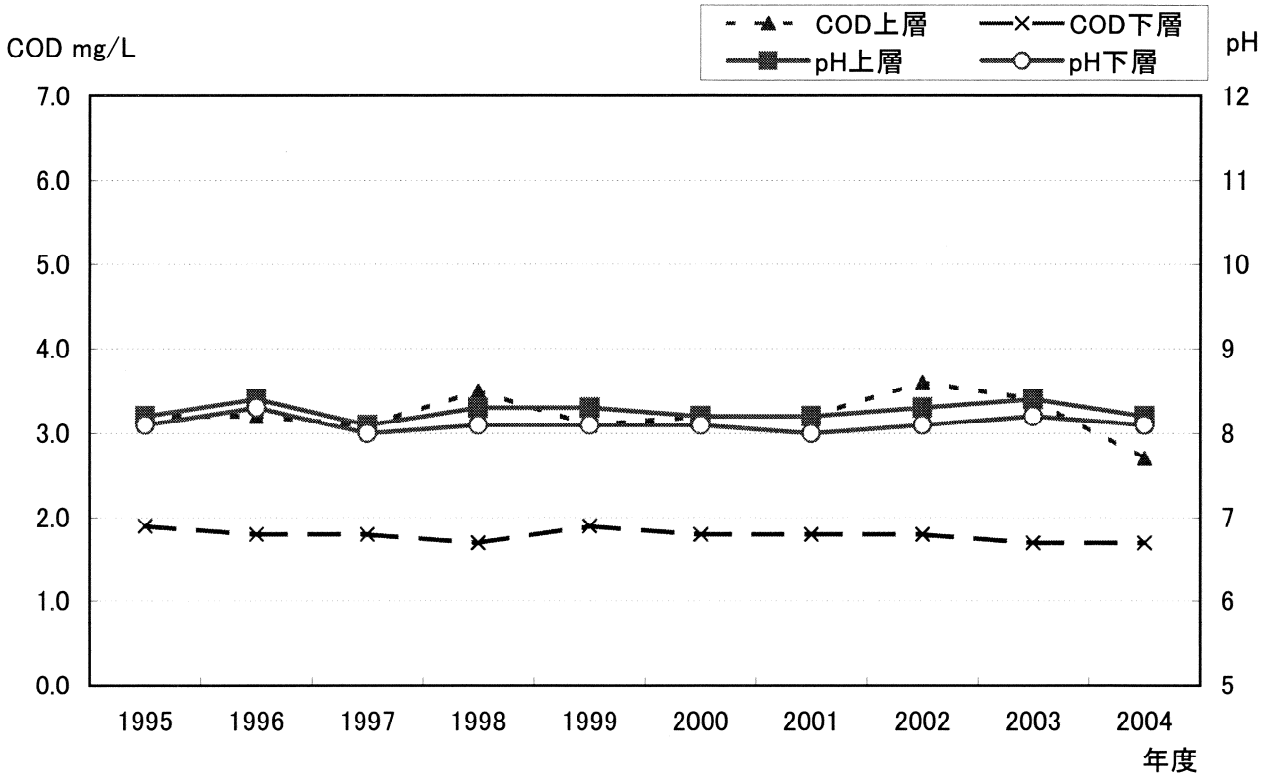
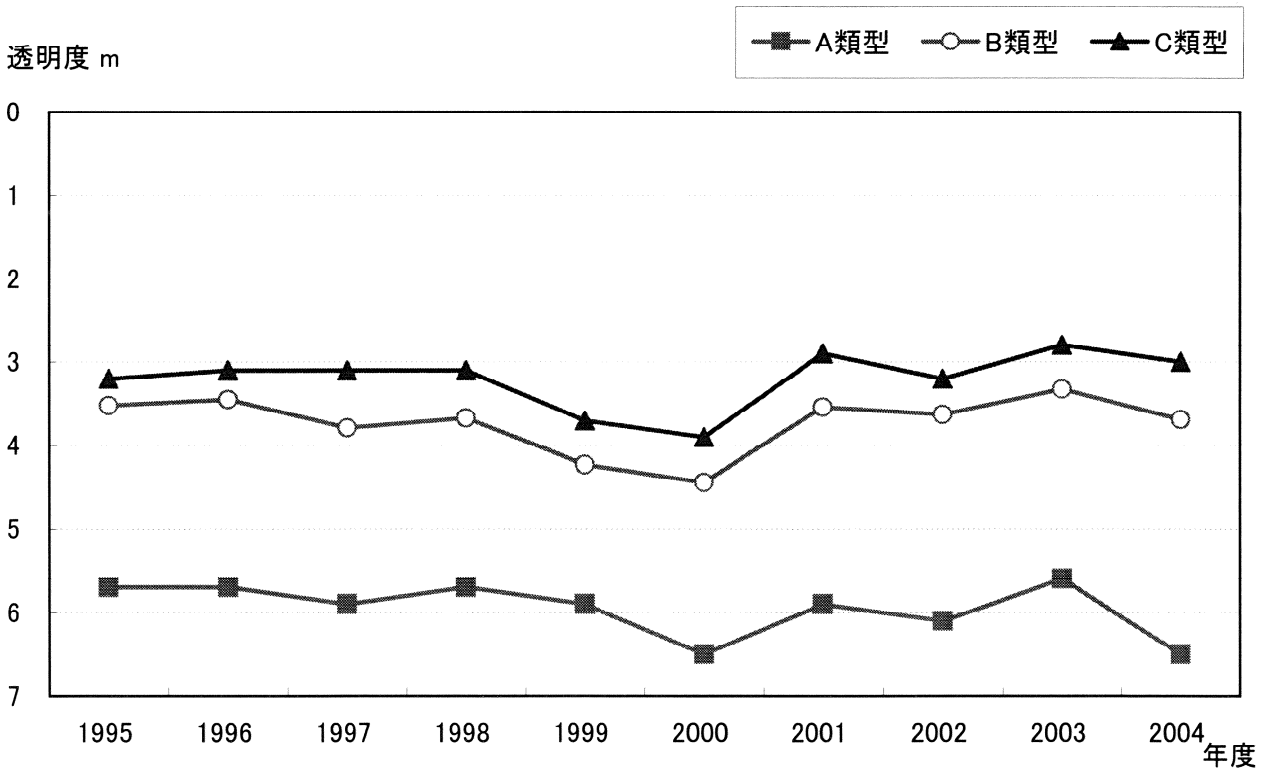
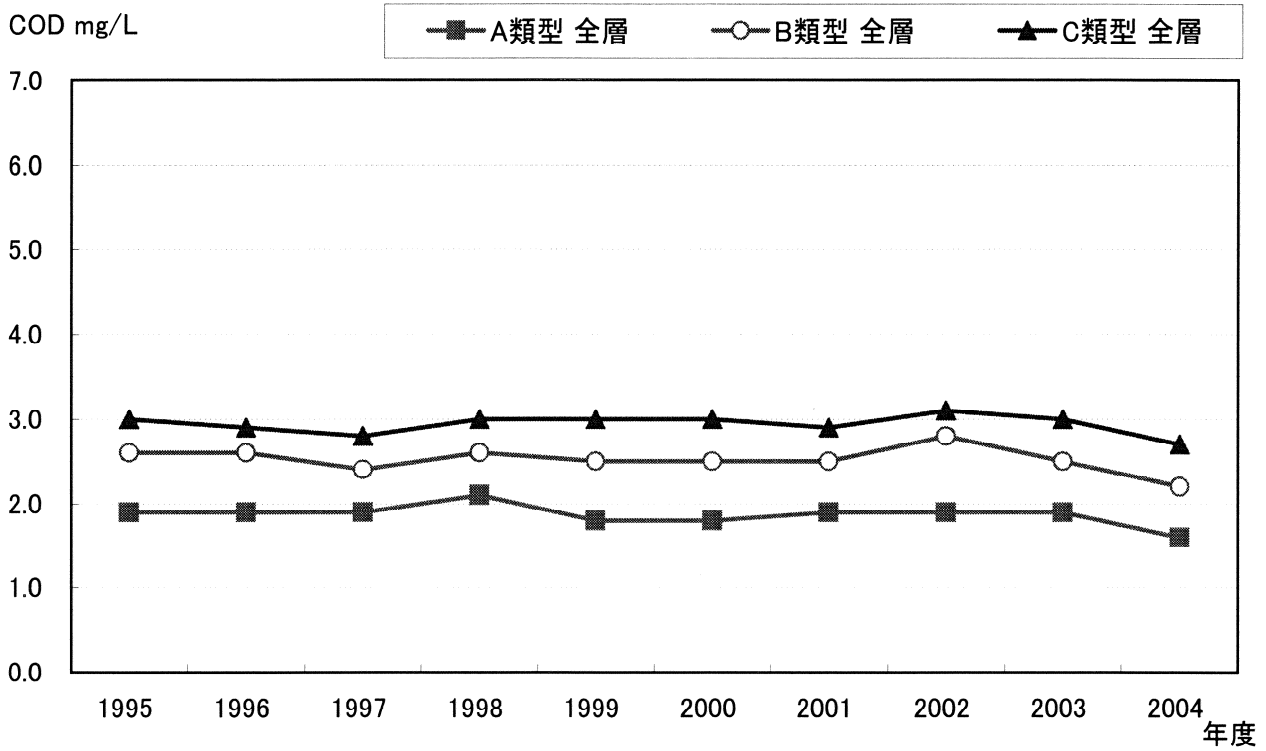
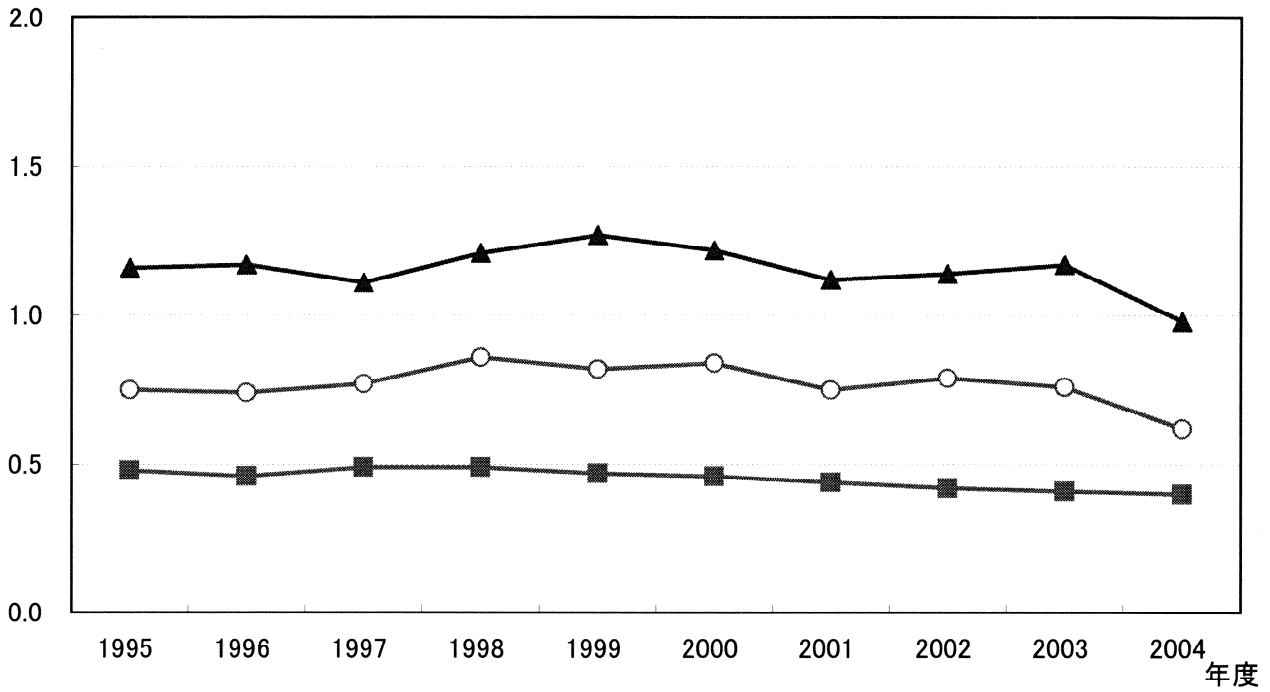


图10-2 东京湾(类型别)
(COD·透明度·全窒素·全磷)



全窒素 mg/L

■ A類型 全層 ○ B類型 全層 ▲ C類型 全層



全磷 mg/L

■ A類型 全層 ○ B類型 全層 ▲ C類型 全層

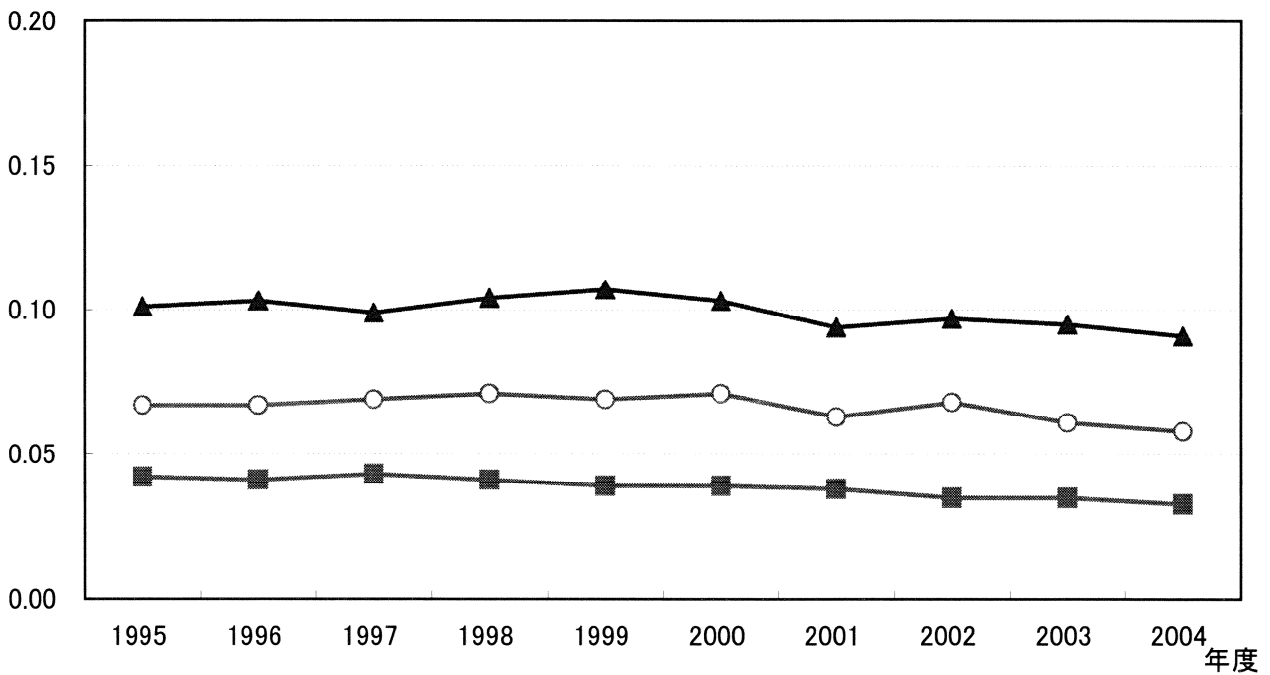


図-11 東京湾の主要地点における年平均値の推移
(pH・COD・全窒素・全磷)

図11-1 横浜港内

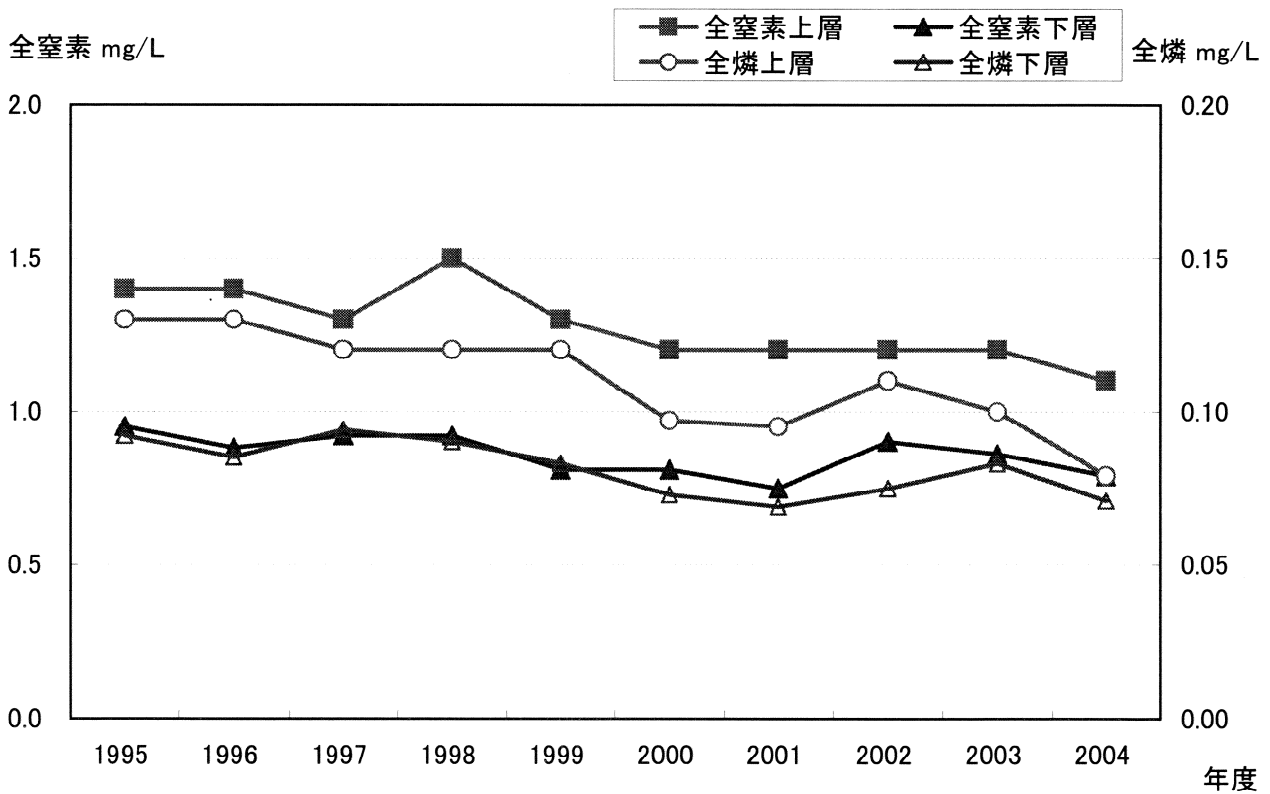
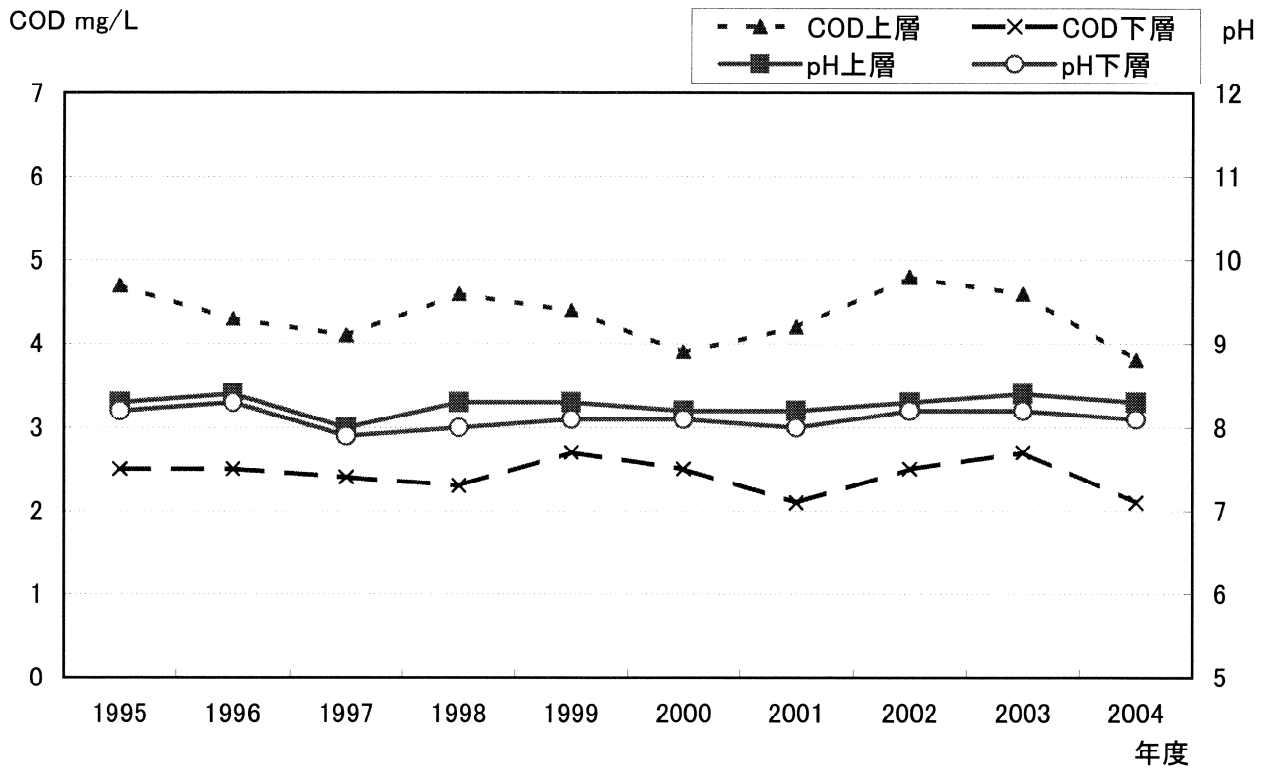


图11-2 東扇島沖

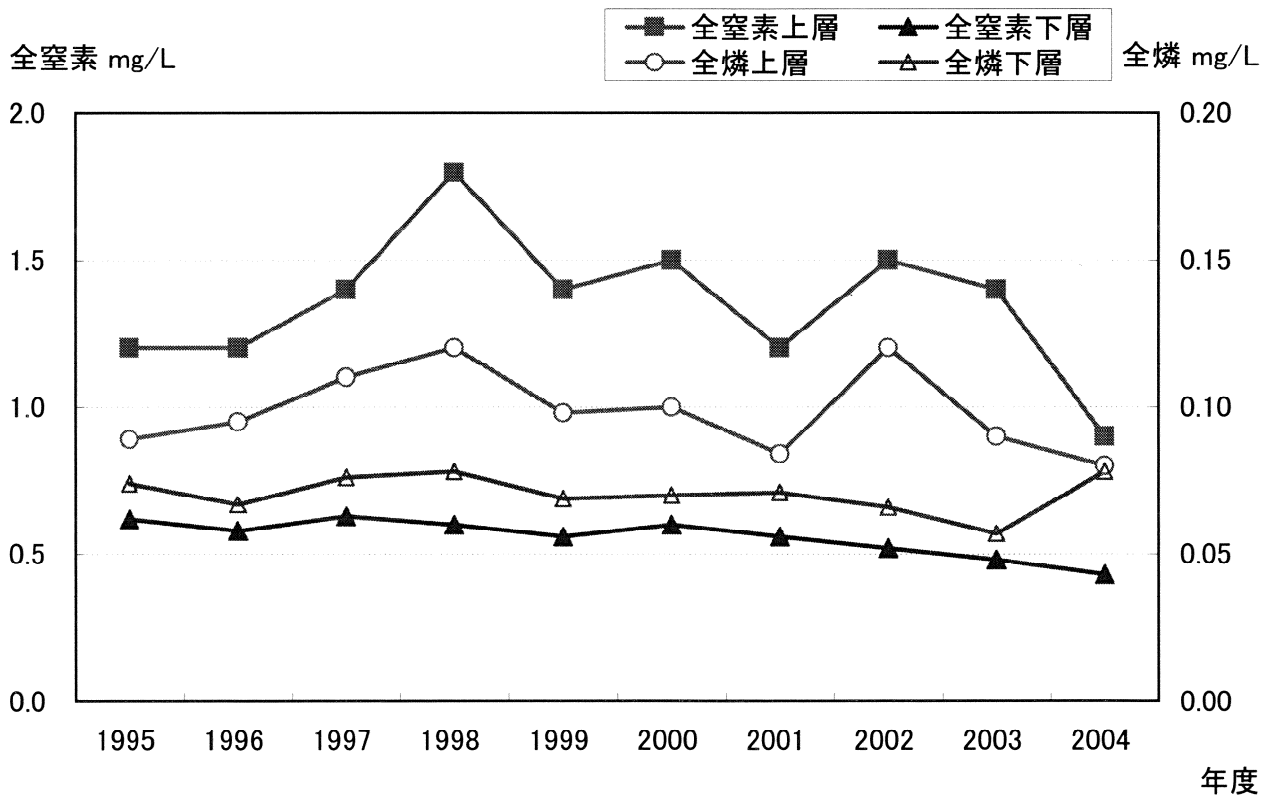
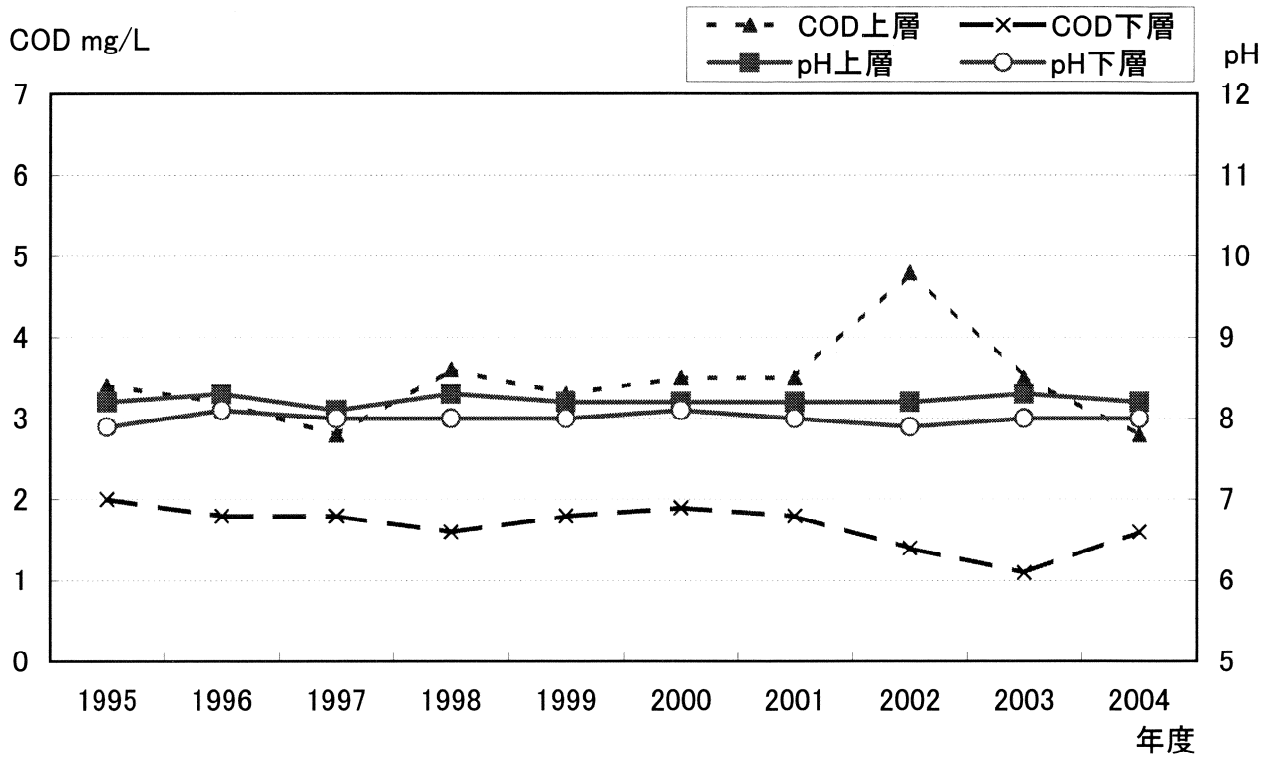


图11-3 富岡沖

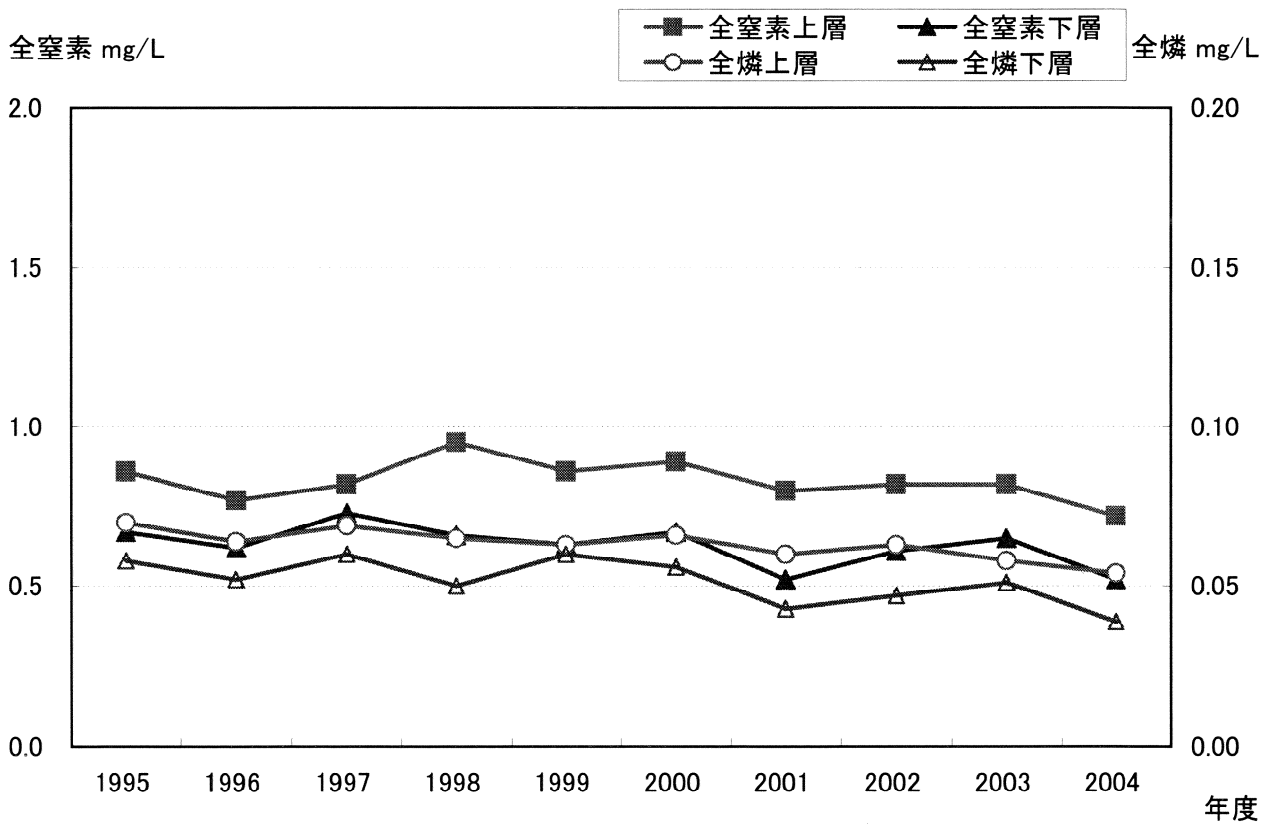
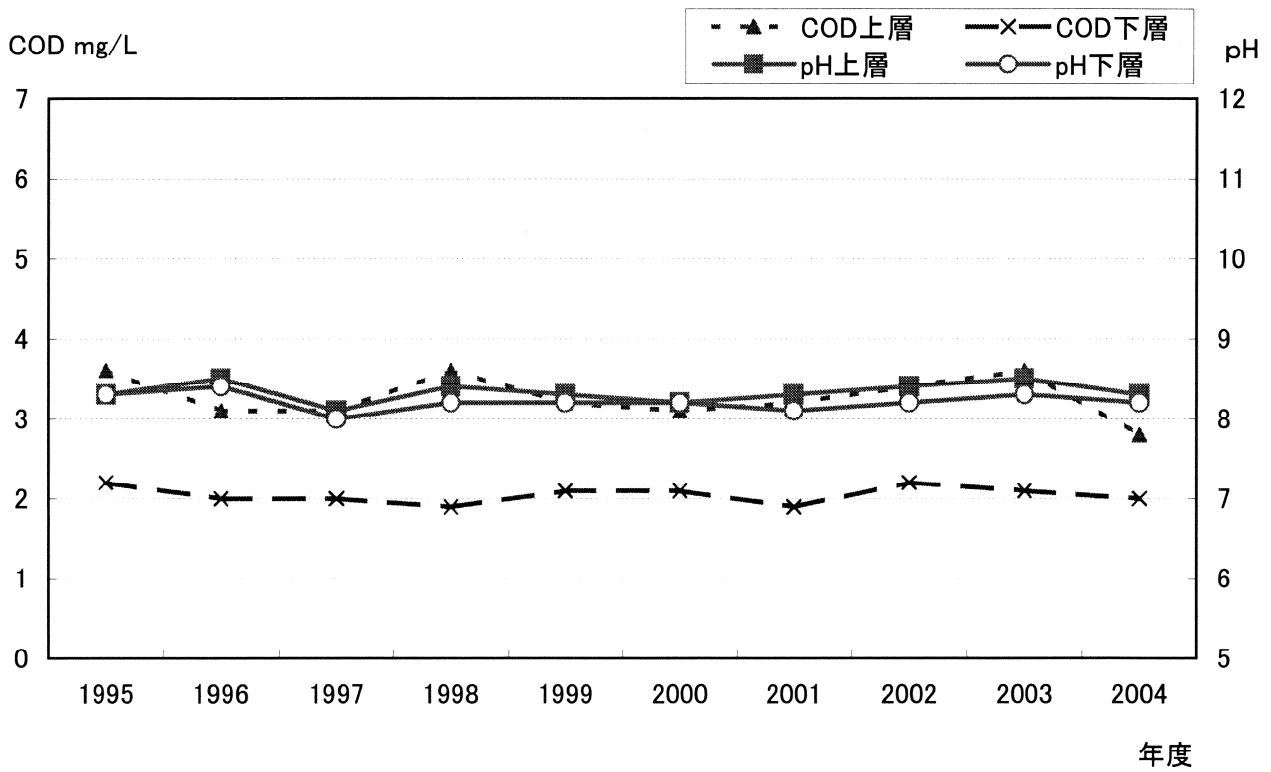


图11-4 大津湾

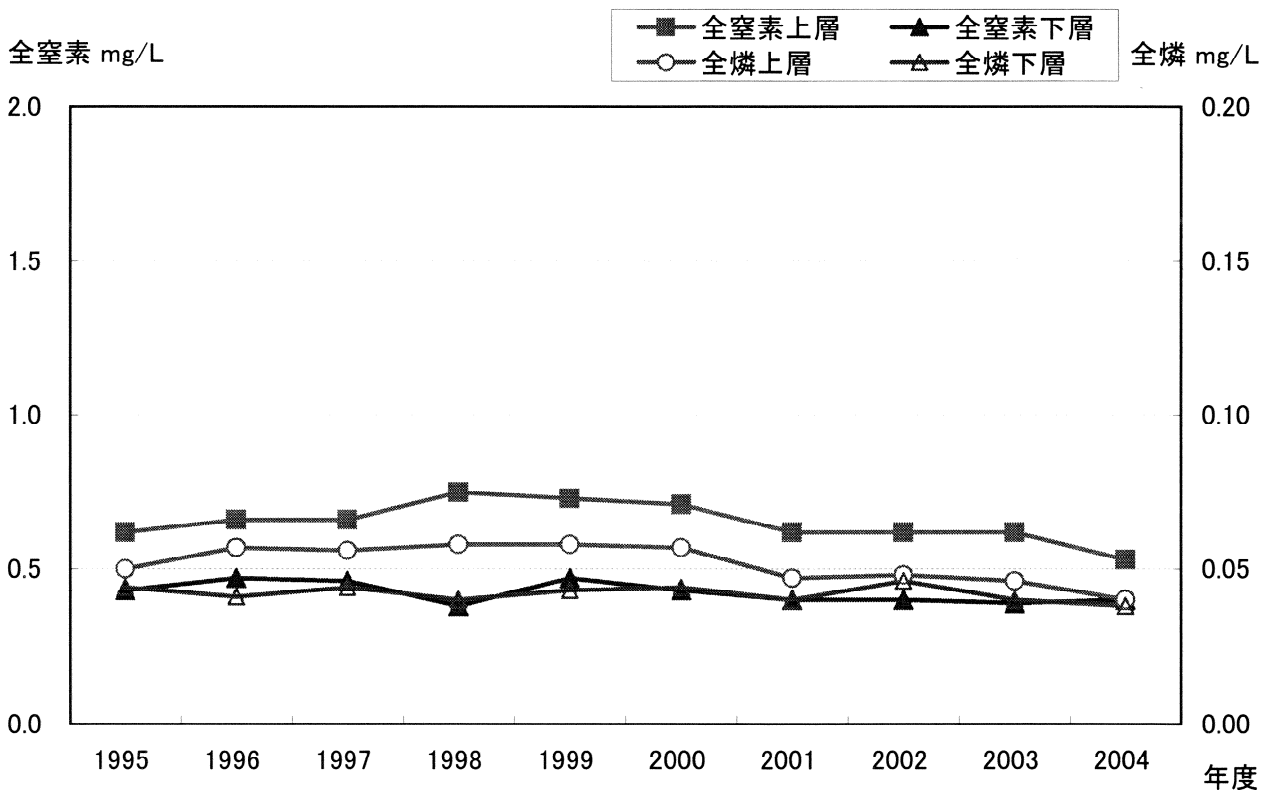
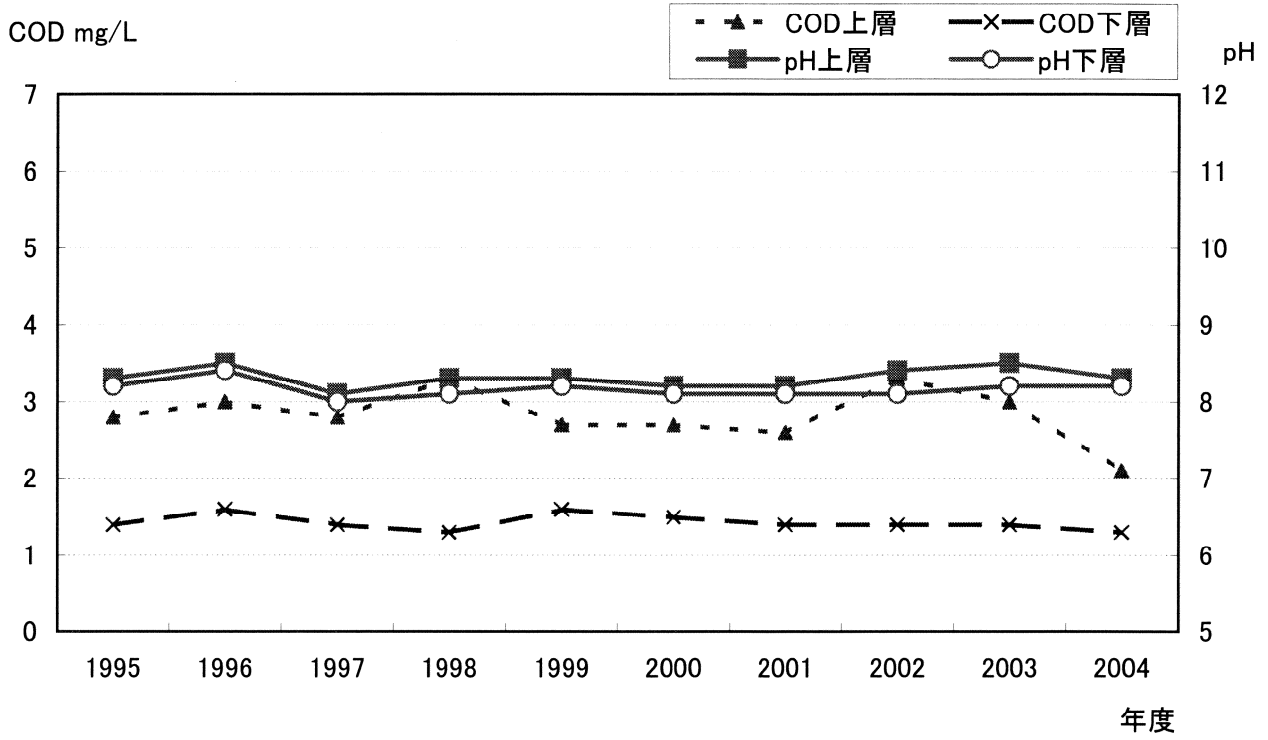


図11-5 中の瀬南

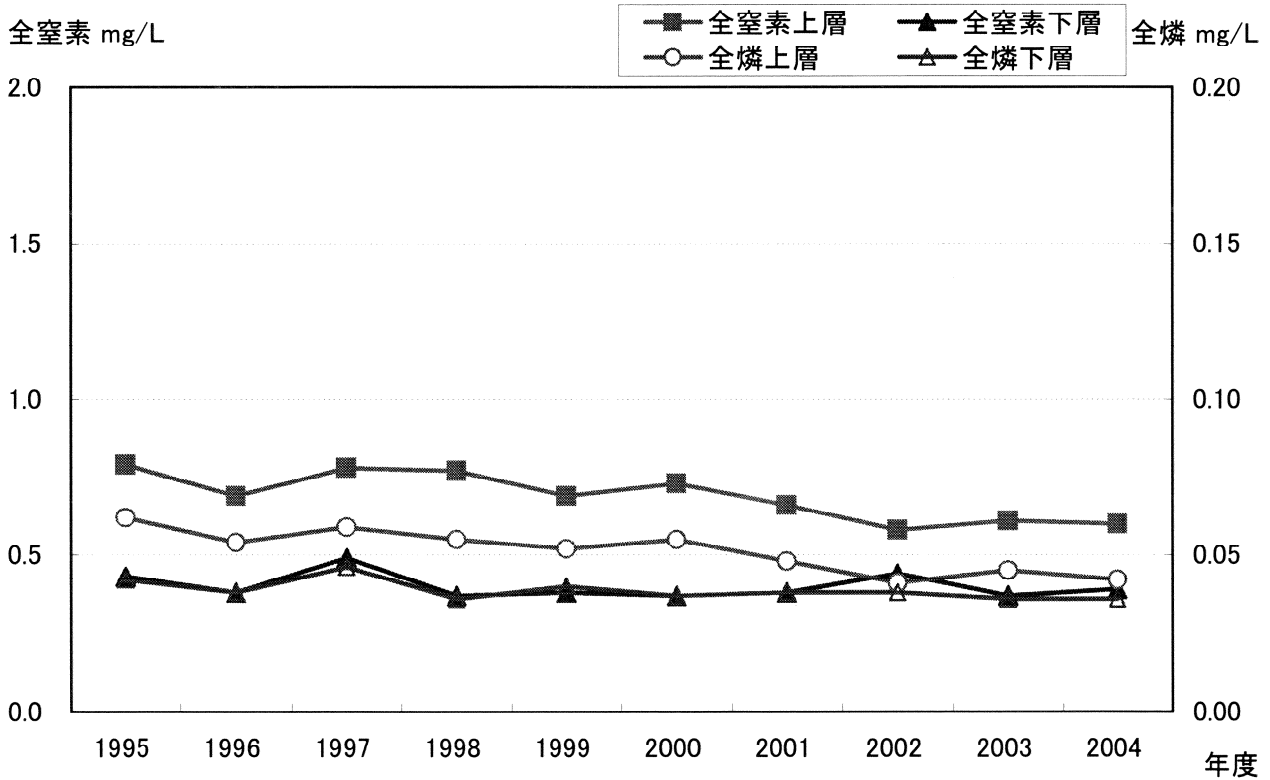
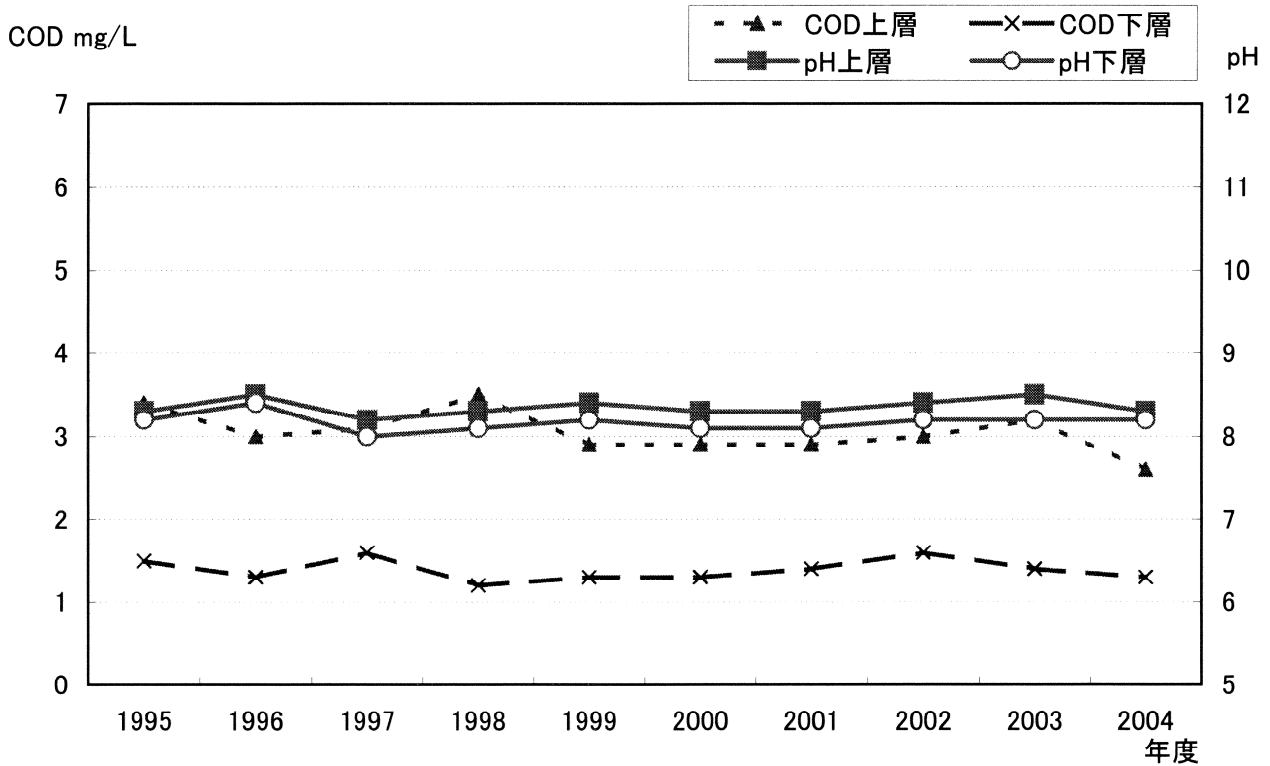


図11-6 浦賀沖

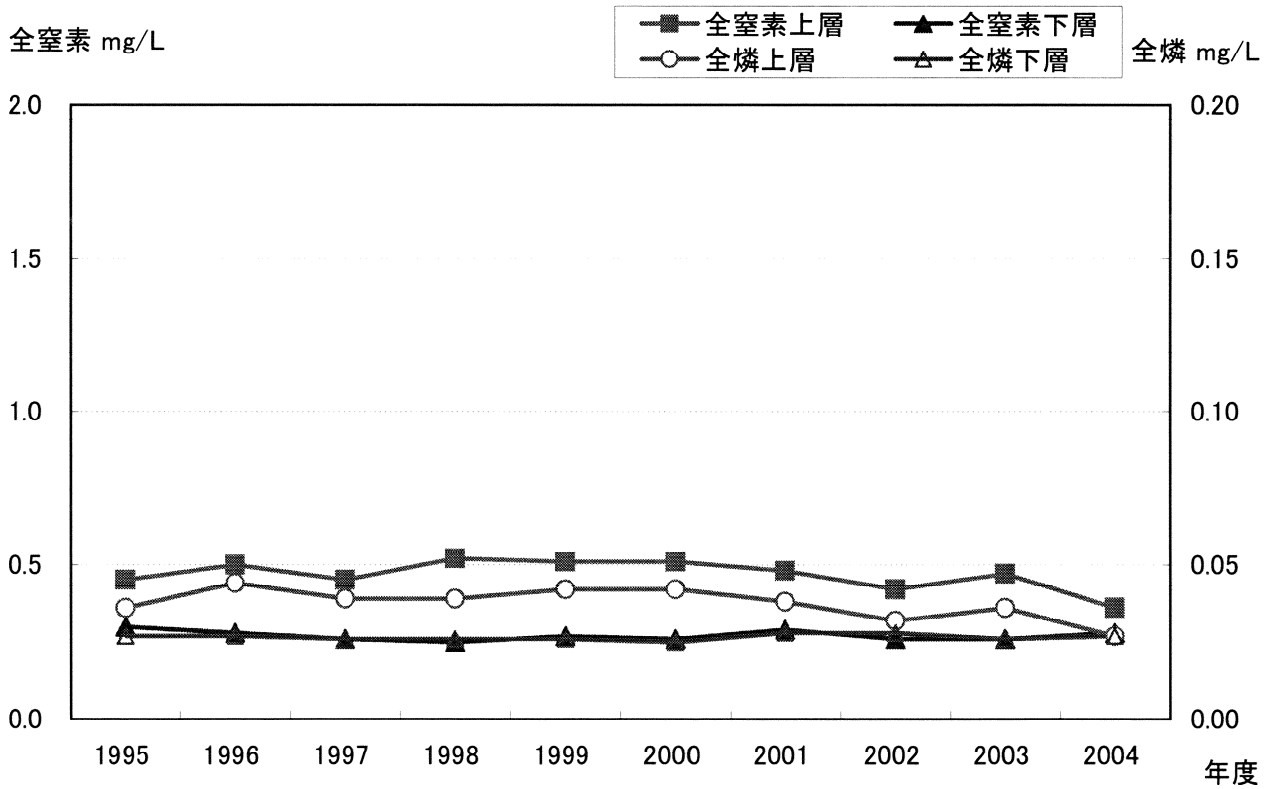
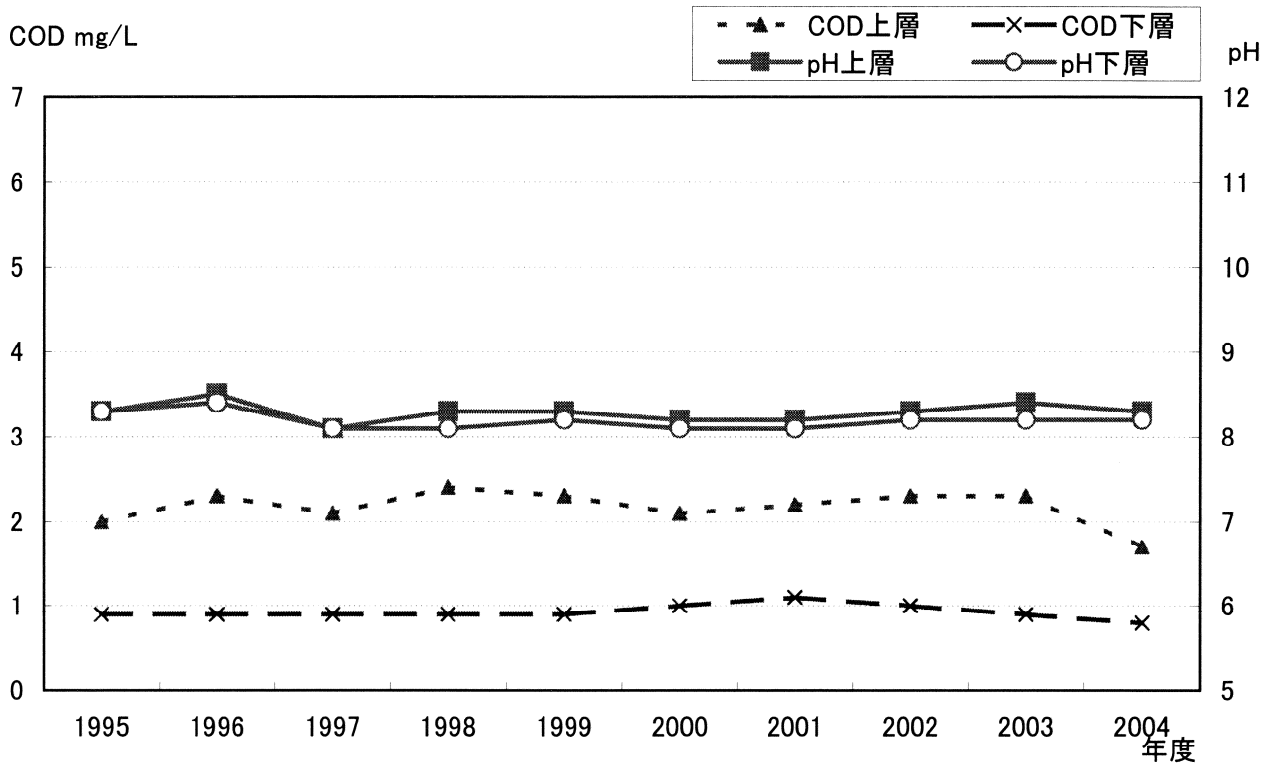


図-12 東京湾の主要地点における月別推移
(pH・COD・全窒素・全磷)

図12-1 横浜港内

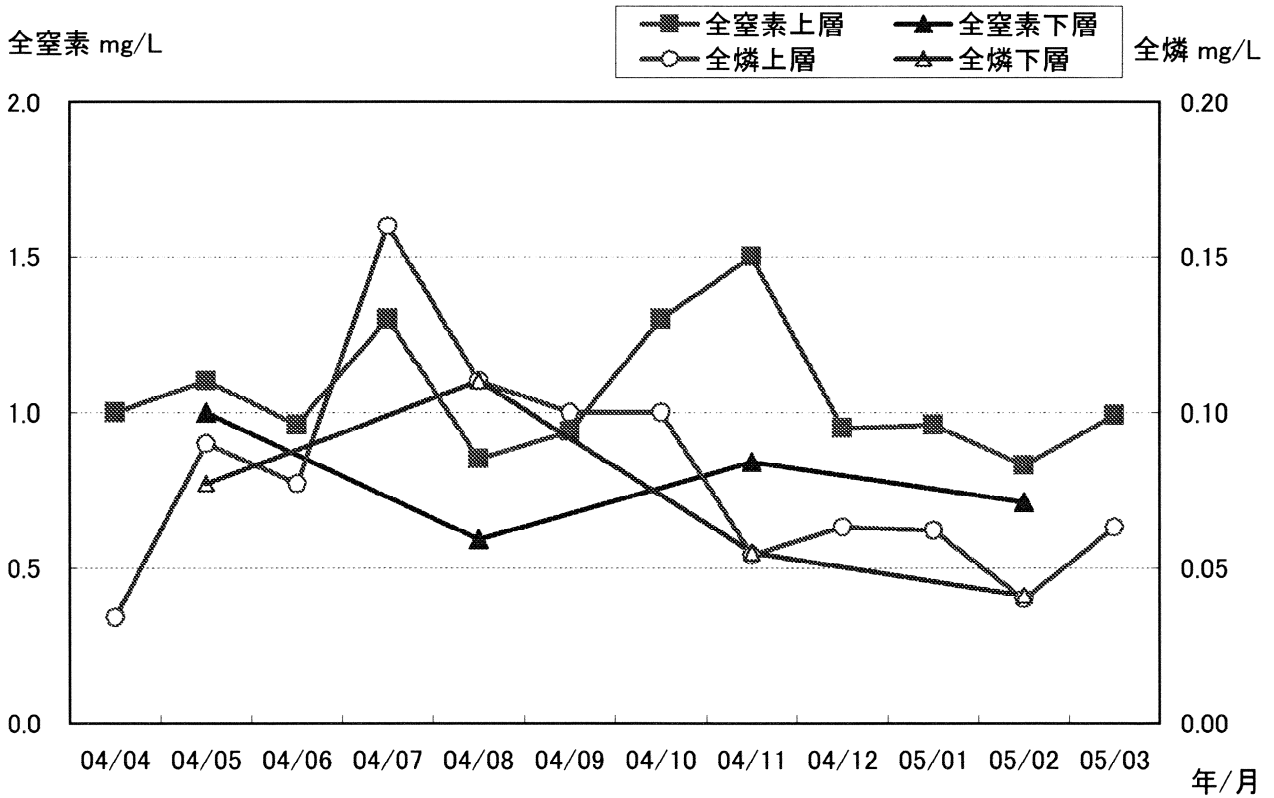
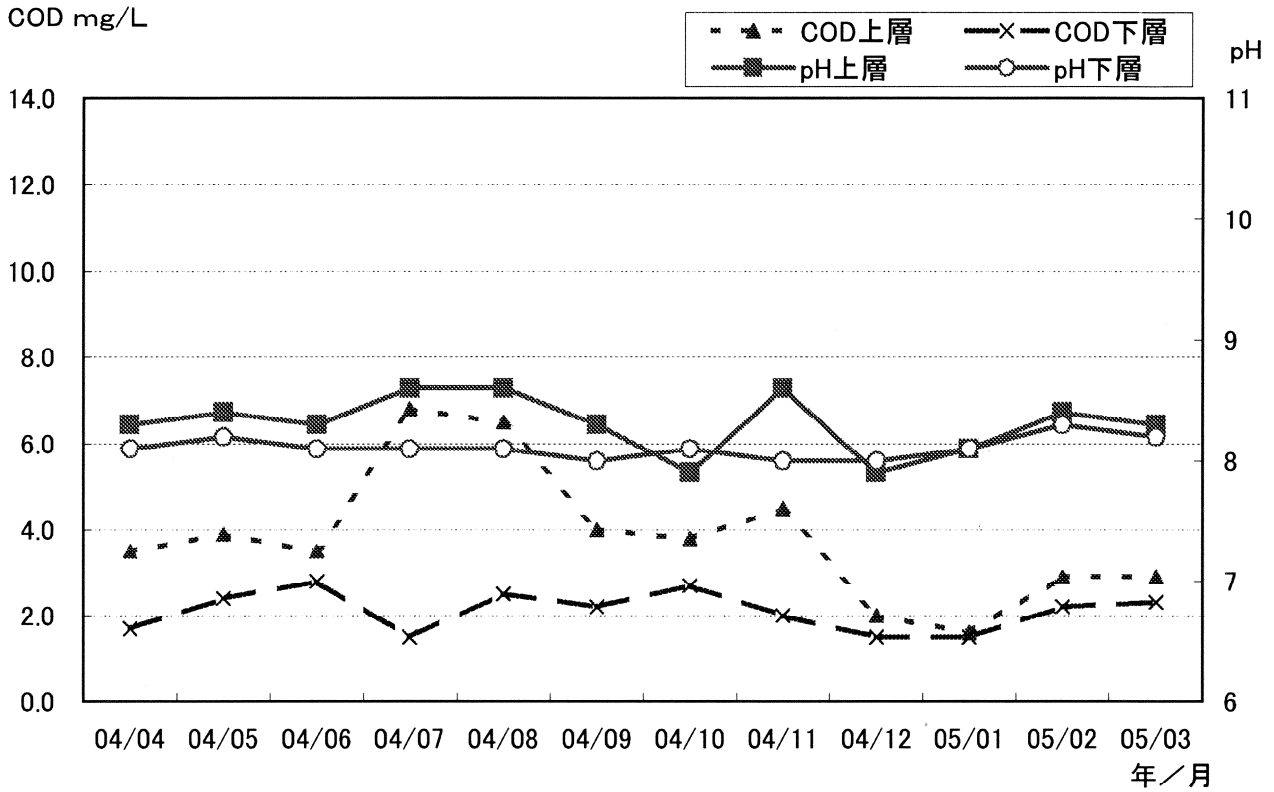


图12-2 東扇島沖

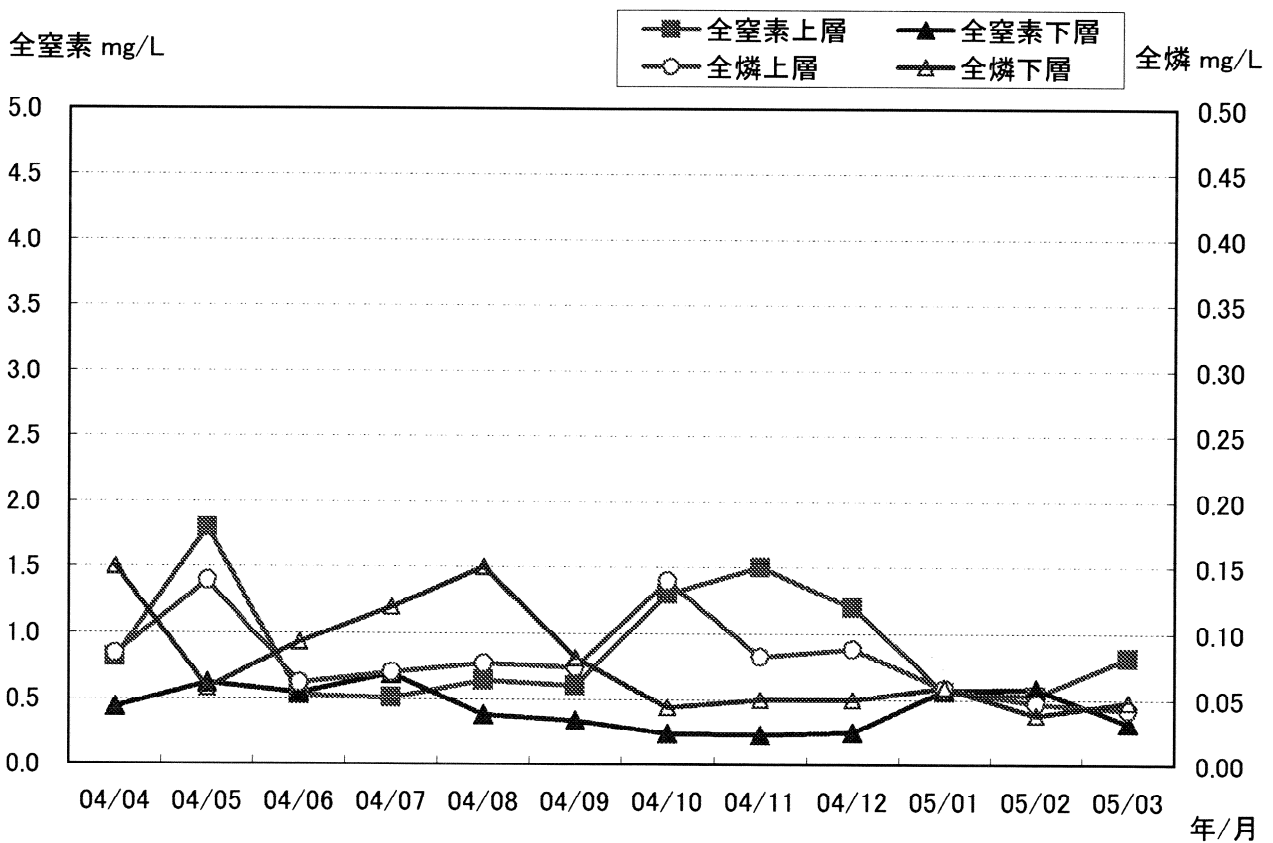
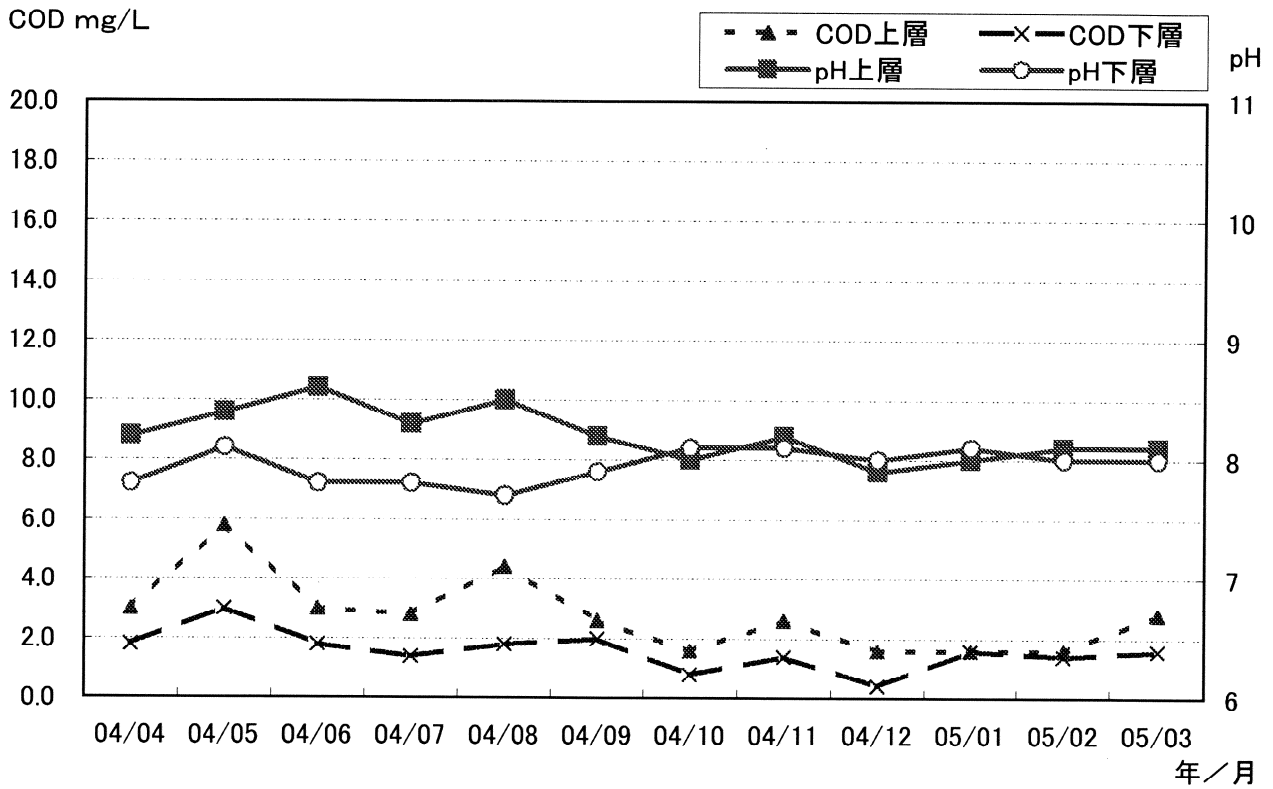


图12-3 富岡沖

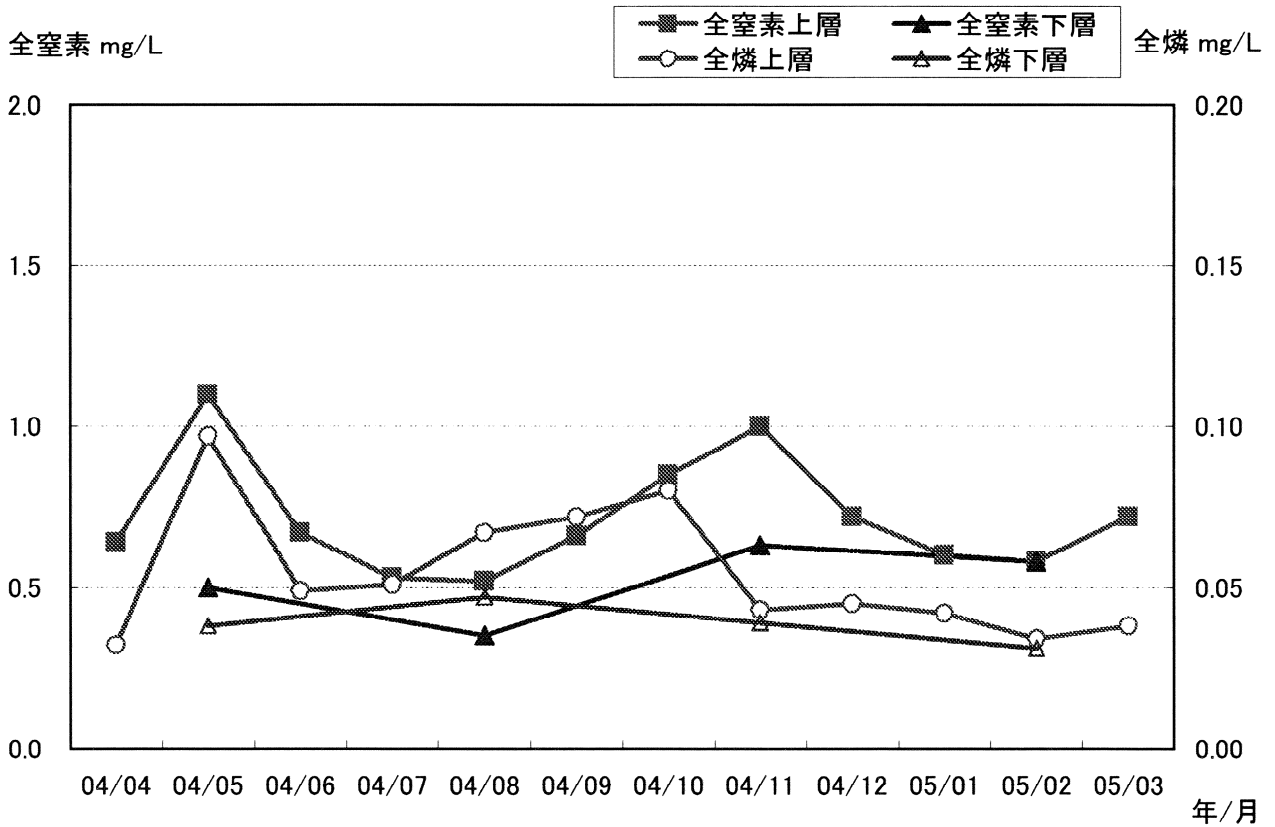
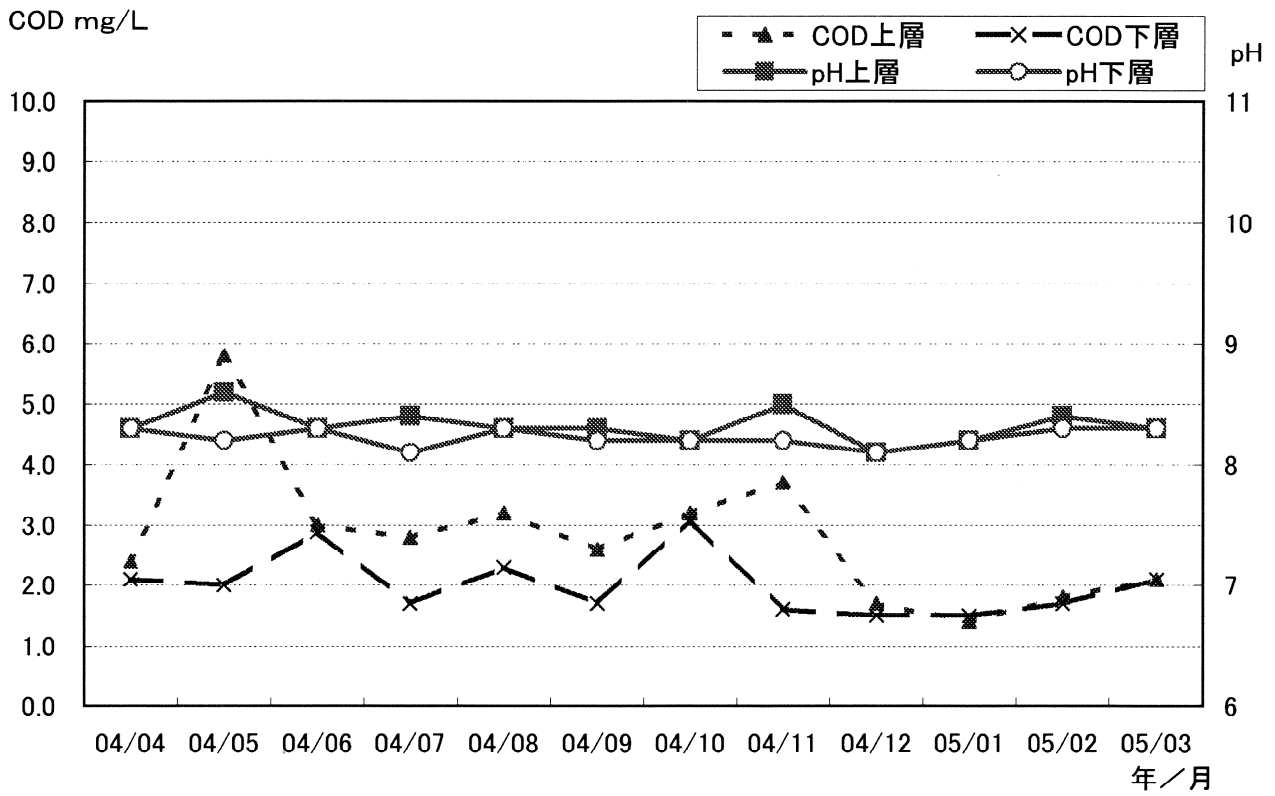


图12-4 大津湾

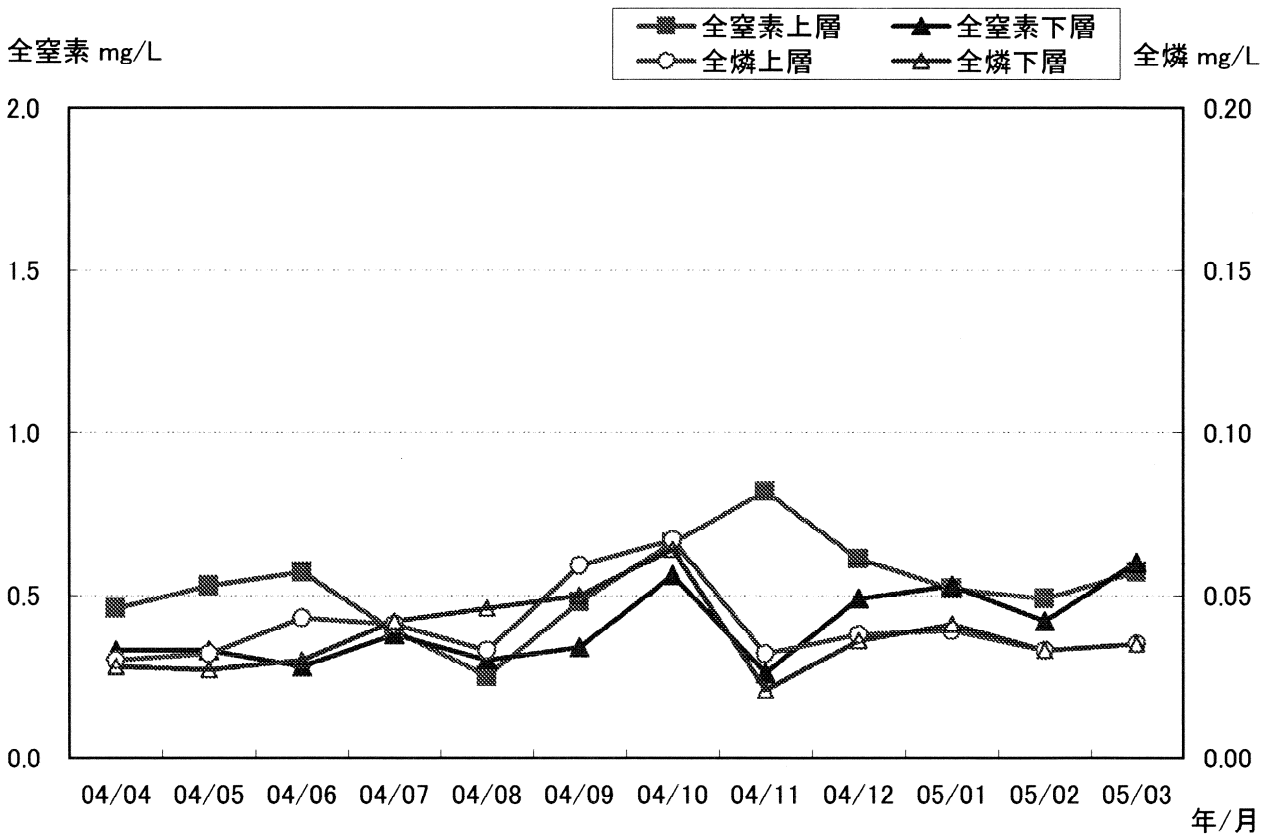
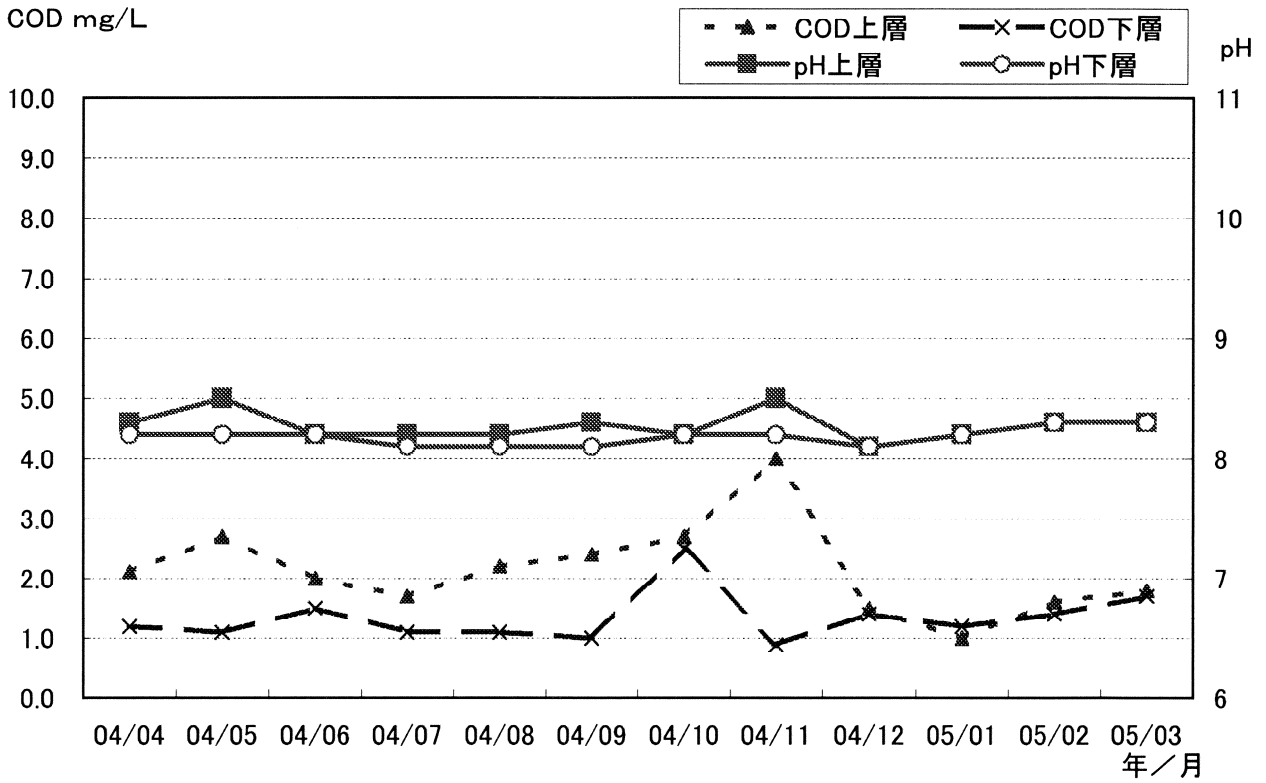


図12-5 中の瀬南

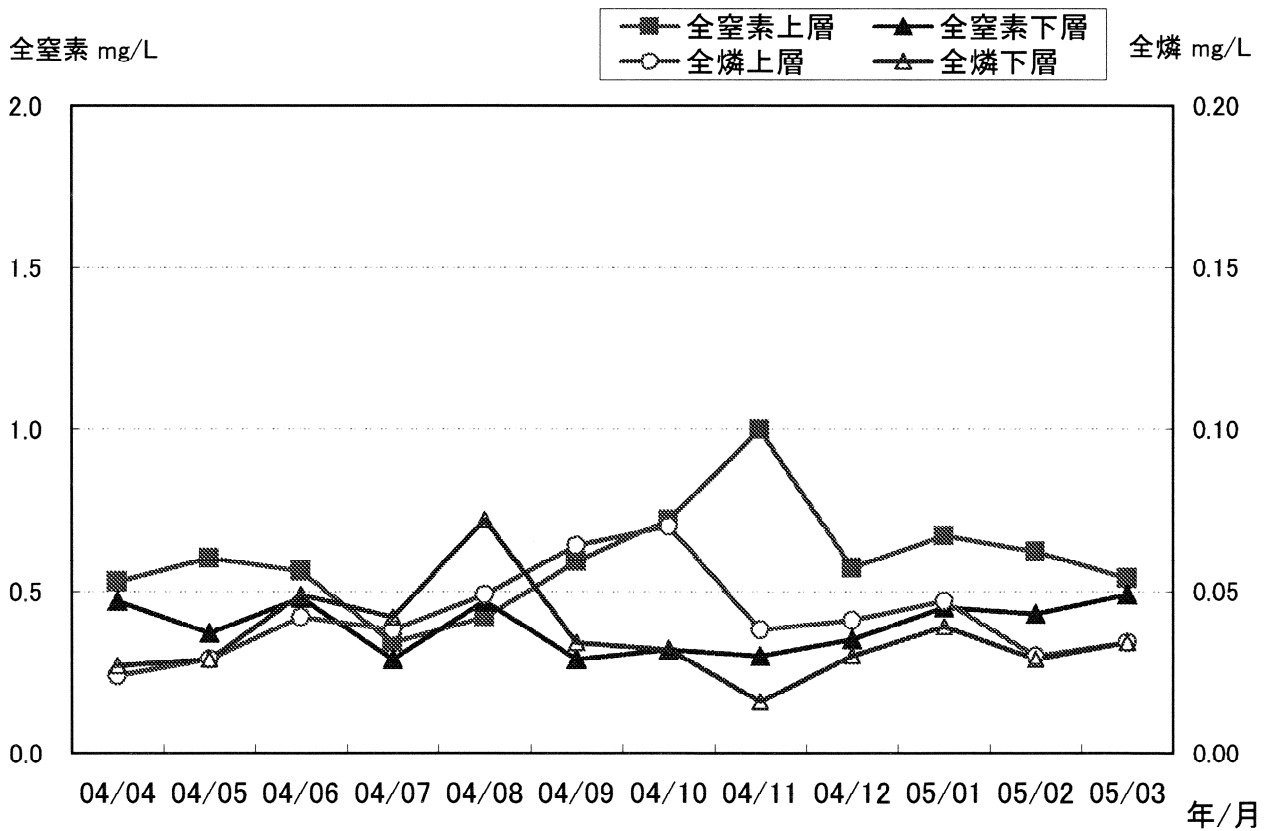
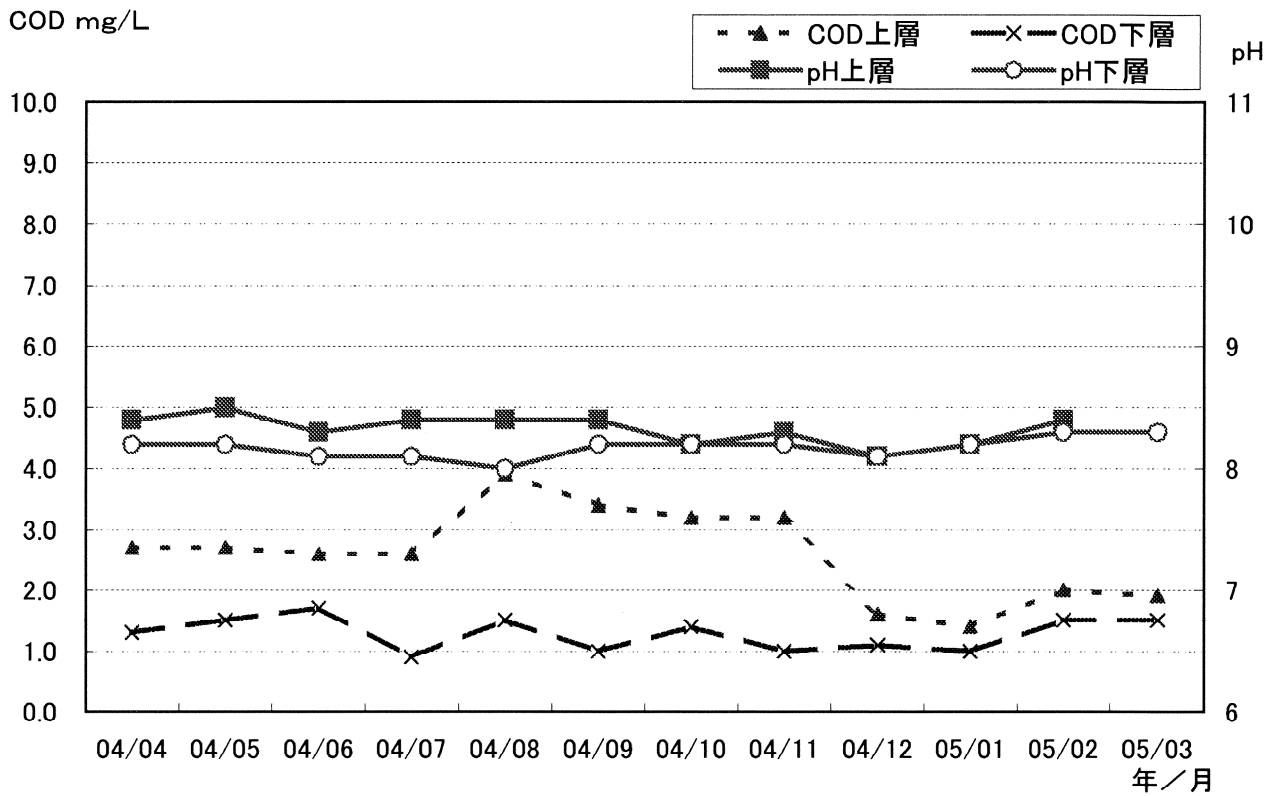


図12-6 浦賀沖

