

5 公共用水域の水質汚濁状況図

(河 川)



図一2 主要河川におけるBOD縦断変化図(年平均値)

図2-1 多摩川におけるBOD縦断変化図

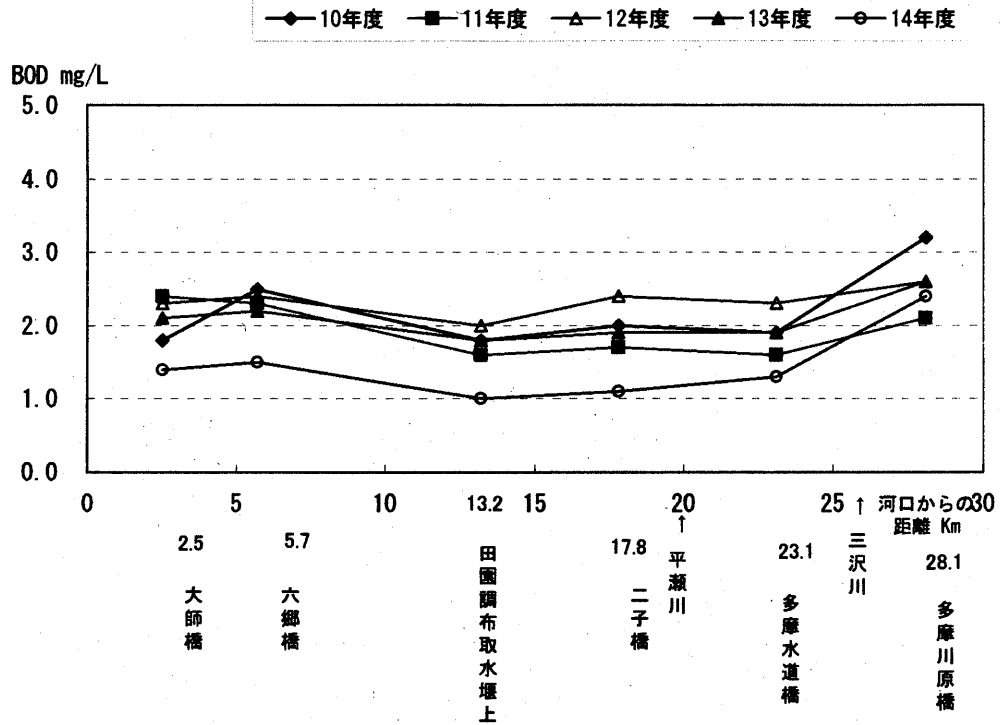


図2-2 鶴見川におけるBOD縦断変化図

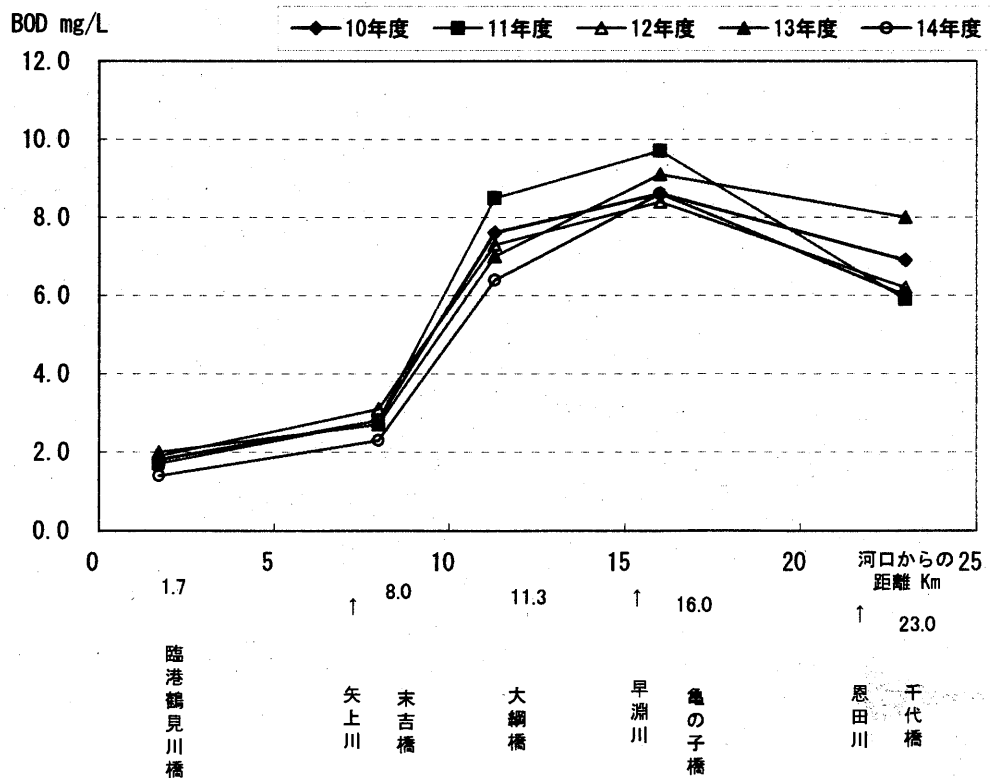


図2-3 境川におけるBOD縦断変化図

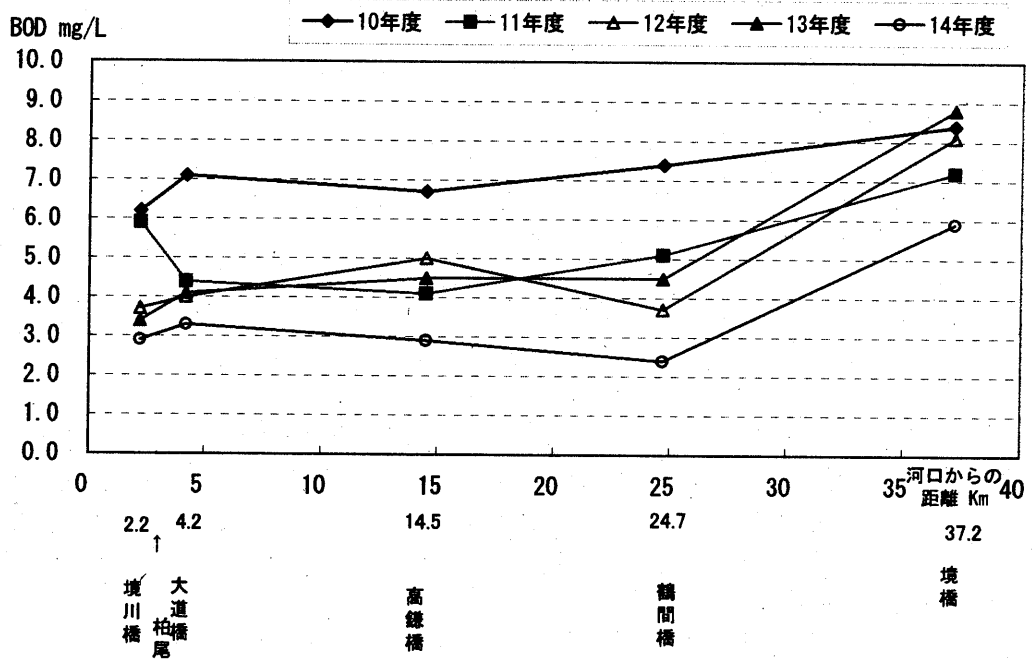


図2-4 相模川におけるBOD縦断変化図

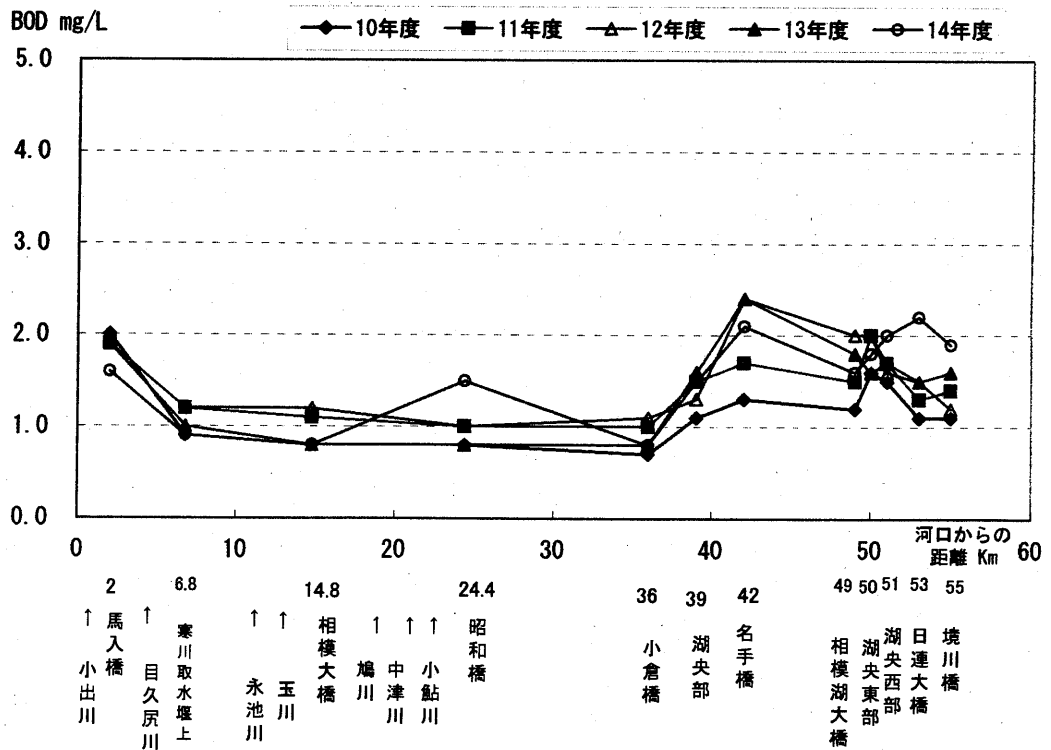


図2-5 酒匂川におけるBOD縦断変化図

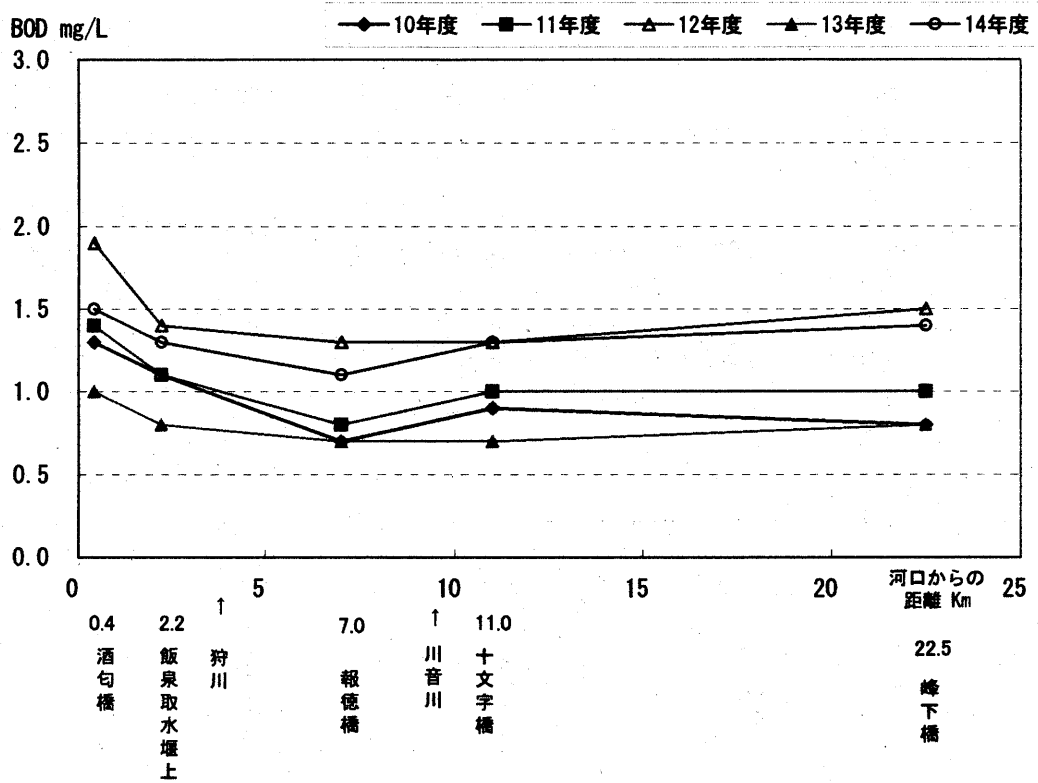


図-3 河川の主要地点における年平均値の推移
(pH・BOD・COD・DO)

図3-1 多摩川(田園調布取水堰上)

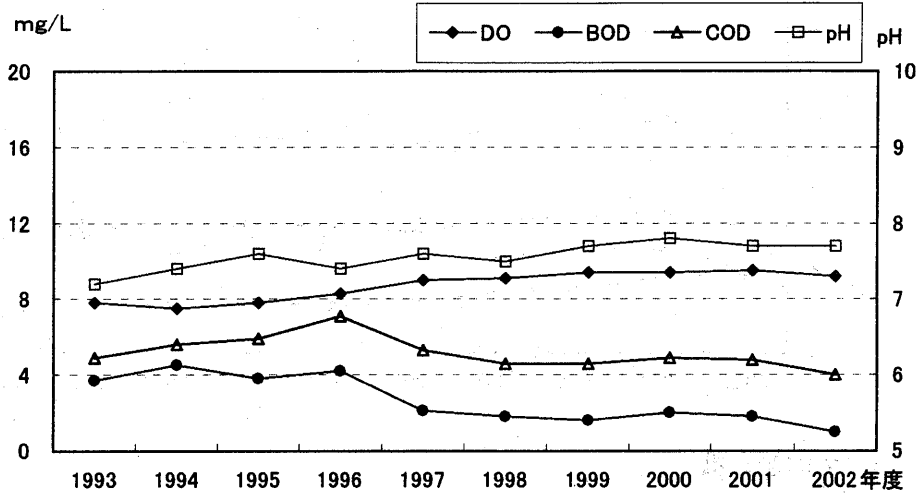


図3-2 鶴見川(大綱橋)

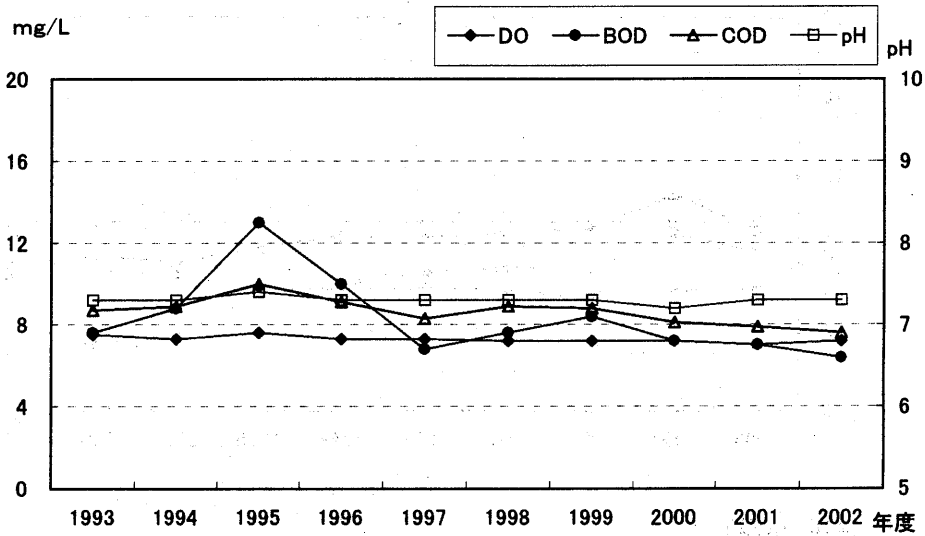


図3-3 大岡川(清水橋)

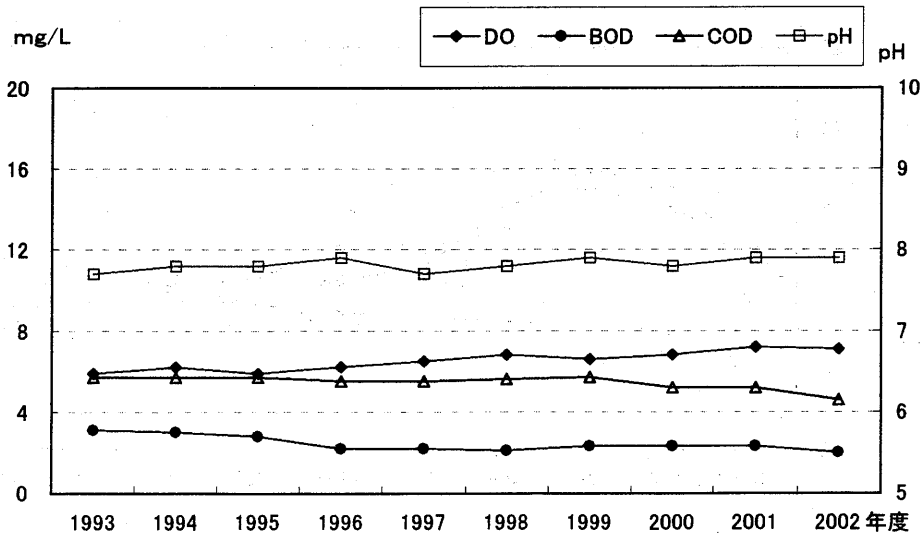


图3-4 平作川(夫婦橋)

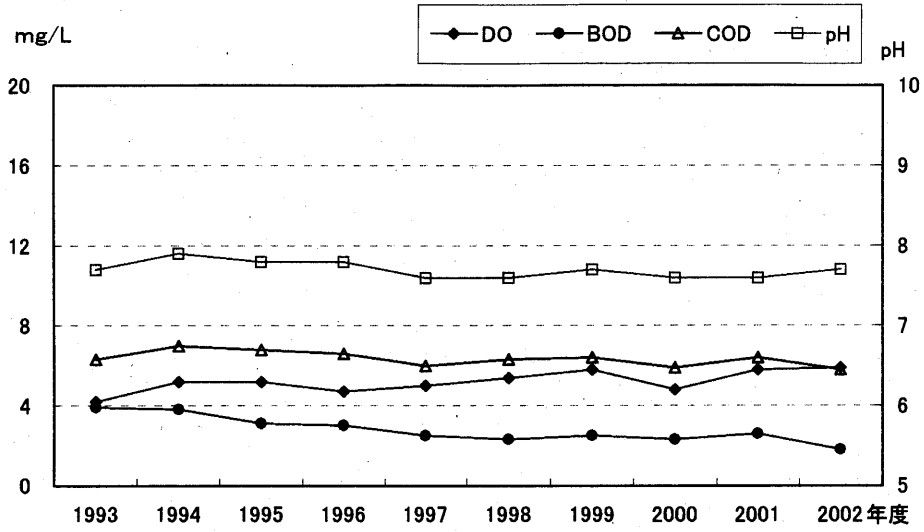


图3-5 境川(境川橋)

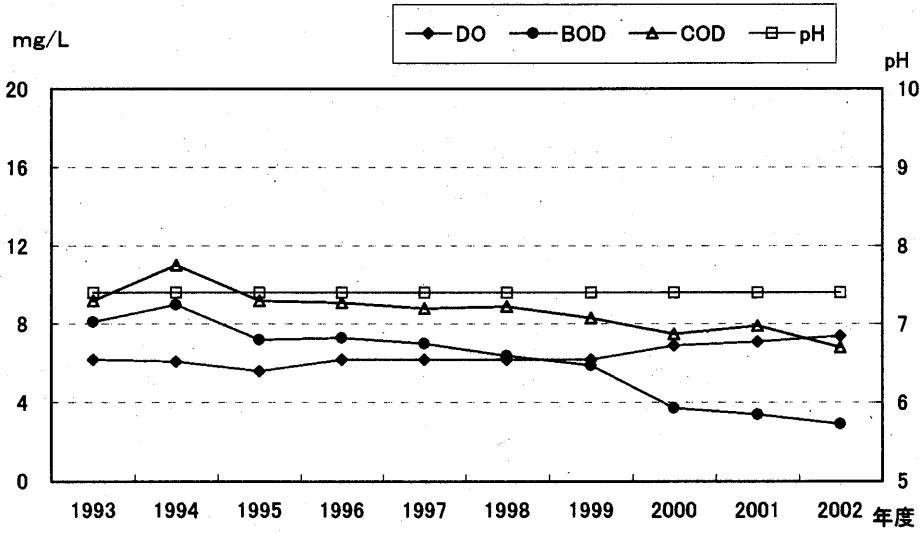


图3-6 境川(境橋)

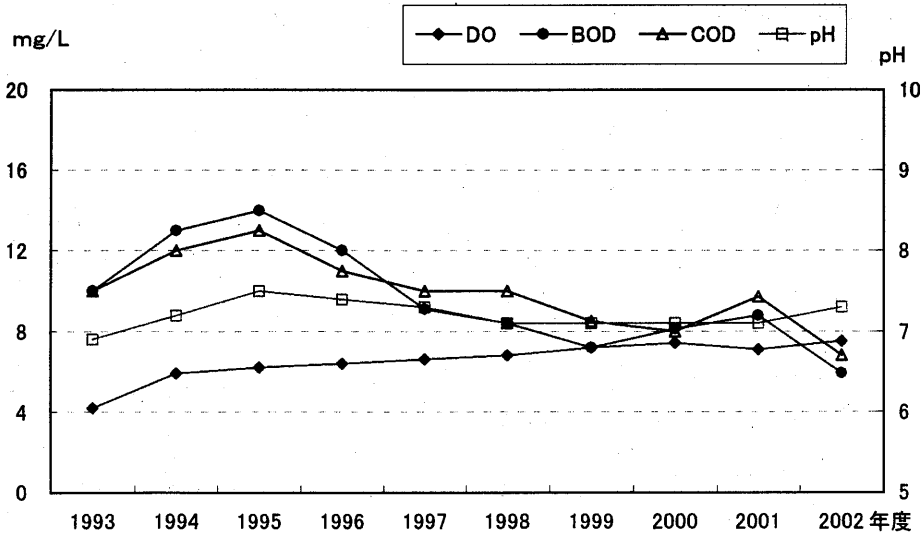


图3-7 相模川(寒川取水堰(上))

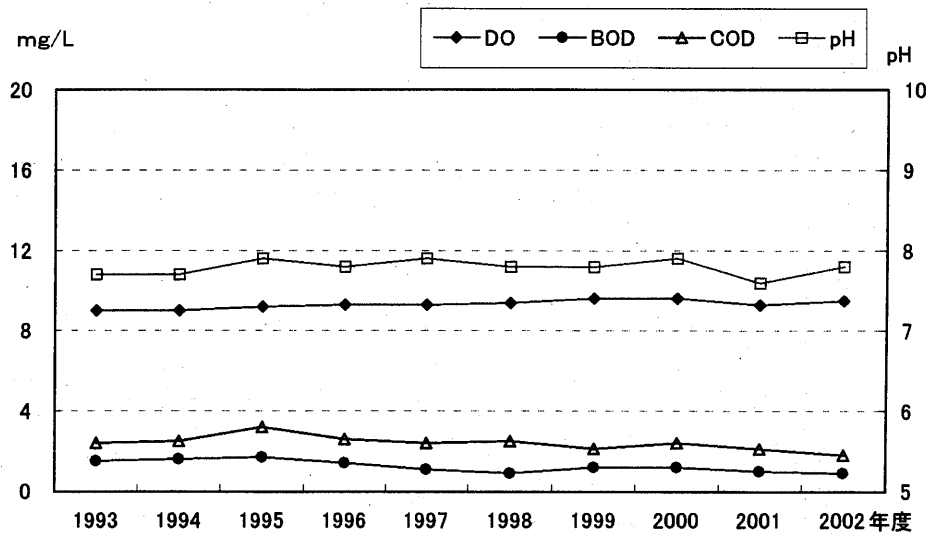


图3-8 金目川(花水橋)

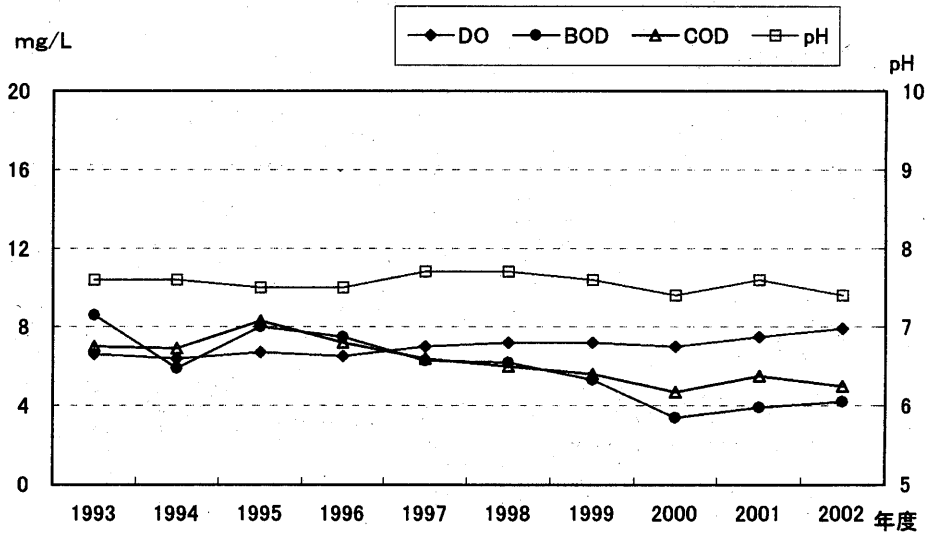


图3-9 酒匂川(飯泉取水堰(上))

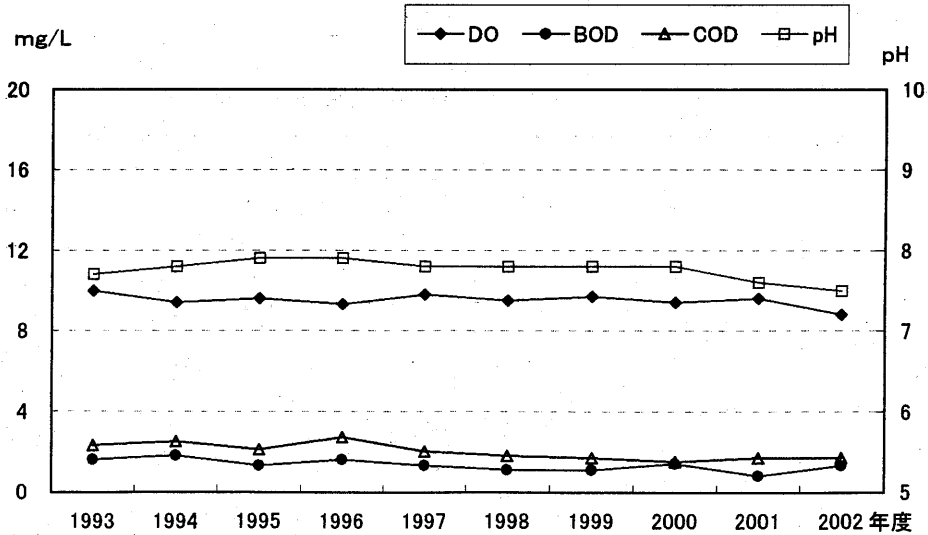


図-4 河川の主要地点における月別推移
(pH・BOD・COD・DO)

図4-1 多摩川(田園調布取水堰上)

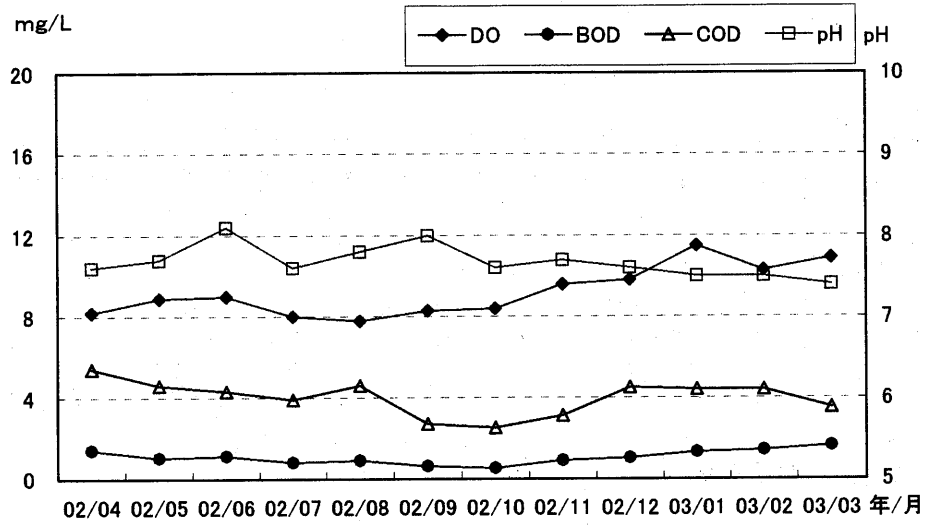


図4-2 鶴見川(大綱橋)

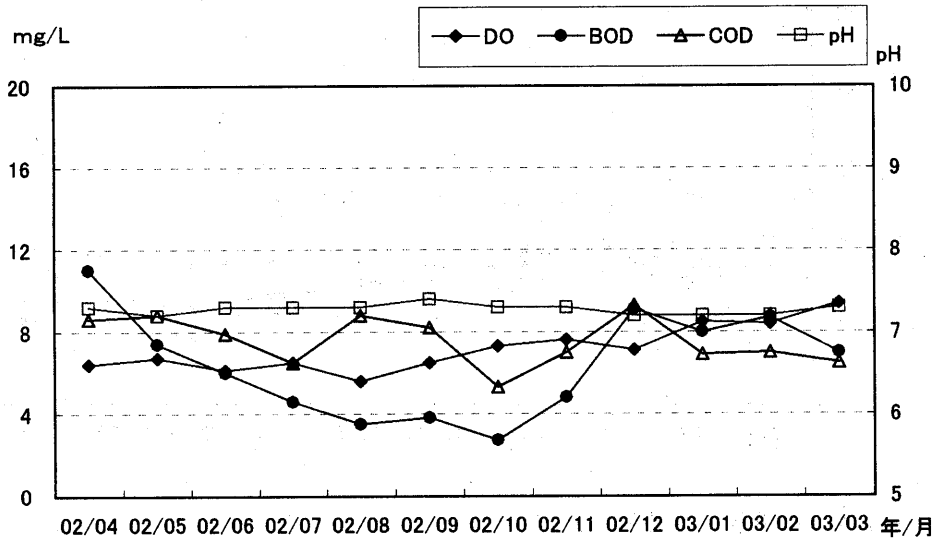


図4-3 大岡川(清水橋)

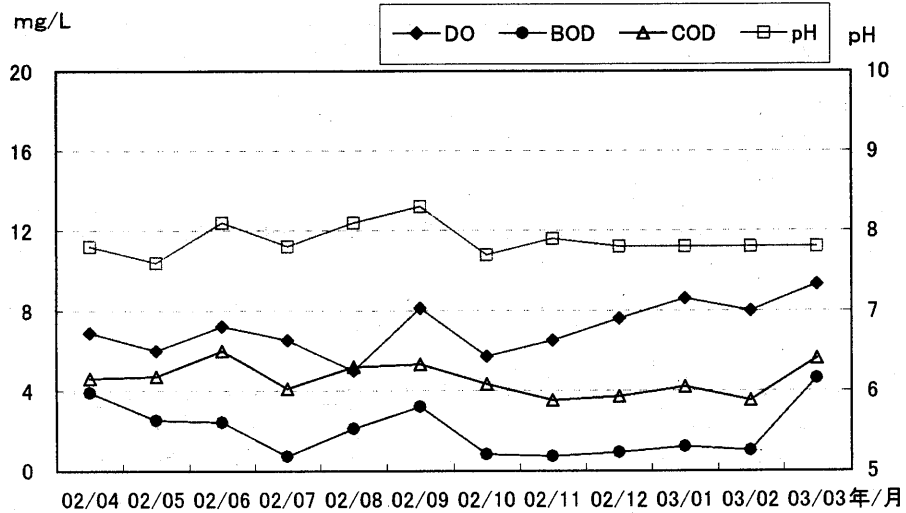


图4-4 平作川(夫婦橋)

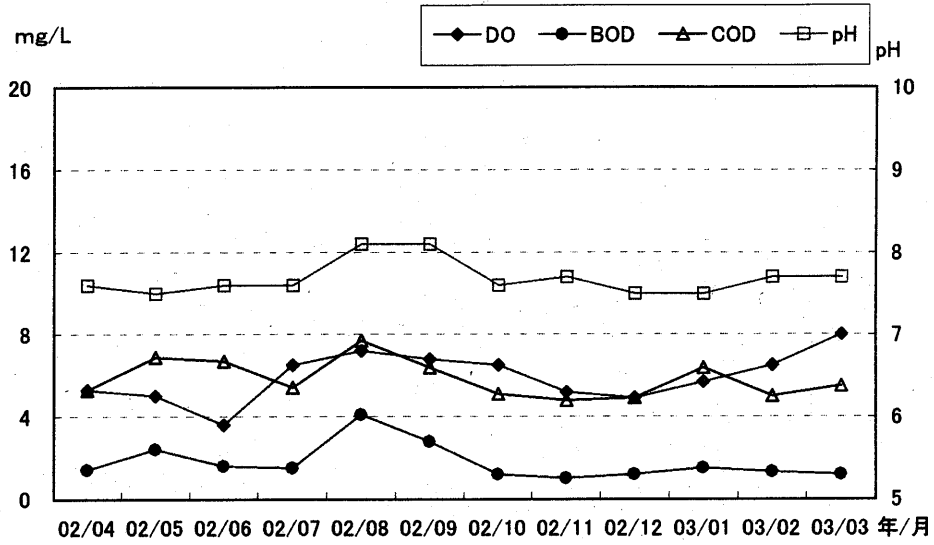


图4-5 境川(境川橋)

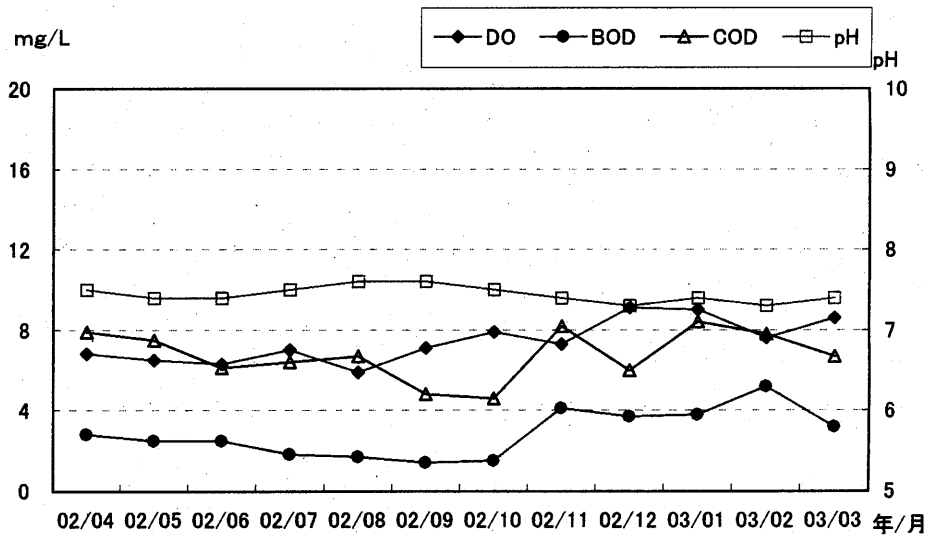


图4-6 境川(境橋)

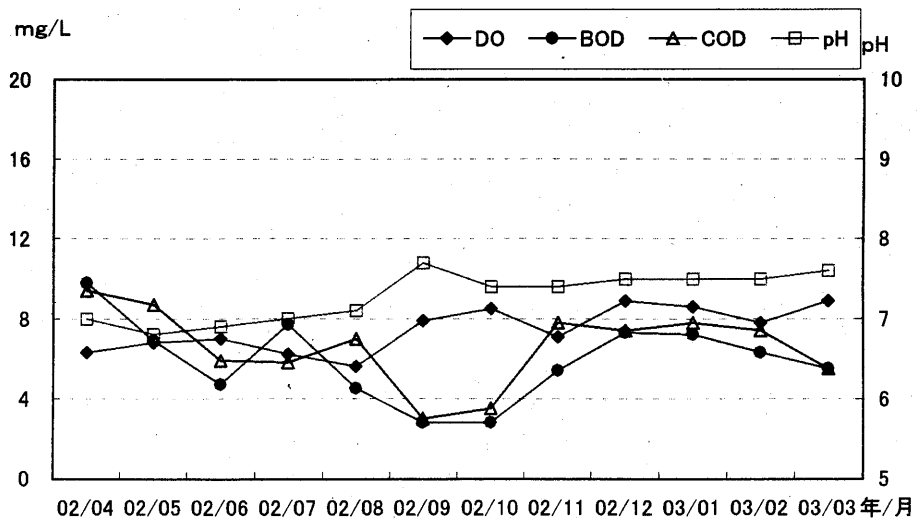


図4-7 相模川(寒川取水堰(上))

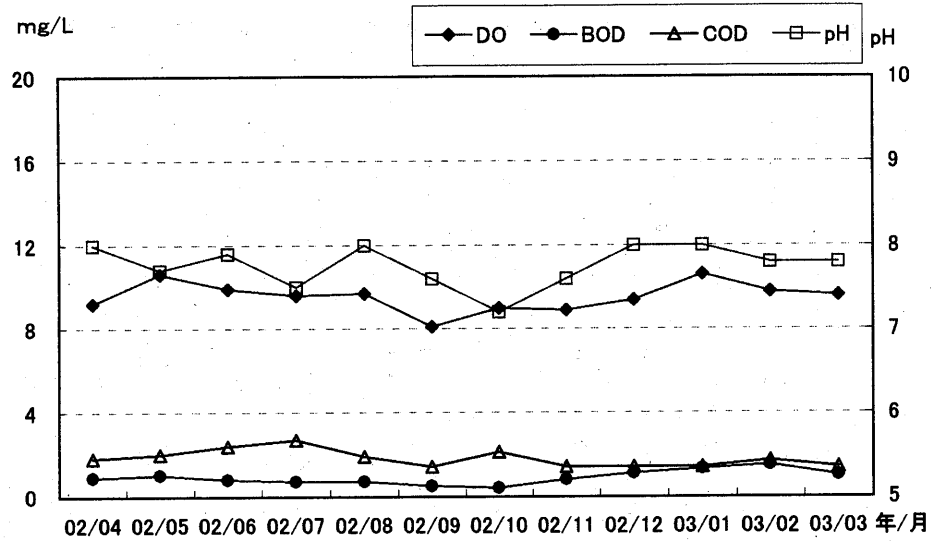


図4-8 金目川(花水橋)

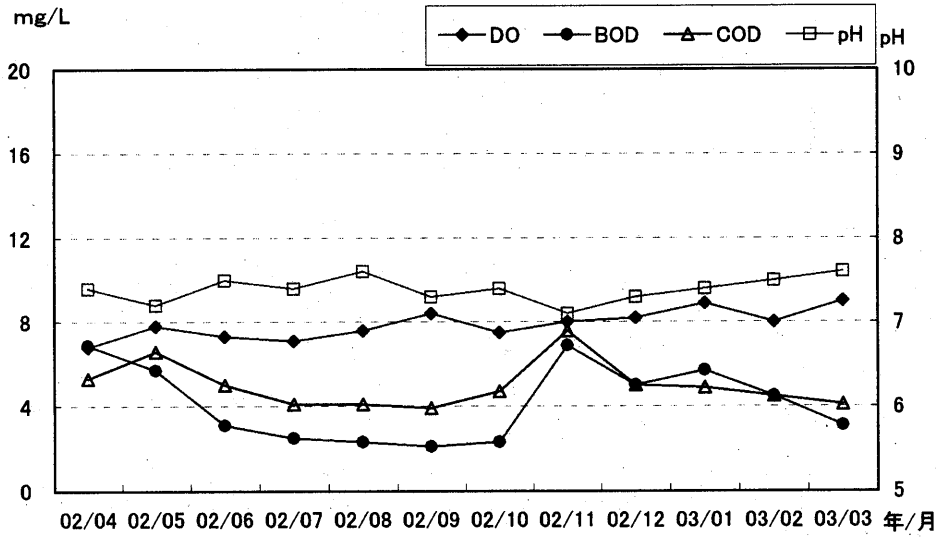


図4-9 酒匂川(飯泉取水堰(上))

