

Cycling Rulebook

Kanagawa Bicycle
Ordinance

Get bicycle liability insurance!

Enforcement of
the revised Road Traffic Law
From April 1, 2023

Endeavor to
wear a helmet!

Five Rules for Riding a Bicycle Safely

1. In principle, cycle on the left side of the road
Sidewalks are to be used as an exception and
you must give way to pedestrians
2. At crossings, make sure to obey the traffic lights,
come to a complete stop, and check it is safe
3. Use a light when cycling at night time
4. No drunk cycling
5. Wear a helmet

From April 1, 2023, all cyclists are required to make an effort to wear a helmet

In Japan,
cyclists travel
on the left
Check it is safe
by looking right
first



Kanagawa Prefecture's PR mascot:
Kanagawa Kintaro



**Kanagawa Prefectural Government
& Kanagawa Prefecture Police Force**

In Kanagawa Prefecture, due to factors such as the increase in the number and severity of traffic accidents involving pedestrians caused by cyclists and cases of large damage pay-outs to victims of cycling accidents all over Japan, to realize a community where pedestrians, cyclists, and automobile drivers can travel safely and live with peace of mind, Kanagawa Prefecture is taking the following efforts to quickly provide relief to victims, reduce the financial burden on perpetrators, and ensure safe cycling: (1) Making it an obligation to have bicycle liability insurance, (2) carrying out initiatives to ensure safe cycling, and (3) establishing/enforcing an ordinance centered on the implementation of traffic safety education.

For details

[Kanagawa Bicycle Ordinance](#)



1. Cyclists must have bicycle liability insurance

[Enforced in October 2019]

Case study of large damage pay-outs for bicycle accidents

About **¥95 million**

An elementary school student crashed head into a female pedestrian while cycling home. The woman lost consciousness as a result of a skull fracture, etc., and the elementary school student's mother, who was liable as the child's guardian, was ordered to pay damages.

Q1

Who must have bicycle liability insurance?

In addition to adult cyclists, those who must also have bicycle liability insurance are guardians in the case of child cyclists, and business operators and bicycle rental business operators in the case of commercial-use bicycles.

Q2

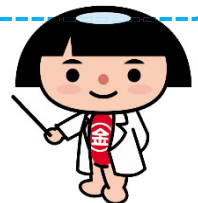
What is obligatory bicycle liability insurance?

In the Kanagawa Bicycle Ordinance, bicycle liability insurance is defined as "Insurance or mutual aid that can compensate for damage in the event that you inflict fatal or bodily harm on someone else due to an accident caused by the use of a bicycle." It is not insurance to cover your own life or health. E.g. Cycling insurance, automobile insurance and fire insurance policy, PTA insurance and group insurance in each line of work, TS Mark insurance, etc.

Types of bicycle insurance, etc.

Covers Type	Other People		Yourself
	Life and health	Property (objects)	Life and health
Personal liability insurance	○	○	×
Accident insurance	×	×	○

There are various types of insurance. You may even have insurance without realizing it. Check ASAP with the "Sheet to Check If You Have Bicycle Liability Insurance" on the back cover!



Q3

Where can I get bicycle liability insurance?

For personal liability insurance and mutual aid, inquire at an insurance agency, and for TS Mark insurance, inquire at a bicycle safety maintenance shop.

***TS Mark insurance**

Insurance granted to bicycles that are confirmed to be safe by a bicycle safety maintenance mechanic after being subject to a paid inspection or maintenance.

Q4

Do cyclists traveling from outside Kanagawa Prefecture also need to have insurance? What about rental bicycles?

The Kanagawa Bicycle Ordinance applies to all cyclists when cycling in Kanagawa Prefecture. You need to have insurance. The same goes for rental bicycles.

2. Efforts to ensure safe cycling

[Enforced in April 2019]

(1) Install reflectors on your bicycle



(2) Take crime-prevention measures such as using a lock



(3) Inspect and maintain



3. Implementation of traffic safety education

[Enforced in April 2019]

- The wearing of helmets and so on by infants, children, and the elderly
- Traffic safety education at schools and in the home



Enforcement Bylaws of the Road Traffic Law in

[Violations result in a maximum fine of ¥50,000]

Do not use your smartphone or cell phone



Do not wear earphones



Do not cycle while holding an umbrella



Five Rules for Riding a Bicycle Safely

1. In principle, cycle on the left side of the road. Sidewalks are to be used as an exception and you must give way to pedestrians.

(1) In principle, cycle on the left side of the road

[Penalty: A maximum of 3 months imprisonment or a maximum fine of ¥50,000]

Bicycles are a mode of transport, just like a car. On roads that are separate from sidewalks, cyclists must, in principle, cycle on the road. If there are bicycle lanes or traffic lanes exclusive to standard bicycles, cyclists must use them.

(2) Sidewalks are to be used as an exception and you must give way to pedestrians (if you can travel on the sidewalk)

[Penalty: A maximum fine of ¥20,000 or a petty fine]

Only when cyclists can travel slowly (a speed at which they can stop immediately) on the part of the sidewalk near the road. If a cyclist gets in the way of a pedestrian, the cyclist must come to a complete stop and give way to the pedestrian.

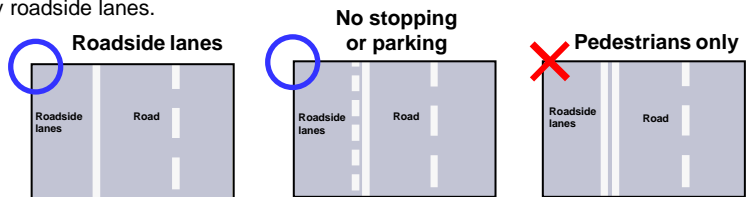


- (1) If there are road signs, etc. on the right.
- (2) If children under the age of 13, seniors 70 years old or over, or people with disabilities are driving.
- (3) If it is difficult to cycle on the left side of the road and deemed unavoidable to ensure safety.

◆ Traveling on roadside lanes

[Penalty: A maximum of 3 months imprisonment or a maximum fine of ¥50,000]

Cyclists can cycle only in roadside lanes established on the left side of the road. Cyclists cannot travel on pedestrian-only roadside lanes.



2. At crossings, make sure to obey the traffic lights, come to a complete stop, and check it is safe

(1) Obey the traffic lights and check it is safe

[Penalties: A maximum of 3 months imprisonment or a maximum fine of ¥50,000]



If there are traffic lights for pedestrians and cyclists only or if cycling on a pedestrian crossing, obey the pedestrian lights.

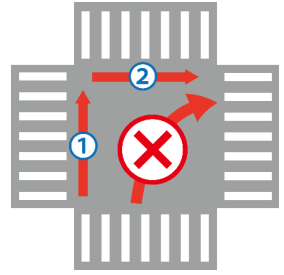


Signal lights to be obeyed by cyclists

- **Cycling on the road:** traffic lights
- **Designated lanes for bicycles or when pushing your bicycle across a pedestrian crossing:** pedestrian lights
- **Locations with pedestrian-and-cyclist-only lights:** pedestrian-and-cyclist-only lights

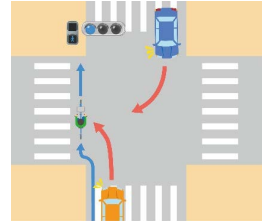
◆ When turning right, always perform a hook turn

When turning right at an intersection with lights, perform a hook turn (right figure: ① proceed to the other side of the intersection at the green light and turn right, then ② proceed when the light in front turns green). Cyclists cannot turn right at the light of the right-turn arrow. If there are designated lanes for bicycles, cyclists must use them. In the case of pedestrian crossings, if there is a possibility of getting in the way of crossing pedestrians, cyclists must get off their bicycle and push it across the crossing.



◆ Properly check it is safe even at green lights!

At intersections, even if the light is green, be cautious of vehicles turning left or right. You need to be careful of vehicle blind spots.



(2) Come to a complete stop and check it is safe

[Penalty: A maximum of 3 months imprisonment or a maximum fine of ¥50,000]

◆ Crossings with road signs/markings

Cyclists must obey road signs and markings too.



◆ Crossings with no road signs/markings

When reaching an intersection during cycling in the opposite direction on a one-way road, when at an intersection with poor visibility, or when exiting a narrow road into a wide road, come to a complete stop and check it is safe.



3. Use a light when cycling at night time

[Penalty: A maximum fine of ¥50,000]

4. No drunk cycling

[Penalty: A maximum of 5 years imprisonment or a maximum fine of ¥1,000,000]

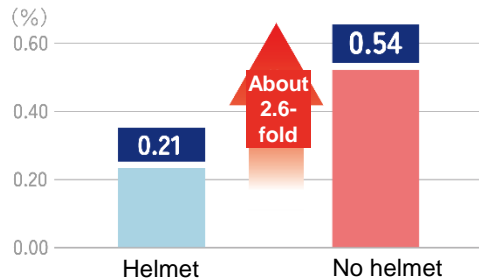
This applies to all cyclists!

5. Wear a helmet

About 60% of cyclists who are killed die as a result of a head injury. Since April 1, 2023, all cyclists must wear a helmet (best-effort obligation).



Comparison of fatality rate by helmet or no helmet (2022)
According to National Police Agency materials



*The fatality rate is the percentage of casualties who are killed.

Understand Safety and Ride Safely!

▶ Power-assisted bicycles

- Be careful of sudden acceleration and your traveling speed!
- Pedaling while standing up is dangerous!
- Placing both feet on the ground and holding the brake firmly are basic principles when waiting for lights to change, etc.



▶ Parent and child bicycles

- You can ride with up to 2 infants under elementary school age
- Be careful of accidents caused by the bicycle tipping over when stationary. Keep your hands on the bicycle at all times when a child is seated on the bicycle.
- Seat the smallest child on the front seat and the largest child on the rear seat. Order when placing children on the bicycle: place from rear seat to front seat / Order when taking children off the bicycle: front seat to rear seat

Correct way to ride (example)



Dangerous way to ride (example)



Signs and Markings for Cyclists (From July 1, 2023)



Road closed



Road closed to vehicles



Road closed to vehicles (combination)



No entry for vehicles



Road closed to specified small motorized bicycles and bicycles



Locations where cyclists must come to a complete stop

Roads that cyclists cannot cycle on



Motor vehicles only



Pedestrians and so forth only



Specified small motorized bicycles and bicycles only

Roads that cyclists can cycle on



Standard bicycles and pedestrians and so forth only

Roads where cyclists can only cycle in the direction of the arrow



One way for bicycles



One way for specified small motorized bicycles and bicycles

Locations where cyclists must slow down



Sidewalks that exceptional specified small motorized bicycles can travel on



Sidewalks that exceptional specified small motorized bicycles and standard bicycles can travel on



The part of sidewalks for exceptional specified small motorized bicycles and standard bicycles to travel on

Lane in which standard bicycles must cycle in



Traffic lanes exclusive to standard bicycles

Marking that indicates an intersection where cyclists cannot enter



Prohibits standard bicycles from entering the intersection

Specified Small Motorized Bicycles (also known as electric scooters, etc.)



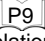
Electric scooters (specified small motorized bicycles) are a new category of vehicle. If an electric scooter does not comply with the criteria, it will be deemed a motorcycle or the like and the rules of specified small motorized bicycles will not apply. The road rules for electric scooters are similar to that of a standard bicycle, but there are differences, so make sure to check the rules first before properly riding an electric scooter.

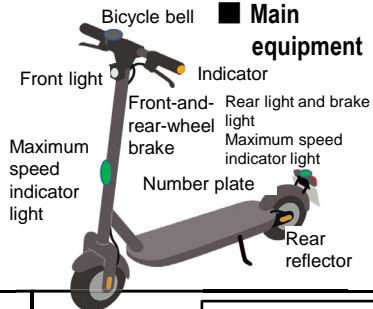
■ Main traffic rules

- The locations in which you can travel differ according to the driving mode. On sidewalks, you must give way to pedestrians. Vehicles that do not meet the exceptional specified small motorized bicycle criteria are not allowed to travel on sidewalks.

	Road mode	Sidewalk mode
Road	○	/
Sidewalk	×	○*
Roadside lanes	×	○*
Bicycle paths or traffic lanes exclusive to standard bicycles	○	/

*Excluding cases where standard bicycles are not allowed

- At intersections with traffic lights, perform a hook turn. In principle, the lights that you must obey are the traffic lights. → 
- Always follow the stop sign and check it is safe all around you. → 
- Try to wear a helmet in the unlikely event that an accident occurs. → 
- Individuals who violate the Road Traffic Law are required to pay violation fines, and those who repeatedly commit dangerous acts are ordered to take the Specified Small Motorized Bicycle Driver Course.



	Specified small motorized bicycles (road mode)	Exceptional specified small motorized bicycles (sidewalk mode)
Size	60 cm or less (width) × 190 cm or less (length)	
Rated output	0.60 kW or less	
Maximum speed	20 km/h or less (lights green)	6 km/h or less (flashes green)
Number plate	Required	
Mandatory vehicle liability insurance	Required	
Driving license	Not required (individuals younger than 16 years old are not allowed to drive)	
Helmet	Best-effort obligation	

Performance confirmation sticker



性能等確認済
認定機関名称・認定番号
特定原付
【車名・型式】

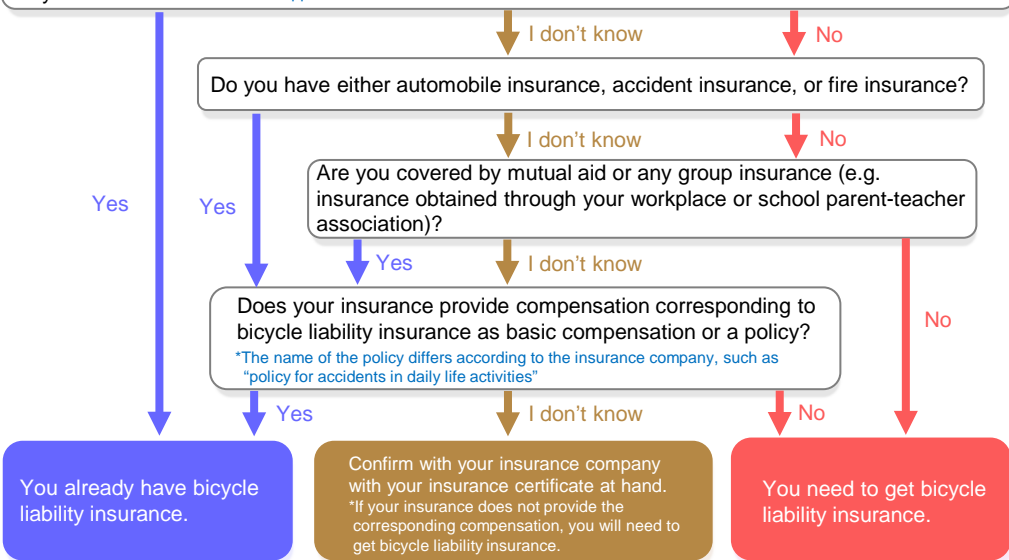


性能等確認済
認定機関名称・認定番号
特定原付
【車名・型式】












Sheet to Check If You Have Bicycle Liability Insurance

Are you covered by an insurance policy (bicycle liability insurance, etc.) that can compensate for damage in the event that you inflict fatal or bodily harm on someone else in an accident when riding a bicycle? **TS Mark insurance also applies*



■ Types of liability insurance for daily life activities

Bicycle insurance 	Automobile insurance policy 	Fire insurance policy 
Accident insurance policy 	Organization insurance such as for companies 	Parent-teachers association insurance 
Mutual aid 	TS Mark insurance 	Credit card insurance 

■ Types of commercial liability insurance (for business operators)

- **Premises liability insurance:** insurance for accidents during business activities
- **TS Mark insurance:** insurance covering the body of the bicycle